

## ARG30042 Phospho IRS1 (pS307) / Phospho PKC theta (pS695) Antibody Duo

Package: 1 pair  
Store at: -20°C

### Component

Cat. No.	Component Name	Host clonality	Reactivity	Application	Package
ARG51725	anti-IRS1 phospho (Ser307) antibody	Rabbit pAb	Hu, Ms, Rat	IHC-P	50 µl
ARG51669	anti-PKC theta phospho (Ser695) antibody	Rabbit pAb	Hu, Ms, Rat	IHC-P, WB	50 µl

### Summary

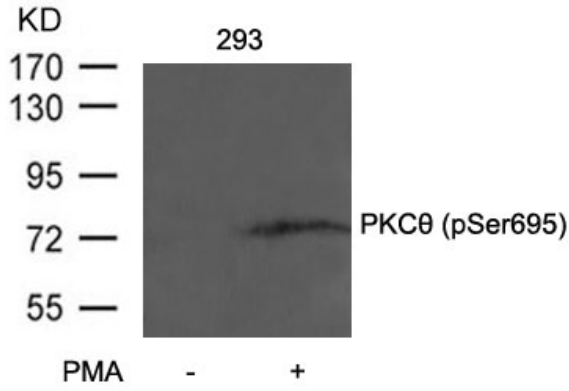
<b>Product Description</b>	Insulin receptor substrate 1 (IRS-1) is a signalling adapter protein that is phosphorylated by insulin receptor tyrosine kinase. Mutations in IRS-1 are associated with type II diabetes and susceptibility to insulin resistance. IRS-1 plays a key role in transmitting signals from the insulin and insulin-like growth factor-1 (IGF-1) receptors to PI3K / Akt and Erk MAP kinase pathways. IRS-1 also plays important biological function for both metabolic and mitogenic pathways. IRS-1 could be phosphorylated by p70S6K, a downstream protein of Akt, at Ser-307, Ser-636, and Ser-1101 to insulin sensitivity. In addition, IRS-1 is also potentially phosphorylated by the PKC $\theta$ kinase at Ser307. ARG30040, ARG30041 and ARG30042 IRS-1 phospho-Duos, containing antibodies recognize total IRS-1 and phosphorylated IRS-1 at Ser307 or Ser636, and PKC theta (pS695). These Duos are designed for the IRS-1 related studies; insulin related signaling and IRS-1 regulation study.
<b>Target Name</b>	IRS1 / PKC theta
<b>Alternate Names</b>	Phospho IRS1 (pS307) / Phospho PKC theta (pS695) antibody; Phospho Insulin receptor substrate 1 (pS307) / Phospho PKC theta (pS695) antibody; PKC theta phospho (Ser695) antibody; IRS1 phospho (Ser307) antibody

### Properties

<b>Storage instruction</b>	For continuous use, store undiluted antibody at 2-8°C for up to a week. For long-term storage, aliquot and store at -20°C or below. Storage in frost free freezers is not recommended. Avoid repeated freeze/thaw cycles. Suggest spin the vial prior to opening. The antibody solution should be gently mixed before use.
<b>Note</b>	For laboratory research only, not for drug, diagnostic or other use.

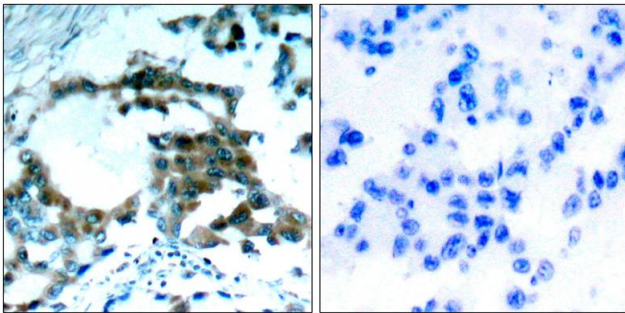
### Bioinformation

<b>Gene Full Name</b>	Phospho Insulin receptor substrate 1 (IRS1) (pS307) / Phospho PKC theta (pS695) Antibody Duo
<b>Highlight</b>	Related Product: <a href="#">anti-IRS1 phospho (Ser307) antibody</a> ;
<b>Research Area</b>	Cancer antibody; Cell Biology and Cellular Response antibody; Controls and Markers antibody; Gene Regulation antibody; Immune System antibody; Metabolism antibody; Neuroscience antibody; Signaling Transduction antibody



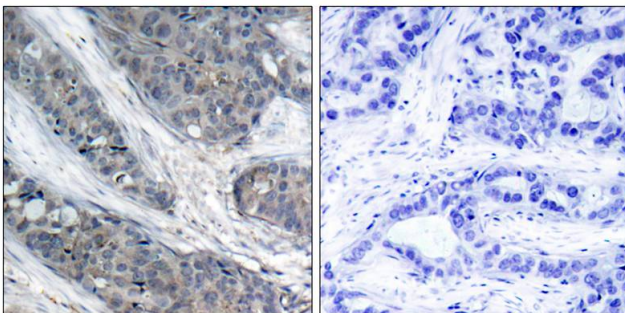
ARG51669 anti-PKC theta phospho (Ser695) antibody WB image

Western Blot: extracts from 293 cells untreated or treated with PMA stained with anti-PKC theta (phospho Ser695) antibody ARG51669.



ARG51669 anti-PKC theta phospho (Ser695) antibody IHC-P image

Immunohistochemistry: paraffin-embedded human lung carcinoma tissue stained with anti-PKC theta (phospho Ser695) antibody ARG51669 (left) or the same antibody preincubated with blocking peptide (right).



ARG51725 anti-IRS-1 phospho (Ser307) antibody IHC-P image

Immunohistochemistry: paraffin-embedded human breast carcinoma tissue, stained with anti-IRS-1 (phospho Ser307) antibody ARG51725).