

ARG30052 Phospho mTOR Antibody Duo (Total, pS2448)

Package: 1 pair
Store at: -20°C

Component

Cat. No.	Component Name	Host clonality	Reactivity	Application	Package
ARG54675	anti-mTOR antibody	Rabbit pAb	Hu, Ms	ELISA, ICC/IF, WB	25 µg
ARG51712	anti-mTOR phospho (Ser2448) antibody	Rabbit pAb	Hu, Ms, Rat	ICC/IF, IHC-P, WB	50 µl

Summary

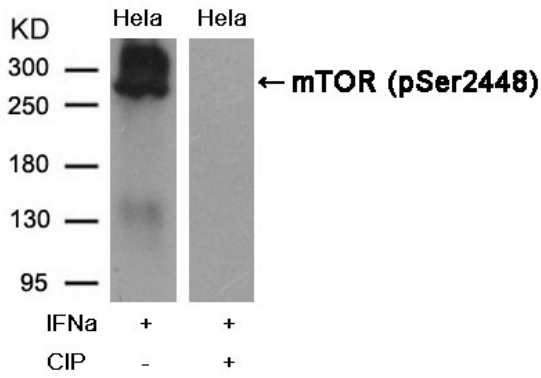
Product Description	<p>The mammalian target of rapamycin (mTOR) regulates cell growth with the growth factor and nutrient status of the cell. mTOR is a direct substrate for the AKT kinase that phosphorylates mTOR at Ser-2448. Later it was found that the phosphorylation of mTOR at Ser-2448 also requires autophosphorylation at Ser-2481.</p> <p>mTOR phospho duo allows scientists to study the function of mTOR in the cell proliferation and homeostasis abnormality in tumor cells. The control of mTOR pSer-2448 phosphorylation by insulin might give more insight into the potential of mTOR as a target for cancer therapy.</p>
Target Name	mTOR
Alternate Names	Phospho mTOR antibody; Phospho mechanistic target of rapamycin antibody; mTOR phospho (Ser2448) antibody; mTOR antibody

Properties

Storage instruction	For continuous use, store undiluted antibody at 2-8°C for up to a week. For long-term storage, aliquot and store at -20°C or below. Storage in frost free freezers is not recommended. Avoid repeated freeze/thaw cycles. Suggest spin the vial prior to opening. The antibody solution should be gently mixed before use.
Note	For laboratory research only, not for drug, diagnostic or other use.

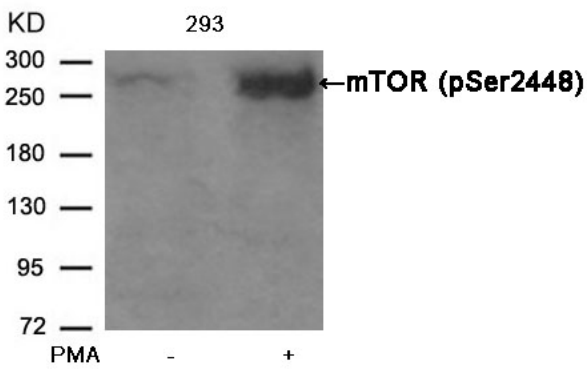
Bioinformation

Gene Full Name	Phospho mechanistic target of rapamycin (mTOR) Antibody Duo (Total, pS2448)
Highlight	Related Product: anti-mTOR antibody; anti-mTOR phospho (Ser2448) antibody;
Research Area	Cancer antibody; Cell Biology and Cellular Response antibody; Gene Regulation antibody; Metabolism antibody



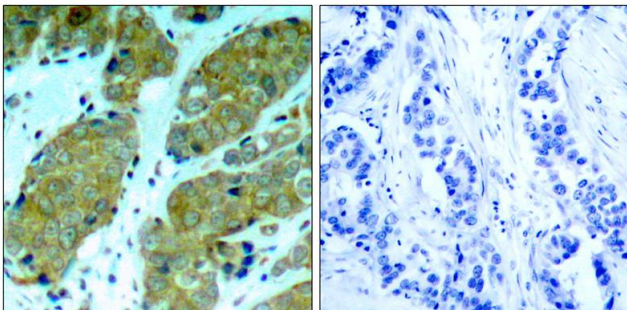
ARG51712 anti-mTOR phospho (Ser2448) antibody WB image

Western Blot: extracts from HeLa cells, treated with IFNa or calf intestinal phosphatase (CIP), stained with anti-mTOR (phospho Ser2448) antibody ARG51712.



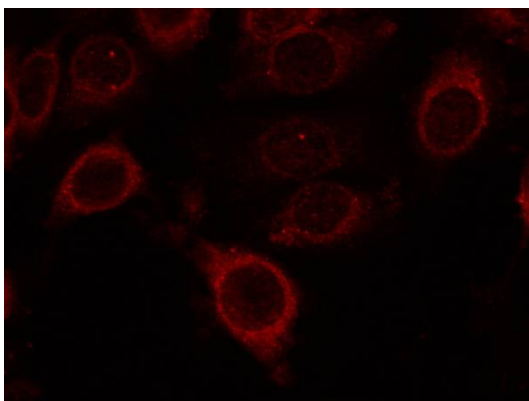
ARG51712 anti-mTOR phospho (Ser2448) antibody WB image

Western Blot: extracts from 293 cells untreated or treated with PMA stained with anti-mTOR (phospho Ser2448) antibody ARG51712.



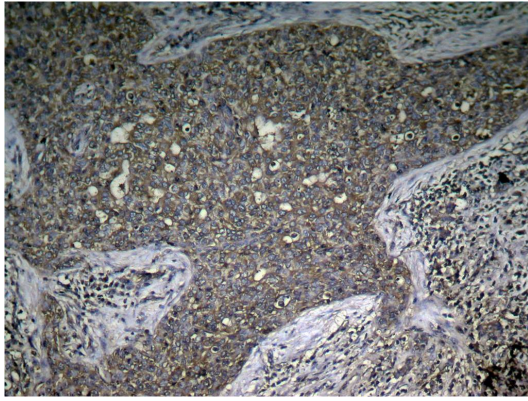
ARG51712 anti-mTOR phospho (Ser2448) antibody IHC-P image

Immunohistochemistry: paraffin-embedded human breast carcinoma tissue stained with anti-mTOR (phospho Ser2448) antibody ARG51712 (left) or the same antibody preincubated with blocking peptide (right).



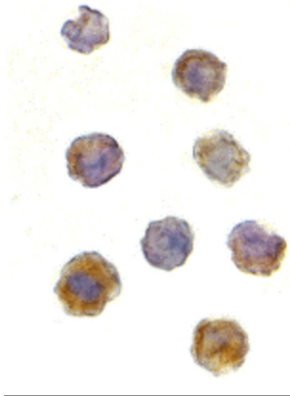
ARG51712 anti-mTOR phospho (Ser2448) antibody ICC/IF image

Immunofluorescence: methanol-fixed MCF cells stained with anti-mTOR (phospho Ser2448) antibody ARG51712.



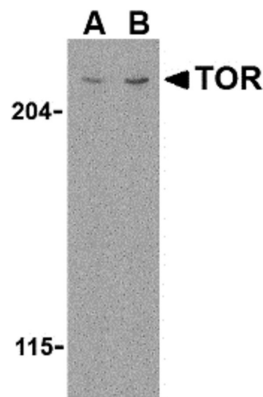
ARG51712 anti-mTOR phospho (Ser2448) antibody IHC-P image

Immunohistochemistry: paraffin-embedded human breast carcinoma tissue stained with ARG51712 anti-mTOR (phospho Ser2448) antibody.



ARG54675 anti-mTOR antibody ICC/IF image

Immunocytochemistry: L1210 cells stained with ARG54675 anti-mTOR antibody at 2 $\mu\text{g/ml}$.



ARG54675 anti-mTOR antibody WB image

Western blot: L1210 cell lysate stained with ARG54675 anti-mTOR antibody at (A) 1 and (B) 2 $\mu\text{g/ml}$.