

ARG30065 Alpha Fetoprotein ELISA Antibody Duo

Package: 1 pair
Store at: -20°C

Component

Cat. No.	Component Name	Host clonality	Reactivity	Application	Package
ARG10186	anti-alpha Fetoprotein antibody [AFP-Y1]	Mouse mAb	Hu	ELISA, WB	100 µg
ARG10187	anti-alpha Fetoprotein antibody [AFP-Y2] (HRP)	Mouse mAb	Hu	ELISA	100 µl

Summary

Product Description Alpha fetoprotein (AFP) is a 70kD glycoprotein which is produced primarily by liver cells in foetuses. It exists in significant amount in foetal plasma and decreases rapidly after birth. Moderate amount of AFP exists in serum of pregnant women. Monitoring mother's serum AFP level in second trimester pregnancy can help assessing birth defects such as Down syndrome, neural tube defect and anencephaly. Elevated AFP level in men, children and non-pregnant women is associated with neoplastic conditions in lever, testicle or ovary. ARG30065 Alpha Fetoprotein ELISA Duos, includes a capture antibody, ARG10186 alpha Fetoprotein antibody [AFP-Y1] and a HRP-conjugated tracer antibody, ARG10187 alpha Fetoprotein antibody [AFP-Y2] (HRP), for studying Alpha fetoprotein (AFP) protein expression level by ELISA.

Related news:

[Stem cell and the regenerative medicine: Ready for the patients](#)

Target Name alpha Fetoprotein

Alternate Names Alpha Fetoprotein ELISA antibody; alpha Fetoprotein antibody; HRP-conjugated alpha Fetoprotein antibody

Properties

Storage instruction For continuous use, store undiluted antibody at 2-8°C for up to a week. For long-term storage, aliquot and store at -20°C or below. Storage in frost free freezers is not recommended. Avoid repeated freeze/thaw cycles. Suggest spin the vial prior to opening. The antibody solution should be gently mixed before use.

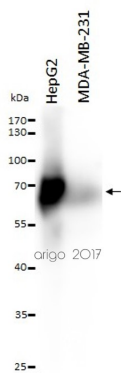
Note For laboratory research only, not for drug, diagnostic or other use.

Bioinformation

Gene Full Name ELISA Antibody Duo for Alpha Fetoprotein

Highlight Related Product:
[anti-alpha Fetoprotein antibody:](#)

Research Area Cancer antibody; Cell Biology and Cellular Response antibody; Developmental Biology antibody



ARG10186 anti-alpha Fetoprotein antibody [AFP-Y1] WB image

Western blot: 20 μ l of HepG2 and MDA-MB-231 cell lysates stained with ARG10186 anti-alpha Fetoprotein antibody [AFP-Y1] at 1:500 dilution.