

ARG30261 Lactate dehydrogenase Antibody Duo (LDHA,LDHB)

Package: 1 pair
Store at: -20°C

Component

Cat. No.	Component Name	Host clonality	Reactivity	Application	Package
ARG55125	anti-Lactate Dehydrogenase B antibody	Rabbit pAb	Hu, Ms, Rat	IHC-P, WB	50 µg

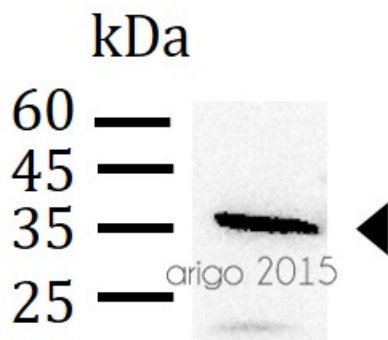
Summary

Product Description	Lactate dehydrogenase (LDH or LD) catalyzes the inter-conversion of lactate to pyruvate as well as NADH to NAD ⁺ during anaerobic glycolysis. The two most common subunits are the LDH-M and LDH-H protein, encoded by the LDHA and LDHB genes respectively. A mutation in one of these genes will lead to a medical condition known as lactate dehydrogenase deficiency. LDHA and LDHB are known to be involved in Warburg Effect signaling pathway in cancer cells. Lunt and Heiden (2011). Annu. Rev. Cell Dev. Biol. (27): 441 Irani et al. (1997) Science 275 (5306):1649
Target Name	Lactate dehydrogenase
Alternate Names	Lactate dehydrogenase antibody; LDH antibody; Lactate Dehydrogenase B antibody; LDHA / Lactate Dehydrogenase antibody

Properties

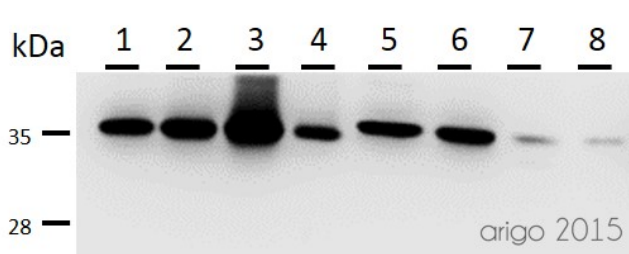
Storage instruction	For continuous use, store undiluted antibody at 2-8°C for up to a week. For long-term storage, aliquot and store at -20°C or below. Storage in frost free freezers is not recommended. Avoid repeated freeze/thaw cycles. Suggest spin the vial prior to opening. The antibody solution should be gently mixed before use.
Note	For laboratory research only, not for drug, diagnostic or other use.

Images



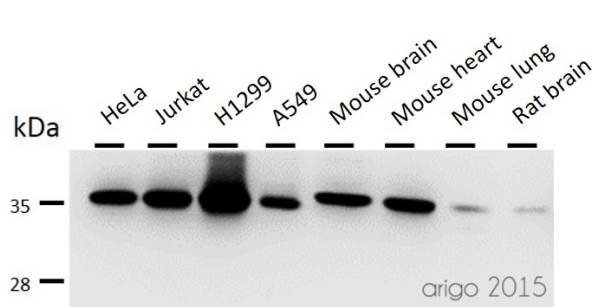
ARG65729 anti-LDHA antibody WB image

Western blot: 30 µg of A498 cell lysate stained with ARG65729 anti-LDHA antibody at 1:500 dilution.



ARG55125 anti-Lactate Dehydrogenase B antibody WB image

Western blot: 30 μ g of 1) HeLa, 2) Jurkat, 3) H1299, 4) A549, 5) Mouse brain, 6) Mouse heart, 7) Mouse lung, and 8) Rat brain lysate stained with ARG55125 anti-Lactate Dehydrogenase B antibody at 1:500 dilution.



ARG55125 anti-Lactate Dehydrogenase B antibody WB image

Western blot: 30 μ g of HeLa, Jurkat, H1299, A549, Mouse brain, Mouse heart, Mouse lung and Rat brain lysates stained with ARG55125 anti-Lactate Dehydrogenase B antibody at 1:500 dilution.