

ARG30309 Polycomb Complexes Antibody Panel (H3K27me3, EZH2, Ring1A, RNF2)

Package: 1 kit
Store at: -20°C

Component

Cat. No.	Component Name	Host clonality	Reactivity	Application	Package
ARG54703	anti-EZH2 antibody	Rabbit pAb	Hu, Ms	FACS, ICC/IF, IHC-P, WB	50 µl
ARG63505	anti-RNF2 / RING1B / BAP1 antibody	Goat pAb	Hu	WB	50 µg
ARG51437	anti-Ring1A antibody	Rabbit pAb	Hu, Ms, Rat	WB	50 µl
ARG51851	anti-Histone H3 trimethyl (Lys27) antibody	Rabbit pAb	Hu, Ms, Rat	ICC/IF, IHC-P, WB	50 µl
ARG65351	Goat anti-Rabbit IgG antibody (HRP)	Goat pAb	Rb	ELISA, IHC-P, WB	50 µl
ARG65352	Donkey anti-Goat IgG antibody (HRP)	Donkey pAb	Goat	ELISA, IHC-P, WB	50 µl

Summary

Product Description	<p>Polycomb-group (PcG) genes encode chromatin proteins involved in stable and heritable transcriptional silencing. PcG proteins participate in distinct multimeric complexes that deposit, or bind to, specific histone modifications (e.g., H3K27me3) to prevent gene activation and maintain repressed chromatin domains. Ezh2, Ring1A and Ring1B are core components of the mammalian Polycomb system, which regulates cell differentiation during embryonic development and tissue maintenance during adult life.</p> <p>Grossniklaus and Paro. Cold Spring Harb Perspect Biol 3:11 (2014) Rajasekhar and Begemann. Stem Cells 25: 2498-2510 (2007) Chen et al. Am J Transl Res: 4: 364-75 (2012)</p>
Target Name	Polycomb Complexes
Alternate Names	Polycomb Complexes antibody; Ring1A antibody; Histone H3 trimethyl (Lys27) antibody; EZH2 antibody; RNF2 / RING1B / BAP1 antibody

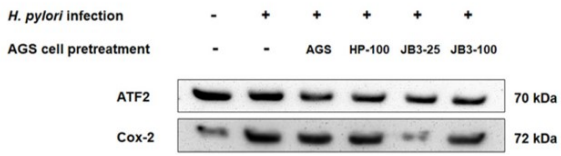
Properties

Storage instruction	For continuous use, store undiluted antibody at 2-8°C for up to a week. For long-term storage, aliquot and store at -20°C or below. Storage in frost free freezers is not recommended. Avoid repeated freeze/thaw cycles. Suggest spin the vial prior to opening. The antibody solution should be gently mixed before use.
Note	For laboratory research only, not for drug, diagnostic or other use.

Bioinformation

Gene Full Name	Antibody Panel for Polycomb Complexes (H3K27me3, EZH2, Ring1A, RNF2)
-----------------------	--

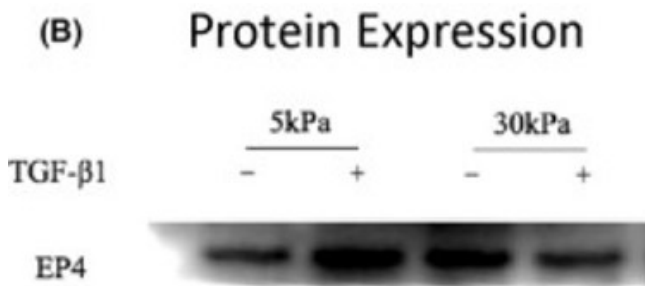
Images



ARG65352 Donkey anti-Goat IgG antibody (HRP) WB image

Western blot: AGS cells stained with [ARG56421 anti-COX2 antibody](#), [ARG63122 anti-ATF2 antibody](#) and ARG65352 Donkey anti-Goat IgG antibody (HRP).

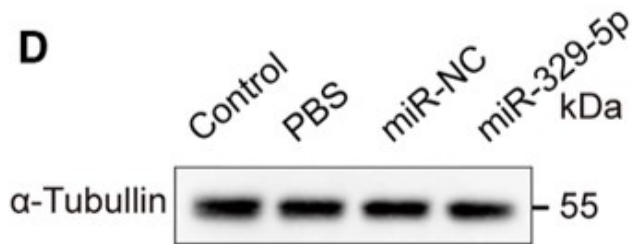
From Anh Duy Do et al. Front Immunol. (2022), [doi: 10.3389/fimmu.2021.796177](#), Fig. 5.D.



ARG65352 Donkey anti-Goat IgG antibody (HRP) WB image

Western blot: Endometrial Stromal cells stained with [ARG63922 anti-EP4 prostaglandin Receptor antibody](#) at 1:1000 dilution and ARG65352 Donkey anti-Goat IgG antibody (HRP).

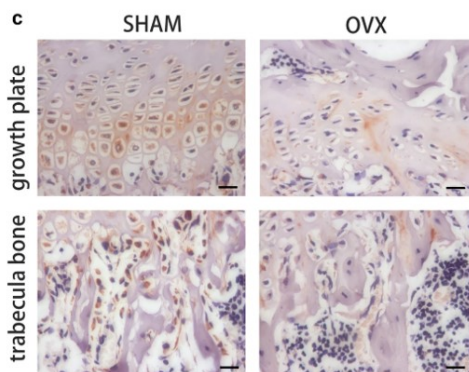
From Qingqing Huang et al. Reprod Med Biol. (2021), [doi: 10.1002/rmb2.12423](#), Fig. 3.C.



ARG65351 Goat anti-Rabbit IgG antibody (HRP) WB image

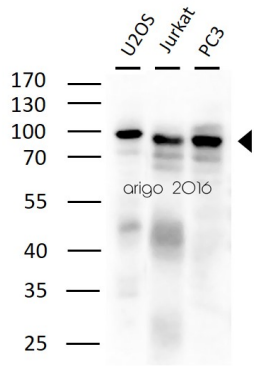
Western blot: Mouse retina stained with [ARG65693 anti-alpha Tubulin antibody](#) and ARG65351 Goat anti-Rabbit IgG antibody (HRP)

From Xiaoyuan Ye et al. Mol Ther Nucleic Acids. (2024), [doi: 10.1016/j.omtn.2024.102209](#), Fig. 5.D.



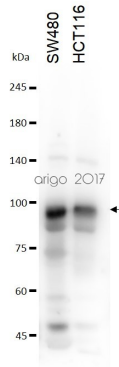
ARG65351 Goat anti-Rabbit IgG antibody (HRP) IHC-P image

From Yu-Qian Song et al. J Mol Med (Berl) (2022), [doi: 10.1007/s00109-021-02165-0](#), Fig. 5.c.



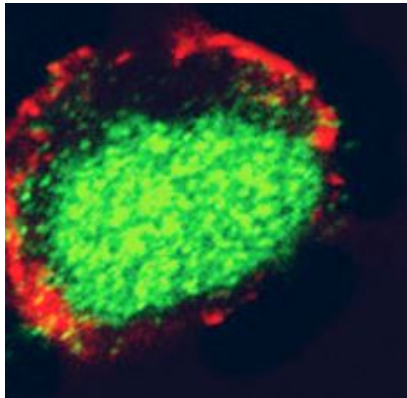
ARG54703 anti-EZH2 antibody WB image

Western blot: 30 µg of U2OS, Jurkat and PC3 cell lysates stained with ARG54703 anti-EZH2 antibody at 1:1000 dilution



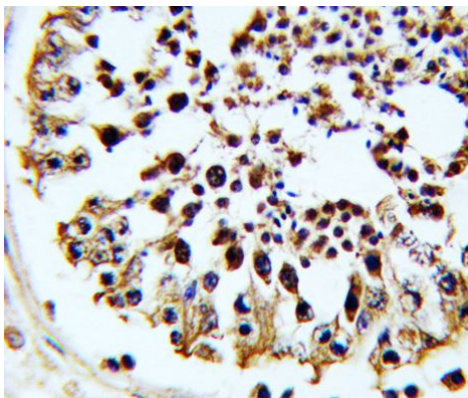
ARG54703 anti-EZH2 antibody WB image

Western blot: 30 µg of SW480 and HCT116 cell lysates stained with ARG54703 anti-EZH2 antibody at 1:1000 dilution.



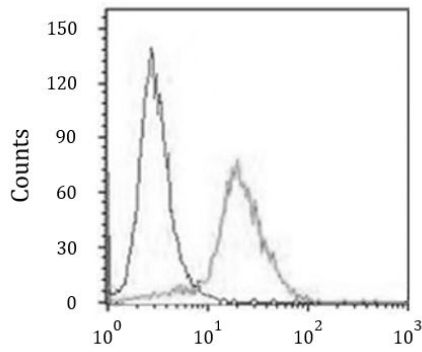
ARG54703 anti-EZH2 antibody ICC/IF image

Immunofluorescence: 293 cells stained with ARG54703 anti-EZH2 antibody. Actin filaments have been labeled with Alexa Fluor 555 phalloidin (red).



ARG54703 anti-EZH2 antibody IHC-P image

Immunohistochemistry: Paraffin-embedded Human testis tissue stained with ARG54703 anti-EZH2 antibody.



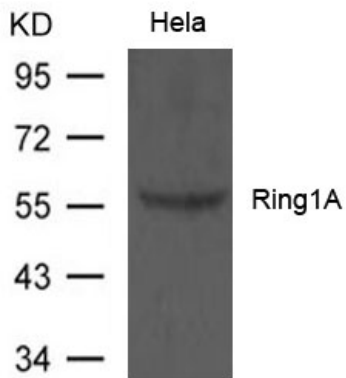
ARG54703 anti-EZH2 antibody FACS image

Flow Cytometry: HeLa cells stained with ARG54703 anti-EZH2 antibody (right histogram) at 1:25 dilution or isotype control antibody (left histogram), followed by incubation with Alexa Fluor® 488 labelled secondary antibody.



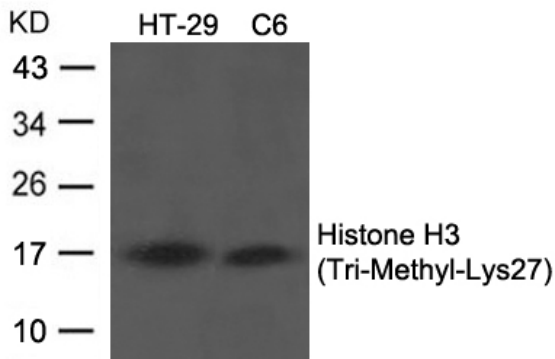
ARG63505 anti-RNF2 / RING1B / BAP1 antibody WB image

Western blot: 35 µg of K562 lysate stained with ARG63505 anti-RNF2 / RING1B / BAP1 antibody at 0.5 µg/ml dilution.



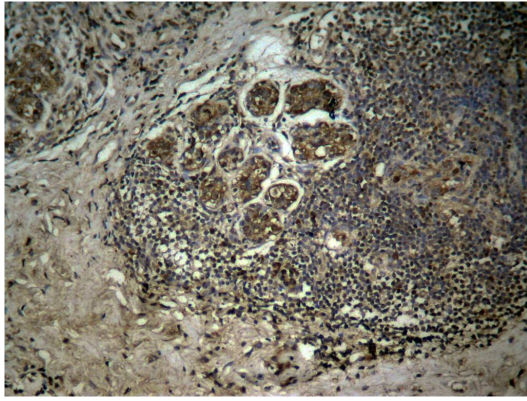
ARG51437 anti-Ring1A antibody WB image

Western Blot: extract from HeLa cells stained with anti-Ring1A antibody ARG51437



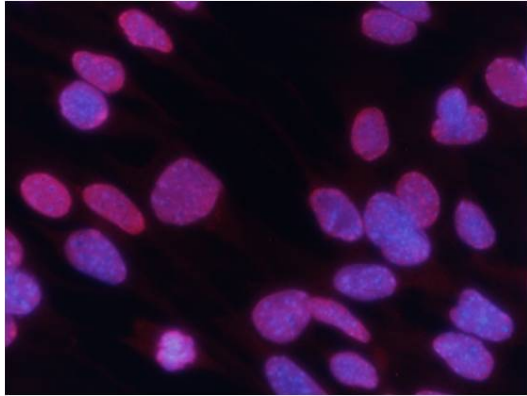
ARG51851 anti-Histone H3 (Tri-Methyl-Lys27) antibody WB image

Western Blot: extracts from HT29 and C6 cells stained with anti-Histone H3 (Tri-Methyl-Lys27) antibody ARG51851.



ARG51851 anti-Histone H3 (Tri-Methyl-Lys27) antibody IHC-P image

Immunohistochemistry: paraffin-embedded human breast carcinoma tissue stained with anti-Histone H3 (Tri-Methyl-Lys27) antibody ARG51851.



ARG51851 anti-Histone H3 (Tri-Methyl-Lys27) antibody ICC/IF image

Immunofluorescence: methanol-fixed MEF cells stained with anti-Histone H3 (Tri-Methyl-Lys27) antibody ARG51851.
