

ARG40201 anti-CD61 / Integrin beta 3 antibody

Package: 50 µg
Store at: -20°C

Summary

Product Description	Rabbit Polyclonal antibody recognizes CD61 / Integrin beta 3
Tested Reactivity	Hu
Predict Reactivity	Ms, Rat, Hm
Tested Application	FACS, IHC-P, WB
Host	Rabbit
Clonality	Polyclonal
Isotype	IgG
Target Name	CD61 / Integrin beta 3
Species	Human
Immunogen	Synthetic peptide corresponding to aa. 752-770 of Human CD61 / Integrin beta 3. (EFAKFEERARAKWDTANN)
Conjugation	Un-conjugated
Alternate Names	GT; CD antigen CD61; CD61; BDPLT2; GPIIIa; BDPLT16; GP3A; Platelet membrane glycoprotein IIIa; Integrin beta-3

Application Instructions

Application table	Application	Dilution
	FACS	1:150 - 1:500
	IHC-P	0.5 - 1 µg/ml
	WB	0.1 - 0.5 µg/ml

Application Note
IHC-P: Antigen Retrieval: By heat mediation.
* The dilutions indicate recommended starting dilutions and the optimal dilutions or concentrations should be determined by the scientist.

Properties

Form	Liquid
Purification	Affinity purification with immunogen.
Buffer	0.9% NaCl, 0.2% Na ₂ HPO ₄ , 0.05% Thimerosal, 0.05% Sodium azide and 5% BSA.
Preservative	0.05% Thimerosal and 0.05% Sodium azide
Stabilizer	5% BSA
Concentration	0.5 mg/ml
Storage instruction	For continuous use, store undiluted antibody at 2-8°C for up to a week. For long-term storage, aliquot and store at -20°C or below. Storage in frost free freezers is not recommended. Avoid repeated

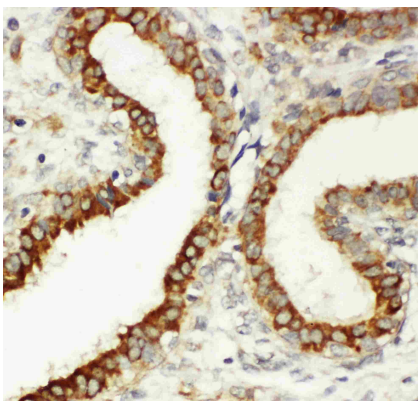
freeze/thaw cycles. Suggest spin the vial prior to opening. The antibody solution should be gently mixed before use.

Note For laboratory research only, not for drug, diagnostic or other use.

Bioinformation

Gene Symbol	ITGB3
Gene Full Name	integrin, beta 3 (platelet glycoprotein IIIa, antigen CD61)
Background	The ITGB3 protein product is the integrin beta chain beta 3. Integrins are integral cell-surface proteins composed of an alpha chain and a beta chain. A given chain may combine with multiple partners resulting in different integrins. Integrin beta 3 is found along with the alpha IIb chain in platelets. Integrins are known to participate in cell adhesion as well as cell-surface mediated signalling. [provided by RefSeq, Jul 2008]
Function	Integrin alpha-V/beta-3 (ITGAV:ITGB3) is a receptor for cytotactin, fibronectin, laminin, matrix metalloproteinase-2, osteopontin, osteomodulin, prothrombin, thrombospondin, vitronectin and von Willebrand factor. Integrin alpha-IIb/beta-3 (ITGA2B:ITGB3) is a receptor for fibronectin, fibrinogen, plasminogen, prothrombin, thrombospondin and vitronectin. Integrins alpha-IIb/beta-3 and alpha-V/beta-3 recognize the sequence R-G-D in a wide array of ligands. Integrin alpha-IIb/beta-3 recognizes the sequence H-H-L-G-G-A-K-Q-A-G-D-V in fibrinogen gamma chain. Following activation integrin alpha-IIb/beta-3 brings about platelet/platelet interaction through binding of soluble fibrinogen. This step leads to rapid platelet aggregation which physically plugs ruptured endothelial surface. Fibrinogen binding enhances SELP expression in activated platelets (By similarity). In case of HIV-1 infection, the interaction with extracellular viral Tat protein seems to enhance angiogenesis in Kaposi's sarcoma lesions. [UniProt]
Calculated Mw	87 kDa
PTM	Phosphorylated on tyrosine residues in response to thrombin-induced platelet aggregation. Probably involved in outside-in signaling. A peptide (AA 740-762) is capable of binding GRB2 only when both Tyr-773 and Tyr-785 are phosphorylated. Phosphorylation of Thr-779 inhibits SHC binding. [UniProt]
Cellular Localization	Cell membrane; Single-pass type I membrane protein. Cell projection, lamellipodium membrane. Cell junction, focal adhesion. [UniProt]

Images

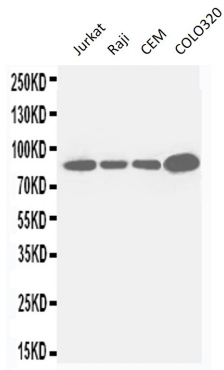


ARG40201 anti-CD61 / Integrin beta 3 antibody IHC-P image

Immunohistochemistry: Paraffin-embedded Human mammary cancer stained with ARG40201 anti-CD61 / Integrin beta 3 antibody.

ARG40201 anti-CD61 / Integrin beta 3 antibody WB image

Western blot: Jurkat, Raji, CEM and COLO320 cell lysates stained with ARG40201 anti-CD61 / Integrin beta 3 antibody.



ARG40201 anti-CD61 / Integrin beta 3 antibody FACS image

Flow Cytometry: Human PBMC cells were blocked with 10% normal goat serum and then stained with ARG40201 anti-CD61 / Integrin beta 3 antibody (blue) at $1 \mu\text{g}/10^6$ cells for 30 min at 20°C , followed by incubation with DyLight[®]488 labelled secondary antibody. Isotype control antibody (green) was rabbit IgG ($1 \mu\text{g}/10^6$ cells) used under the same conditions. Unlabelled sample (red) was also used as a control.

