

## ARG41142 anti-Cardiac Troponin I antibody

Package: 100 µl  
Store at: -20°C

### Summary

Product Description	Rabbit Polyclonal antibody recognizes Cardiac Troponin I
Tested Reactivity	Hu
Tested Application	ICC/IF, IHC-P, IP, WB
Host	Rabbit
Clonality	Polyclonal
Isotype	IgG
Target Name	Cardiac Troponin I
Species	Human
Immunogen	Synthetic peptide derived from Human Cardiac Troponin I.
Conjugation	Un-conjugated
Alternate Names	RCM1; cTnI; Cardiac troponin I; TNNC1; CMD1FF; CMD2A; Troponin I, cardiac muscle; CMH7

### Application Instructions

Application table	Application	Dilution
	ICC/IF	1:50 - 1:200
	IHC-P	1:50 - 1:200
	IP	1:50
	WB	1:5000 - 1:10000
Application Note	* The dilutions indicate recommended starting dilutions and the optimal dilutions or concentrations should be determined by the scientist.	
Positive Control	Human fetal heart	

### Properties

Form	Liquid
Purification	Affinity purified.
Buffer	PBS (pH 7.4), 150 mM NaCl, 0.02% Sodium azide and 50% Glycerol.
Preservative	0.02% Sodium azide
Stabilizer	50% Glycerol
Storage instruction	For continuous use, store undiluted antibody at 2-8°C for up to a week. For long-term storage, aliquot and store at -20°C. Storage in frost free freezers is not recommended. Avoid repeated freeze/thaw cycles. Suggest spin the vial prior to opening. The antibody solution should be gently mixed before use.

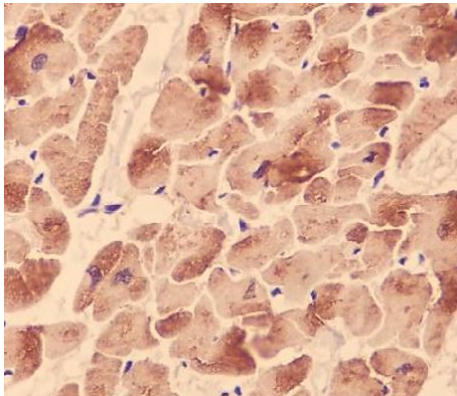
Note

For laboratory research only, not for drug, diagnostic or other use.

## Bioinformation

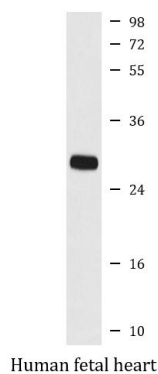
Gene Symbol	TNNI3
Gene Full Name	troponin I type 3 (cardiac)
Background	Troponin I (TnI), along with troponin T (TnT) and troponin C (TnC), is one of 3 subunits that form the troponin complex of the thin filaments of striated muscle. TnI is the inhibitory subunit; blocking actin-myosin interactions and thereby mediating striated muscle relaxation. The TnI subfamily contains three genes: TnI-skeletal-fast-twitch, TnI-skeletal-slow-twitch, and TnI-cardiac. This gene encodes the TnI-cardiac protein and is exclusively expressed in cardiac muscle tissues. Mutations in this gene cause familial hypertrophic cardiomyopathy type 7 (CMH7) and familial restrictive cardiomyopathy (RCM). [provided by RefSeq, Jul 2008]
Function	Troponin I is the inhibitory subunit of troponin, the thin filament regulatory complex which confers calcium-sensitivity to striated muscle actomyosin ATPase activity. [UniProt]
Calculated Mw	24 kDa
PTM	Phosphorylated at Ser-42 and Ser-44 by PRKCE; phosphorylation increases myocardium contractile dysfunction (By similarity). Phosphorylated at Ser-23 and Ser-24 by PRKD1; phosphorylation reduces myofilament calcium sensitivity. Phosphorylated preferentially at Thr-31. Phosphorylation by STK4/MST1 alters its binding affinity to TNNC1 (cardiac Tn-C) and TNNT2 (cardiac Tn-T). [UniProt]

## Images



ARG41142 anti-Cardiac Troponin I antibody IHC-P image

Immunohistochemistry: Paraffin-embedded Human heart stained with ARG41142 anti-Cardiac Troponin I antibody.



ARG41142 anti-Cardiac Troponin I antibody WB image

Western blot: Human fetal heart lysate stained with ARG41142 anti-Cardiac Troponin I antibody.