

**ARG41717**  
anti-TRIM31 antibodyPackage: 50 µl  
Store at: -20°C

### Summary

Product Description	Rabbit Polyclonal antibody recognizes TRIM31
Tested Reactivity	Hu
Tested Application	IHC-P, WB
Host	Rabbit
Clonality	Polyclonal
Isotype	IgG
Target Name	TRIM31
Species	Human
Immunogen	Fusion protein of Human TRIM31.
Conjugation	Un-conjugated
Alternate Names	EC 6.3.2.-; E3 ubiquitin-protein ligase TRIM31; Tripartite motif-containing protein 31; RNF; HCGI; HCG1; C6orf13

### Application Instructions

Application table	Application	Dilution
	IHC-P	1:10 - 1:50
	WB	1:200 - 1:1000
Application Note	* The dilutions indicate recommended starting dilutions and the optimal dilutions or concentrations should be determined by the scientist.	
Positive Control	WB: Human kidney IHC-P: Human esophagus cancer	
Observed Size	~ 50 kDa	

### Properties

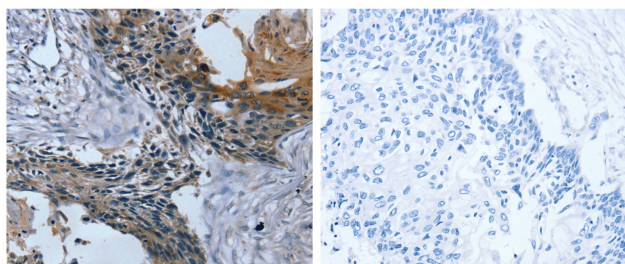
Form	Liquid
Purification	Affinity purification with immunogen.
Buffer	PBS (pH 7.4), 0.05% Sodium azide and 40% Glycerol.
Preservative	0.05% Sodium azide
Stabilizer	40% Glycerol
Concentration	0.2 mg/ml
Storage instruction	For continuous use, store undiluted antibody at 2-8°C for up to a week. For long-term storage, aliquot and store at -20°C. Storage in frost free freezers is not recommended. Avoid repeated freeze/thaw cycles. Suggest spin the vial prior to opening. The antibody solution should be gently mixed before use.

Note For laboratory research only, not for drug, diagnostic or other use.

## Bioinformation

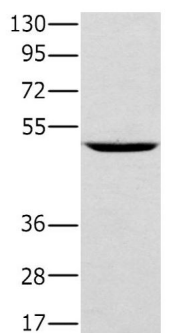
Gene Symbol	TRIM31
Gene Full Name	tripartite motif containing 31
Background	The protein encoded by this gene is a member of the tripartite motif (TRIM) family. The TRIM motif includes three zinc-binding domains, a RING, a B-box type 1 and a B-box type 2, and a coiled-coil region. The protein localizes to both the cytoplasm and the nucleus. Its function has not been identified. [provided by RefSeq, Jul 2008]
Function	Regulator of Src-induced anchorage independent cell growth (By similarity). May have E3 ubiquitin-protein ligase activity. [UniProt]
Calculated Mw	48 kDa
PTM	Auto-ubiquitinated (in vitro). [UniProt]
Cellular Localization	Cytoplasm. Mitochondrion. Note=Predominantly expressed in the cytoplasm but a fraction is associated with the mitochondria. [UniProt]

## Images



ARG41717 anti-TRIM31 antibody IHC-P image

Immunohistochemistry: Paraffin-embedded Human esophagus cancer tissue stained with ARG41717 anti-TRIM31 antibody (left) at 1:20 dilution, or the same antibody pre-incubated with fusion protein (right). (Original magnification: X200).



Human kidney

ARG41717 anti-TRIM31 antibody WB image

Western blot: 40 µg of Human kidney lysate stained with ARG41717 anti-TRIM31 antibody at 1:300 dilution.