

ARG42064 anti-VEGF antibody

Package: 50 µg
Store at: -20°C

Summary

Product Description	Goat Polyclonal antibody recognizes VEGF
Tested Reactivity	Hu
Tested Application	ELISA, WB
Host	Goat
Clonality	Polyclonal
Isotype	IgG
Target Name	VEGF
Species	Human
Immunogen	Recombinant Human VEGF.
Conjugation	Un-conjugated
Alternate Names	MVCD1; Vascular permeability factor; VEGF-A; VPF; VEGF; Vascular endothelial growth factor A

Application Instructions

Application table	Application	Dilution
	ELISA	Capture: 0.5 - 2 µg/ml Detection: 0.25 - 1 µg/ml
	WB	0.1 - 0.2 µg/ml

Application Note
Sandwich ELISA (Capture antibody - Detection antibody):
ARG42064 (0.5 - 2 µg/ml) - [ARG42065](#) (0.25 - 1 µg/ml)
[ARG56585](#) (0.5 - 2 µg/ml) - ARG42064 (0.25 - 1 µg/ml)

* The dilutions indicate recommended starting dilutions and the optimal dilutions or concentrations should be determined by the scientist.

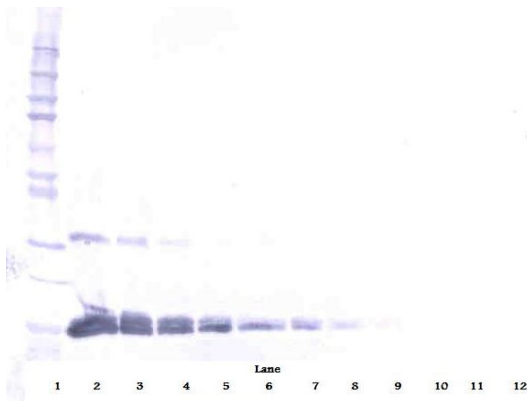
Properties

Form	Liquid
Purification	Affinity purification with immunogen.
Buffer	PBS (pH 7.2)
Concentration	1 mg/ml
Storage instruction	For continuous use, store undiluted antibody at 2-8°C for up to a week. For long-term storage, aliquot and store at -20°C or below. Storage in frost free freezers is not recommended. Avoid repeated freeze/thaw cycles. Suggest spin the vial prior to opening. The antibody solution should be gently mixed before use.
Note	For laboratory research only, not for drug, diagnostic or other use.

Bioinformation

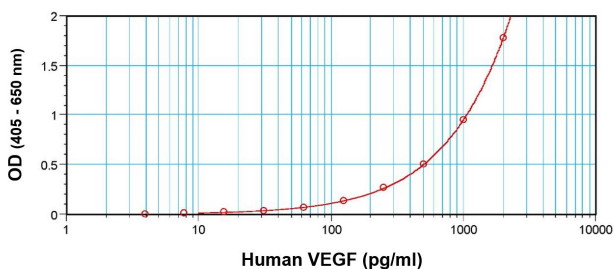
Gene Symbol	VEGFA
Gene Full Name	vascular endothelial growth factor A
Function	Growth factor active in angiogenesis, vasculogenesis and endothelial cell growth. Induces endothelial cell proliferation, promotes cell migration, inhibits apoptosis and induces permeabilization of blood vessels. Binds to the FLT1/VEGFR1 and KDR/VEGFR2 receptors, heparan sulfate and heparin. NRP1/Neuropilin-1 binds isoforms VEGF-165 and VEGF-145. Isoform VEGF165B binds to KDR but does not activate downstream signaling pathways, does not activate angiogenesis and inhibits tumor growth. Binding to NRP1 receptor initiates a signaling pathway needed for motor neuron axon guidance and cell body migration, including for the caudal migration of facial motor neurons from rhombomere 4 to rhombomere 6 during embryonic development (By similarity). [UniProt]
Highlight	Related products: VEGF antibodies ; VEGF ELISA Kits ; VEGF Duos / Panels ; VEGF recombinant proteins ; Anti-Goat IgG secondary antibodies ; Related news: The role of HDGF in tumor angiogenesis
Calculated Mw	22 kDa
Cellular Localization	Secreted. Note=VEGF121 is acidic and freely secreted. VEGF165 is more basic, has heparin-binding properties and, although a significant proportion remains cell-associated, most is freely secreted. VEGF189 is very basic, it is cell-associated after secretion and is bound avidly by heparin and the extracellular matrix, although it may be released as a soluble form by heparin, heparinase or plasmin. [UniProt]

Images



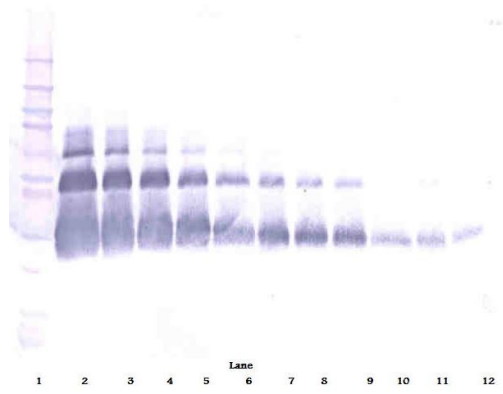
ARG42064 anti-VEGF antibody WB image

Western blot: 3.0 - 1.5 ng of recombinant human VEGF protein stained with ARG42064 anti-VEGF antibody, under reducing conditions.



ARG42064 anti-VEGF antibody ELISA image

Sandwich ELISA: Detecting human VEGF (using 100 μ l/well antibody solution). ARG42064 anti-VEGF antibody as a capture antibody at 0.5 - 2 μ g/ml dilution in combination with [ARG42065](#) anti-VEGF antibody (Biotin) as a detection antibody at 0.25 - 1.0 μ g/ml dilution. Results of a typical standard run with optical density reading at 405 - 650 nm.



ARG42064 anti-VEGF antibody WB image

Western blot: 3.0 - 1.5 ng of recombinant human VEGF protein stained with ARG42064 anti-VEGF antibody, under non-reducing conditions.