

ARG42236 anti-CD34 antibody

Package: 100 µl
Store at: -20°C

Summary

Product Description	Rabbit Polyclonal antibody recognizes CD34
Tested Reactivity	Hu, Ms, Rat, Dog
Tested Application	FACS, ICC/IF, IHC-P, IP, WB
Host	Rabbit
Clonality	Polyclonal
Isotype	IgG
Target Name	CD34
Species	Human
Immunogen	Synthetic peptide of Human CD34.
Conjugation	Un-conjugated
Alternate Names	Hematopoietic progenitor cell antigen CD34; CD antigen CD34

Application Instructions

Application table	Application	Dilution
	FACS	1:50
	ICC/IF	1:50 - 1:200
	IHC-P	1:50 - 1:200
	IP	1:50
	WB	1:500 - 1:2000
Application Note	* The dilutions indicate recommended starting dilutions and the optimal dilutions or concentrations should be determined by the scientist.	
Positive Control	NIH/3T3	
Observed Size	~ 120 kDa	

Properties

Form	Liquid
Purification	Affinity purified.
Buffer	PBS (pH 7.4), 150 mM NaCl, 0.02% Sodium azide and 50% Glycerol.
Preservative	0.02% Sodium azide
Stabilizer	50% Glycerol
Storage instruction	For continuous use, store undiluted antibody at 2-8°C for up to a week. For long-term storage, aliquot

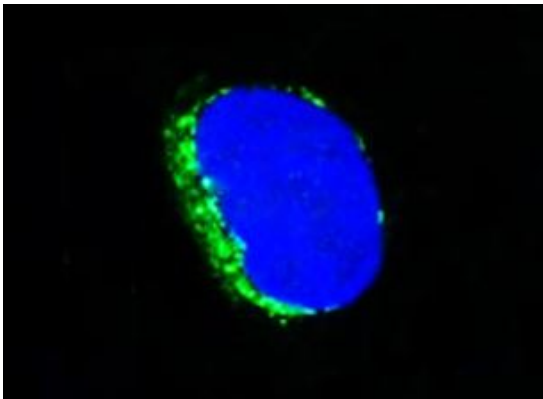
and store at -20°C. Storage in frost free freezers is not recommended. Avoid repeated freeze/thaw cycles. Suggest spin the vial prior to opening. The antibody solution should be gently mixed before use.

Note For laboratory research only, not for drug, diagnostic or other use.

Bioinformation

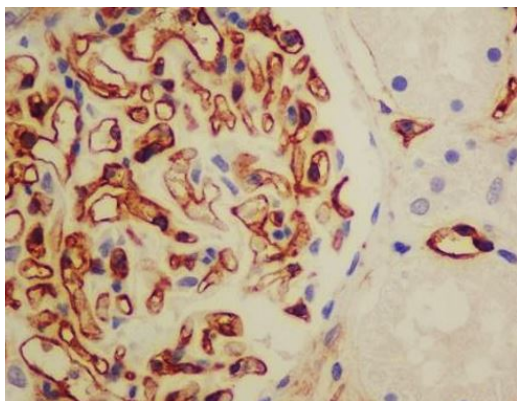
Gene Symbol	CD34
Gene Full Name	CD34 molecule
Background	The protein encoded by this gene may play a role in the attachment of stem cells to the bone marrow extracellular matrix or to stromal cells. This single-pass membrane protein is highly glycosylated and phosphorylated by protein kinase C. Two transcript variants encoding different isoforms have been found for this gene. [provided by RefSeq, Aug 2011]
Function	Possible adhesion molecule with a role in early hematopoiesis by mediating the attachment of stem cells to the bone marrow extracellular matrix or directly to stromal cells. Could act as a scaffold for the attachment of lineage specific glycans, allowing stem cells to bind to lectins expressed by stromal cells or other marrow components. Presents carbohydrate ligands to selectins. [UniProt]
Calculated Mw	41 kDa
PTM	Highly glycosylated. Phosphorylated on serine residues by PKC. [UniProt]
Cellular Localization	Membrane; Single-pass type I membrane protein. [UniProt]

Images



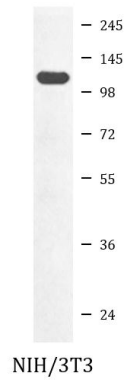
ARG42236 anti-CD34 antibody ICC/IF image

Immunofluorescence: HUVEC cells stained with ARG42236 anti-CD34 antibody.



ARG42236 anti-CD34 antibody IHC-P image

Immunohistochemistry: Paraffin-embedded Human kidney tissue stained with ARG42236 anti-CD34 antibody.



ARG42236 anti-CD34 antibody WB image

Western blot: NIH/3T3 cell lysate stained with ARG42236 anti-CD34 antibody.