

## ARG43788 anti-Nephrin antibody

Package: 50 µg  
Store at: -20°C

### Summary

Product Description	Rabbit Polyclonal antibody recognizes Nephrin
Tested Reactivity	Ms, Rat
Predict Reactivity	Hu
Tested Application	IHC-P, WB
Host	Rabbit
Clonality	Polyclonal
Isotype	IgG
Target Name	Nephrin
Species	Human
Immunogen	Recombinant protein corresponding to a.a. V1084-V1241 of Human Nephrin.
Conjugation	Un-conjugated
Alternate Names	CNF; NPHN; Renal glomerulus-specific cell adhesion receptor; nephrin; Nephrin

### Application Instructions

Application table	Application	Dilution
	IHC-P	0.5 - 1 µg/ml
	WB	0.25 - 1 µg/ml
Application Note	* The dilutions indicate recommended starting dilutions and the optimal dilutions or concentrations should be determined by the scientist.	
Positive Control	Mouse Kidney; Rat Kidney	
Observed Size	~180 kDa	

### Properties

Form	Liquid
Purification	Affinity purification with immunogen.
Buffer	0.9% NaCl, 0.2% Na <sub>2</sub> HPO <sub>4</sub> , 0.05% Sodium azide and 4% Trehalose.
Preservative	0.05% Sodium azide
Stabilizer	4% Trehalose
Concentration	0.5 mg/ml
Storage instruction	For continuous use, store undiluted antibody at 2-8°C for up to a week. For long-term storage, aliquot and store at -20°C or below. Storage in frost free freezers is not recommended. Avoid repeated freeze/thaw cycles. Suggest spin the vial prior to opening. The antibody solution should be gently mixed

before use.

**Note** For laboratory research only, not for drug, diagnostic or other use.

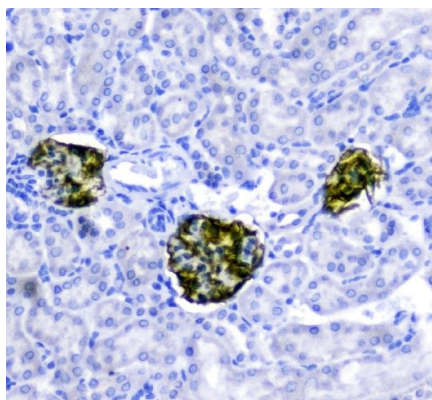
## Bioinformation

---

Gene Symbol	NPHS1
Gene Full Name	nephrosis 1, congenital, Finnish type (nephrin)
Background	This gene encodes a member of the immunoglobulin family of cell adhesion molecules that functions in the glomerular filtration barrier in the kidney. The gene is primarily expressed in renal tissues, and the protein is a type-1 transmembrane protein found at the slit diaphragm of glomerular podocytes. The slit diaphragm is thought to function as an ultrafilter to exclude albumin and other plasma macromolecules in the formation of urine. Mutations in this gene result in Finnish-type congenital nephrosis 1, characterized by severe proteinuria and loss of the slit diaphragm and foot processes.[provided by RefSeq, Oct 2009]
Function	Seems to play a role in the development or function of the kidney glomerular filtration barrier. Regulates glomerular vascular permeability. May anchor the podocyte slit diaphragm to the actin cytoskeleton. Plays a role in skeletal muscle formation through regulation of myoblast fusion (By similarity). [UniProt]
Research Area	Signaling Transduction antibody
Calculated Mw	135 kDa
PTM	Phosphorylated at Tyr-1193 by FYN, leading to the recruitment and activation of phospholipase C-gamma-1/PLCG1.
Cellular Localization	Membrane

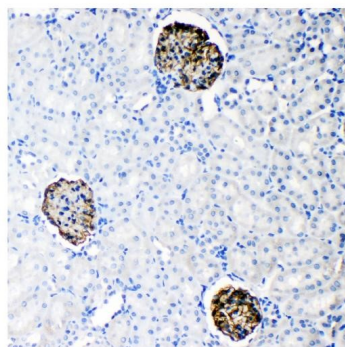
## Images

---



ARG43788 anti-Nephrin antibody IHC-P image

Immunohistochemistry: Paraffin-embedded Mouse Kidney tissue stained with ARG43788 anti-Nephrin antibody at a concentration of 2 µg/ml.



ARG43788 anti-Nephrin antibody IHC-P image

Immunohistochemistry: Paraffin-embedded Rat Kidney tissue stained with ARG43788 anti-Nephrin antibody at a concentration of 2 µg/ml.

### ARG43788 anti-Nephrin antibody WB image

Western blot: 1) Mouse Kidney tissue, and 2) Rat kidney tissue lysates stained with ARG43788 anti-Nephrin antibody at 1:1000 dilution.

