

ARG43828 anti-DLAT antibody

Package: 50 µg
Store at: -20°C

Summary

Product Description	Rabbit Polyclonal antibody recognizes DLAT
Tested Reactivity	Hu, Ms, Rat
Tested Application	FACS, ICC/IF, IHC-P, WB
Host	Rabbit
Clonality	Polyclonal
Isotype	IgG
Target Name	DLAT
Species	Human
Immunogen	Recombinant protein of human DLAT (aa.P69 - P642).
Conjugation	Un-conjugated
Alternate Names	Dihydropyridyllysine-residue acetyltransferase component of pyruvate dehydrogenase complex, mitochondrial; PDC-E2; Dihydropyridylamide acetyltransferase component of pyruvate dehydrogenase complex; M2 antigen complex 70 kDa subunit; EC 2.3.1.12; PBC; Pyruvate dehydrogenase complex component E2; DLTA; 70 kDa mitochondrial autoantigen of primary biliary cirrhosis; PDCE2

Application Instructions

Application table	Application	Dilution
	FACS	1:150-1:500/10 ⁶ cells
	ICC/IF	1:1000-1:5000
	IHC-P	1:100-1:250
	WB	1:1000-1:2000

Application Note * The dilutions indicate recommended starting dilutions and the optimal dilutions or concentrations should be determined by the scientist.

Properties

Form	Liquid
Purification	Affinity purified
Buffer	0.2% Na ₂ HPO ₄ , 0.9% NaCl, 0.05% Sodium azide and 4% Trehalose.
Preservative	0.05% Sodium azide
Stabilizer	4% Trehalose
Concentration	500 µg/ml
Storage instruction	For continuous use, store undiluted antibody at 2-8°C for up to a week. For long-term storage, aliquot and store at -20°C. Storage in frost free freezers is not recommended. Avoid repeated freeze/thaw

cycles. Suggest spin the vial prior to opening. The antibody solution should be gently mixed before use.

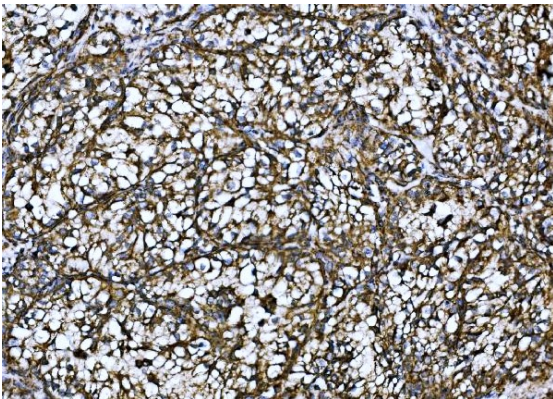
Note

For laboratory research only, not for drug, diagnostic or other use.

Bioinformation

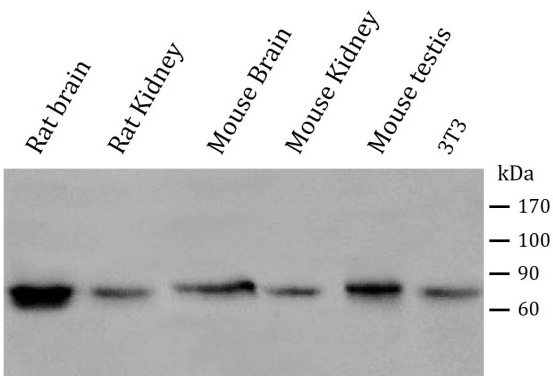
Gene Symbol	DLAT
Gene Full Name	dihydrolipoamide S-acetyltransferase
Background	The pyruvate dehydrogenase complex catalyzes the overall conversion of pyruvate to acetyl-CoA and CO ₂ . It contains multiple copies of three enzymatic components: pyruvate dehydrogenase (E1), dihydrolipoamide acetyltransferase (E2) and lipoamide dehydrogenase (E3).
Function	The pyruvate dehydrogenase complex catalyzes the overall conversion of pyruvate to acetyl-CoA and CO(2), and thereby links the glycolytic pathway to the tricarboxylic cycle. [UniProt]
Research Area	Controls and Markers antibody; Metabolism antibody; Signaling Transduction antibody
PTM	Delipoylated at Lys-132 and Lys-259 by SIRT4, delipoylation decreases the PHD complex activity.
Cellular Localization	Mitochondrion matrix.

Images



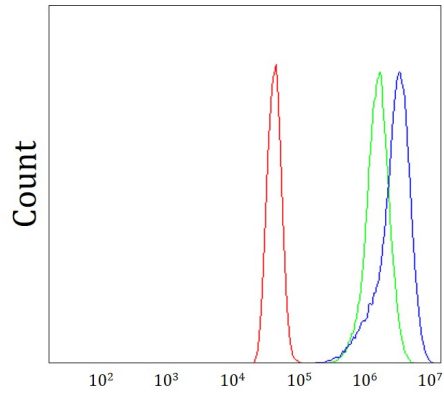
ARG43828 anti-DLAT antibody IHC-P image

Immunohistochemistry: Human Renal clear Cell Carcinoma stained with ARG43828 anti-DLAT antibody.



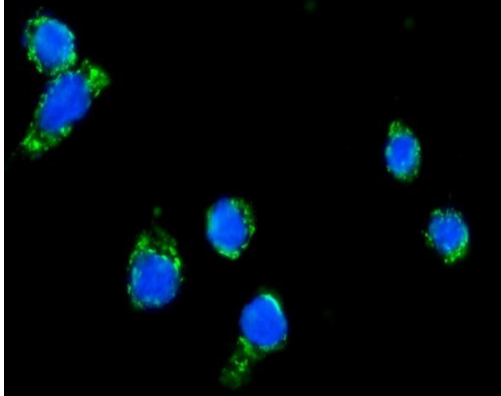
ARG43828 anti-DLAT antibody WB image

Western blot: Rat brain, Rat kidney, Mouse brain, Mouse kidney, Mouse testis and 3T3 stained with ARG43828 anti-DLAT antibody.



ARG43828 anti-DLAT antibody FACS image

Flow Cytometry: A431 stained with ARG43828 anti-DLAT antibody .



ARG43828 anti-DLAT antibody ICC/IF image

Immunofluorescence: Caco-2 Cells were stained with ARG43828 anti-DLAT antibody.