

ARG43834 anti-DLAT antibody

Package: 100 µl
Store at: -20°C

Summary

Product Description	Rabbit Polyclonal antibody recognizes DLAT.
Tested Reactivity	Hu, Ms, Rat, Hm
Tested Application	ICC/IF, IP, WB
Host	Rabbit
Clonality	Polyclonal
Isotype	IgG
Target Name	DLAT
Species	Human
Immunogen	Synthetic peptide of human DLAT.
Conjugation	Un-conjugated
Alternate Names	Dihydropolyllysine-residue acetyltransferase component of pyruvate dehydrogenase complex, mitochondrial; PDC-E2; Dihydropolamide acetyltransferase component of pyruvate dehydrogenase complex; M2 antigen complex 70 kDa subunit; EC 2.3.1.12; PBC; Pyruvate dehydrogenase complex component E2; DLTA; 70 kDa mitochondrial autoantigen of primary biliary cirrhosis; PDCE2

Application Instructions

Application table	Application	Dilution
	ICC/IF	1:50-1:200
	IP	1:20
	WB	1:500-1:1000

Application Note * The dilutions indicate recommended starting dilutions and the optimal dilutions or concentrations should be determined by the scientist.

Properties

Form	Liquid
Purification	Affinity purified
Buffer	Tris-Glycine (pH 7.4) with 0.15M NaCl, 40% Glycerol, 0.01% Sodium azide and 0.05% BSA
Preservative	0.01% Sodium azide
Stabilizer	40% Glycerol and 0.05% BSA
Storage instruction	For continuous use, store undiluted antibody at 2-8°C for up to a week. For long-term storage, aliquot and store at -20°C. Storage in frost free freezers is not recommended. Avoid repeated freeze/thaw cycles. Suggest spin the vial prior to opening. The antibody solution should be gently mixed before use.
Note	For laboratory research only, not for drug, diagnostic or other use.

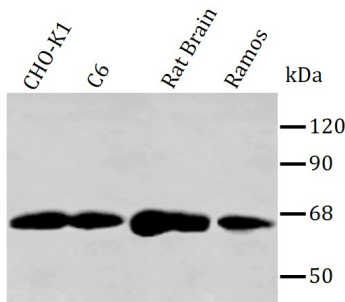
Bioinformation

Gene Symbol	DLAT
Gene Full Name	dihydrolipoamide S-acetyltransferase
Background	The pyruvate dehydrogenase complex catalyzes the overall conversion of pyruvate to acetyl-CoA and CO ₂ . It contains multiple copies of three enzymatic components: pyruvate dehydrogenase (E1), dihydrolipoamide acetyltransferase (E2) and lipoamide dehydrogenase (E3).
Function	The pyruvate dehydrogenase complex catalyzes the overall conversion of pyruvate to acetyl-CoA and CO ₂ , and thereby links the glycolytic pathway to the tricarboxylic cycle. [UniProt]
Research Area	Controls and Markers antibody; Metabolism antibody; Signaling Transduction antibody
PTM	Delipoylated at Lys-132 and Lys-259 by SIRT4, delipoylation decreases the PHD complex activity.
Cellular Localization	Mitochondrion matrix.

Images

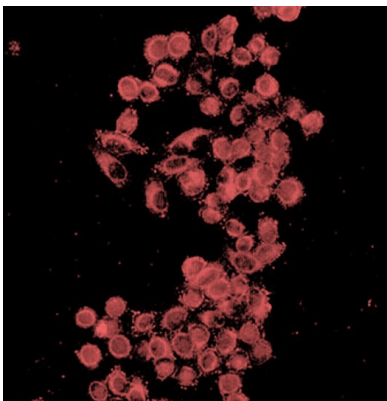
ARG43834 anti-DLAT antibody WB image

Western blot: : CHO-K1, C6, Rat Brain and Ramos stained with ARG43834 anti-DLAT antibody



ARG43834 anti-DLAT antibody ICC/IF image

Immunofluorescence: HeLa were stained with ARG43834 anti-DLAT antibody.



ARG43834 anti-DLAT antibody WB image

Western blot: Mouse Heart stained with ARG43834 anti-DLAT antibody

