

## ARG44884 anti-NSMCE1 antibody

Package: 50 µg  
Store at: -20°C

### Summary

Product Description	Mouse Monoclonal antibody recognizes NSMCE1
Tested Reactivity	Hu
Tested Application	IHC-P, IP, WB
Host	Mouse
Clonality	Monoclonal
Isotype	IgG1
Target Name	NSMCE1
Species	Human
Epitope	MQGSTRRMGV MTDVHRRFLQ LLMTHGVLEE WDVKRLQTHC YKVHDRNATV DKLEDFINNI NSVLESYIE IKRGVTEDDG RPIYALVNLA TTSISKMATD FAENELDLFR KALELIIDSE TGFASSTNIL NLVDQLKGGK MRKKEAEQVL QKFVQNKWLI EKEGEFTLHG RAILEMEQYI RETYPD AVKI CNICHSLLIQ GQSCETCGIR MHLPCVAKYF QSNAEPRCPH CNDYWPHEIP KVPDPEKERE SGVLKSNKKS LRSRQH
Conjugation	Un-conjugated
Alternate Names	NSMCE1; NSE1 Homolog, SMC5-SMC6 Complex Component; NSE1; Non-Structural Maintenance Of Chromosomes Element 1 Homolog; Non-SMC Element 1 Homolog; Non-SMC Element 1 Homolog (S. Cerevisiae); EC 2.3.2.27

### Application Instructions

Application table	Application	Dilution
	IHC-P	1:200
	IP	1:100
	WB	1:1000
Application Note	* The dilutions indicate recommended starting dilutions and the optimal dilutions or concentrations should be determined by the scientist.	

### Properties

Form	Liquid
Purification	Protein A purification
Buffer	PBS with 0.09% sodium azide
Preservative	0.09% sodium azide
Storage instruction	For continuous use, store undiluted antibody at 2-8°C for up to a week. For long-term storage, aliquot and store at -20°C or below. Storage in frost free freezers is not recommended. Avoid repeated freeze/thaw cycles. Suggest spin the vial prior to opening. The antibody solution should be gently mixed before use.

Note

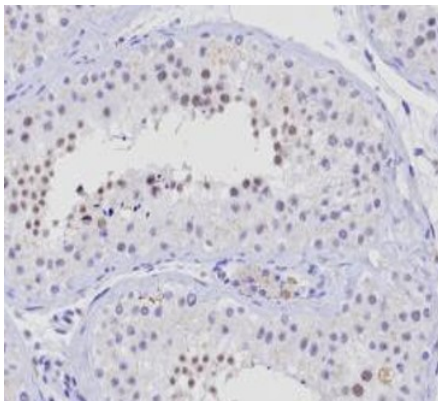
For laboratory research only, not for drug, diagnostic or other use.

## Bioinformation

---

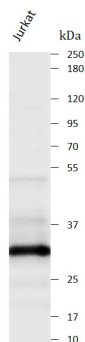
Gene Symbol	NSMCE1
Gene Full Name	NSE1 Homolog, SMC5-SMC6 Complex Component
Background	Enables protein dimerization activity and ubiquitin protein ligase activity. Involved in positive regulation of response to DNA damage stimulus. Located in nucleoplasm. Part of Smc5-Smc6 complex. [provided by Alliance of Genome Resources, Apr 2022]
Function	MAGEF1-NSMCE1 ubiquitin ligase promotes proteasomal degradation of MMS19, a key component of the cytosolic iron-sulfur protein assembly (CIA) machinery. Down-regulation of MMS19 impairs the activity of several DNA repair and metabolism enzymes such as ERCC2/XPD, FANCI, RTEL1 and POLD1 that require iron-sulfur clusters as cofactors. [Uniprot]
PTM	Phosphoprotein, Ubl conjugation. [Uniprot]
Cellular Localization	Chromosome, Nucleus, Telomere. [Uniprot]

## Images



ARG44884 anti-NSMCE1 antibody IHC-P image

Immunohistochemistry: Human heart muscle stained with ARG44884 anti-NSMCE1 antibody at 5 µg/mL dilution.



ARG44884 anti-NSMCE1 antibody WB image

Western blot: Jurkat stained with ARG44884 anti-NSMCE1 antibody at 1 µg/mL dilution.

ARG44884 anti-NSMCE1 antibody IP image

Immunoprecipitation: Jurkat lysate immunoprecipitated with 2.5  $\mu$ g of ARG44884 anti-NSMCE1 antibody.

