

## ARG45273 anti-FAM60A antibody

Package: 50 µg  
Store at: -20°C

### Summary

Product Description	Polyclonal antibody recognizes FAM60A
Tested Reactivity	Hu, Rat
Tested Application	FACS, ICC/IF, IHC-P, WB
Host	Rabbit
Clonality	Polyclonal
Isotype	Rabbit IgG
Target Name	FAM60A
Species	Human
Immunogen	Recombinant protein containing to human FAM60A.
Conjugation	Un-conjugated
Alternate Names	SINHCAF; SIN3-HDAC Complex Associated Factor; C12orf14; FAM60A; TERA; SIN3-HDAC Complex-Associated Factor; Tera Protein Homolog; Protein FAM60A; Family With Sequence Similarity 60, Member A; Family With Sequence Similarity 60 Member A; Chromosome 12 Open Reading Frame 14; L4

### Application Instructions

Application table	Application	Dilution
	FACS	1 - 3 µg/10 <sup>6</sup> cells
	ICC/IF	5 µg/ml
	IHC-P	2-5 µg/ml
	WB	0.25-0.5 µg/ml
Application Note	* The dilutions indicate recommended starting dilutions and the optimal dilutions or concentrations should be determined by the scientist.	
Observed Size	28-30 kDa	

### Properties

Form	Liquid
Purification	Affinity purification with immunogen.
Buffer	0.2% Na <sub>2</sub> HPO <sub>4</sub> , 0.9% NaCl and 4% Trehalose.
Stabilizer	4% Trehalose
Concentration	0.5 mg/ml
Storage instruction	For continuous use, store undiluted antibody at 2-8°C for up to a week. For long-term storage, aliquot and store at -20°C or below. Storage in frost free freezers is not recommended. Avoid repeated

freeze/thaw cycles. Suggest spin the vial prior to opening. The antibody solution should be gently mixed before use.

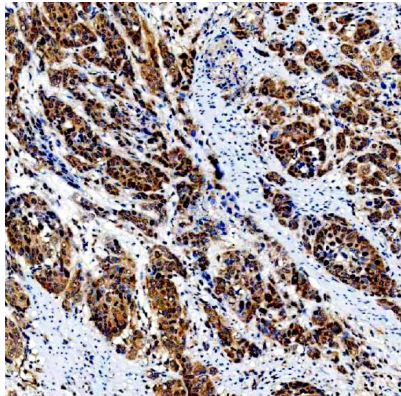
**Note** For laboratory research only, not for drug, diagnostic or other use.

## Bioinformation

---

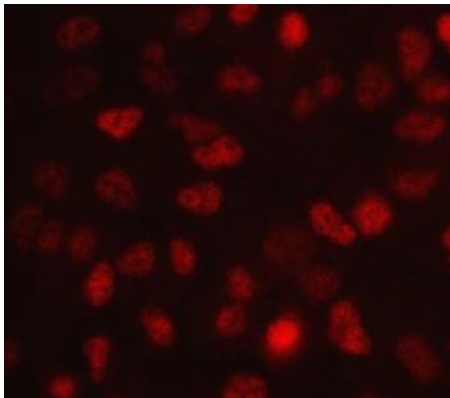
Gene Symbol	SINHCAF
Gene Full Name	SIN3-HDAC Complex Associated Factor
Background	Involved in negative regulation of cell migration. Part of Sin3-type complex. [provided by Alliance of Genome Resources, Nov 2024]
Function	Subunit of the Sin3 deacetylase complex (Sin3/HDAC), this subunit is important for the repression of genes encoding components of the TGF-beta signaling pathway (PubMed:22865885, PubMed:22984288). Core component of a SIN3A complex (composed of at least SINHCAF, SIN3A, HDAC1, SAP30, RBBP4, OGT and TET1) present in embryonic stem (ES) cells. Promotes the stability of SIN3A and its presence on chromatin and is essential for maintaining the potential of ES cells to proliferate rapidly, while ensuring a short G1-phase of the cell cycle, thereby preventing premature lineage priming. [UniProt]
Calculated Mw	25 kDa
Cellular Localization	Nucleus. [UniProt]

## Images



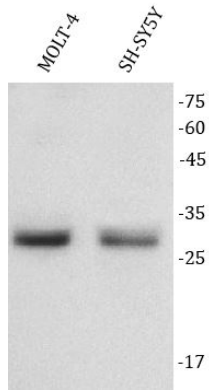
ARG45273 anti-FAM60A antibody IHC-P image

Immunohistochemistry: Human prostate adenocarcinoma stained with ARG45273 anti-FAM60A antibody at 2 µg/ml dilution.



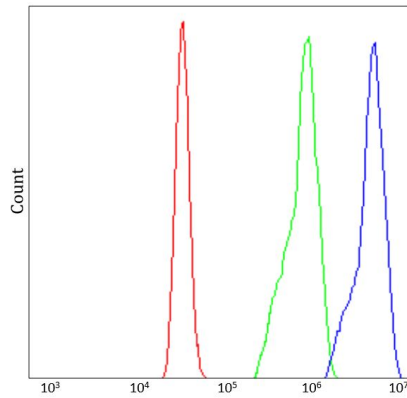
ARG45273 anti-FAM60A antibody ICC/IF image

Immunofluorescence: A549 stained with ARG45273 anti-FAM60A antibody at 5 µg/ml dilution.



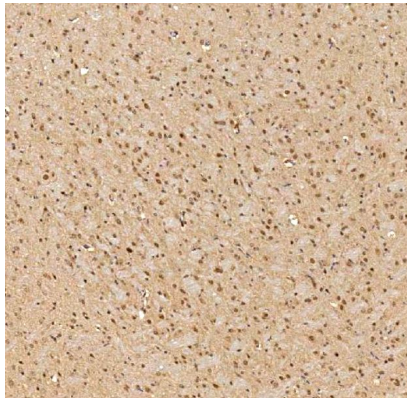
#### ARG45273 anti-FAM60A antibody WB image

Western blot: MOLT-4 and SH-SY5Y stained with ARG45273 anti-FAM60A antibody at 0.5  $\mu\text{g/ml}$  dilution.



#### ARG45273 anti-FAM60A antibody FACS image

Flow Cytometry: U937 stained with ARG45273 anti-FAM60A antibody at 1  $\mu\text{g}/10^6$  cells dilution.



#### ARG45273 anti-FAM60A antibody IHC-P image

Immunohistochemistry: Rat brain stained with ARG45273 anti-FAM60A antibody at 2  $\mu\text{g/ml}$  dilution.