

ARG45343
anti-CXCL13 / BCA1 antibody [19N1]Package: 50 µg
Store at: -20°C

Summary

Product Description	Rat Monoclonal antibody [19N1] recognizes CXCL13 / BCA1
Tested Reactivity	Ms
Tested Application	IHC-P
Host	Rat
Clonality	Monoclonal
Clone	19N1
Isotype	IgG2
Target Name	CXCL13 / BCA1
Species	Mouse
Immunogen	Recombinant Mouse CXCL13 / BCA1.
Conjugation	Un-conjugated
Alternate Names	BCA-1; Angie; C-X-C motif chemokine 13; CXC chemokine BLC; ANGIE2; B lymphocyte chemoattractant; B cell-attracting chemokine 1; BLR1L; Small-inducible cytokine B13; SCYB13; ANGIE; BLC; BCA1

Application Instructions

Application table	Application	Dilution
	IHC-P	1:100 - 1:200

Application Note * The dilutions indicate recommended starting dilutions and the optimal dilutions or concentrations should be determined by the scientist.

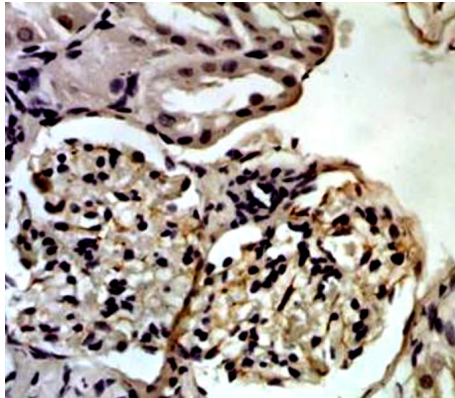
Properties

Form	Powder
Purification	Protein G/A chromatography
Buffer	PBS
Reconstitution	PBS
Concentration	0.2 mg/ml
Storage instruction	For continuous use, store undiluted antibody at 2-8°C for up to a week. For long-term storage, aliquot and store at -20°C or below. Storage in frost free freezers is not recommended. Avoid repeated freeze/thaw cycles. Suggest spin the vial prior to opening. The antibody solution should be gently mixed before use.
Note	For laboratory research only, not for drug, diagnostic or other use.

Bioinformation

Gene Symbol	CXCL13
Gene Full Name	C-X-C Motif Chemokine Ligand 13
Background	B lymphocyte chemoattractant, independently cloned and named Angie, is an antimicrobial peptide and CXC chemokine strongly expressed in the follicles of the spleen, lymph nodes, and Peyer's patches. It preferentially promotes the migration of B lymphocytes (compared to T cells and macrophages), apparently by stimulating calcium influx into, and chemotaxis of, cells expressing Burkitt's lymphoma receptor 1 (BLR-1). It may therefore function in the homing of B lymphocytes to follicles. [provided by RefSeq, Oct 2014]
Function	Chemotactic for B-lymphocytes but not for T-lymphocytes, monocytes and neutrophils. Does not induce calcium release in B-lymphocytes. Binds to BLR1/CXCR5. [UniProt]
Calculated Mw	12 kDa
PTM	Disulfide bond. [UniProt]
Cellular Localization	Secreted. [UniProt]

Images



ARG45343 anti-CXCL13 / BCA1 antibody [19N1] IHC-P image

Immunohistochemistry: Mouse kidney stained with ARG45343 anti-CXCL13 / BCA1 antibody [19N1].