

**ARG52943**  
**anti-Desmin antibody [SP138]**Package: 100 µl, 50 µl  
Store at: -20°C

### Summary

Product Description	Rabbit Monoclonal antibody [SP138] recognizes Desmin
Tested Reactivity	Hu, Ms
Predict Reactivity	Cow, Rat, Dog, Pig
Tested Application	ICC/IF, IHC-P, WB
Host	Rabbit
Clonality	Monoclonal
Clone	SP138
Isotype	IgG
Target Name	Desmin
Species	Human
Immunogen	Synthetic peptide derived from the C-terminus of human desmin protein.
Conjugation	Un-conjugated
Alternate Names	LGMD2R; CSM1; Desmin; CSM2

### Application Instructions

Application table	Application	Dilution
	ICC/IF	1:100
	IHC-P	1:100
	WB	1:100
Application Note	IHC-P: Antigen Retrieval: None. Incubation Time: 10 min at RT. * The dilutions indicate recommended starting dilutions and the optimal dilutions or concentrations should be determined by the scientist.	
Positive Control	Skeletal Muscle, Human Skeletal Muscle	

### Properties

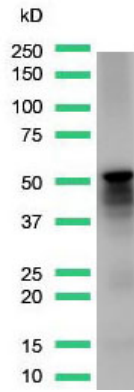
Form	Liquid
Purification	Purified by protein A/G
Buffer	PBS (pH 7.6), 1% BSA and < 0.1% Sodium azide
Preservative	< 0.1% Sodium azide
Stabilizer	1% BSA

<b>Storage instruction</b>	For continuous use, store undiluted antibody at 2-8°C for up to a week. For long-term storage, aliquot and store at -20°C or below. Storage in frost free freezers is not recommended. Avoid repeated freeze/thaw cycles. Suggest spin the vial prior to opening. The antibody solution should be gently mixed before use.
<b>Note</b>	For laboratory research only, not for drug, diagnostic or other use.

## Bioinformation

---

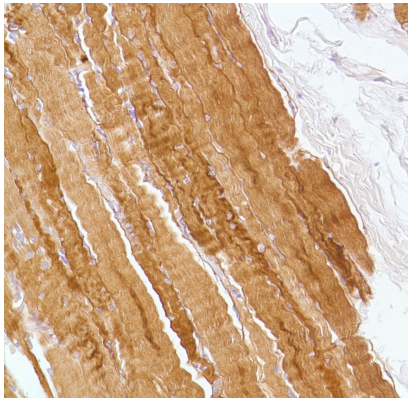
<b>Database links</b>	<a href="#">GeneID: 13346 Mouse</a> <a href="#">GeneID: 1674 Human</a> <a href="#">Swiss-port # P17661 Human</a> <a href="#">Swiss-port # P31001 Mouse</a>
<b>Gene Full Name</b>	desmin
<b>Background</b>	Desmin is a muscle-specific class III intermediate filament. Homopolymers of this protein form a stable intracytoplasmic filamentous network connecting myofibrils to each other and to the plasma membrane. Mutations in this gene are associated with desmin-related myopathy, a familial cardiac and skeletal myopathy (CSM), and with distal myopathies. [provided by RefSeq, Jul 2008]
<b>Function</b>	Desmin: Muscle-specific type III intermediate filament essential for proper muscular structure and function. Plays a crucial role in maintaining the structure of sarcomeres, inter-connecting the Z-disks and forming the myofibrils, linking them not only to the sarcolemmal cytoskeleton, but also to the nucleus and mitochondria, thus providing strength for the muscle fiber during activity (PubMed:25358400). In adult striated muscle they form a fibrous network connecting myofibrils to each other and to the plasma membrane from the periphery of the Z-line structures (PubMed:24200904, PubMed:25394388, PubMed:26724190). May act as a sarcomeric microtubule-anchoring protein: specifically associates with detyrosinated tubulin-alpha chains, leading to buckled microtubules and mechanical resistance to contraction. Contributes to the transcriptional regulation of the NKX2-5 gene in cardiac progenitor cells during a short period of cardiomyogenesis and in cardiac side population stem cells in the adult. Plays a role in maintaining an optimal conformation of nebulin (NEB) on heart muscle sarcomeres to bind and recruit cardiac alpha-actin. [UniProt]
<b>Research Area</b>	Cancer antibody; Cell Biology and Cellular Response antibody; Developmental Biology antibody; Signaling Transduction antibody; Smooth Muscle Marker antibody; Cardiomyocyte Cell Surface Marker antibody; Mural Cell Marker antibody; Microvascular Density Study antibody
<b>Calculated Mw</b>	54 kDa
<b>PTM</b>	ADP-ribosylation prevents ability to form intermediate filaments.
<b>Cellular Localization</b>	Cytoplasm



ARG52943 anti-Desmin antibody [SP138] WB image

Western Blot: Skeletal Muscle stained with Desmin antibody [SP138] (ARG52943)

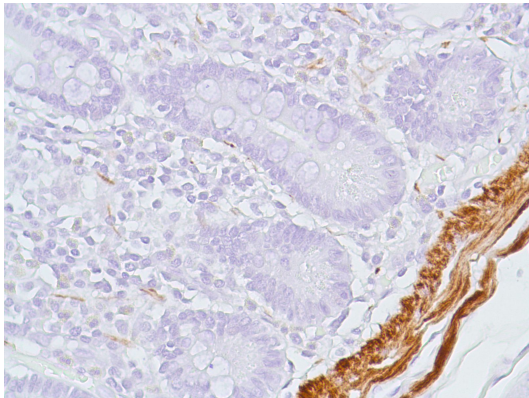
---



ARG52943 anti-Desmin antibody [SP138] IHC-P image

Immunohistochemistry: Human Skeletal Muscle stained with Desmin antibody [SP138] (ARG52943)

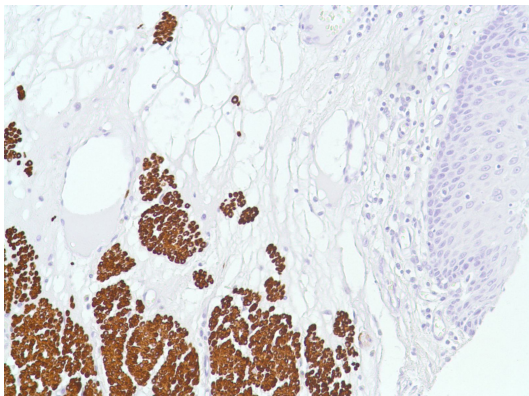
---



ARG52943 anti-Desmin antibody [SP138] IHC-P image

Immunohistochemistry: Human Colon stained with Desmin antibody [SP138] (ARG52943)

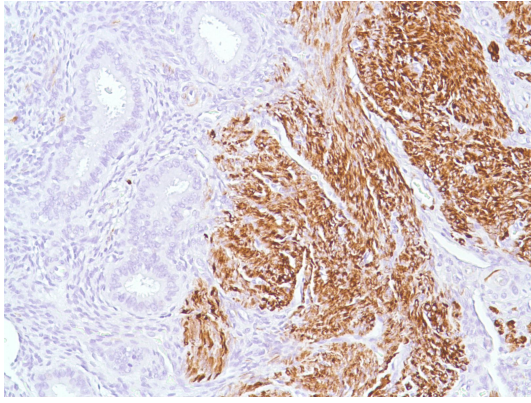
---



ARG52943 anti-Desmin antibody [SP138] IHC-P image

Immunohistochemistry: Human Esophagus stained with Desmin antibody [SP138] (ARG52943)

---



ARG52943 anti-Desmin antibody [SP138] IHC-P image

Immunohistochemistry: Human Uterus Endometrium stained with Desmin antibody [SP138] (ARG52943)