

ARG53801 anti-CD25 antibody [MEM-181] (PE)

Package: 100 tests, 50 tests
Store at: 4°C

Summary

Product Description	PE-conjugated Mouse Monoclonal antibody [MEM-181] recognizes CD25
Tested Reactivity	Hu
Tested Application	FACS
Specificity	The clone MEM-181 reacts with CD25 (Interleukin-2 receptor alpha chain), a 55 kDa type I transmembrane glycoprotein expressed on activated B and T lymphocytes, activated monocytes/macrophages and on CD4+ T lymphocytes (T regulatory cells); it is lost on resting B and T lymphocytes. HLDA VI; WS Code NL N-L024
Host	Mouse
Clonality	Monoclonal
Clone	MEM-181
Isotype	IgG1
Target Name	CD25
Immunogen	PHA-activated peripheral blood leucocytes
Conjugation	PE
Alternate Names	IL-2-RA; IL-2 receptor subunit alpha; CD25; TCGFR; TAC antigen; IL2R; CD antigen CD25; Interleukin-2 receptor subunit alpha; IL-2R subunit alpha; p55; IL2-RA; IDDM10

Application Instructions

Application table	Application	Dilution
	FACS	20 µl / 10 ⁶ cells

Application Note * The dilutions indicate recommended starting dilutions and the optimal dilutions or concentrations should be determined by the scientist.

Properties

Form	Liquid
Purification Note	The purified antibody is conjugated with R-Phycoerythrin (PE) under optimum conditions. The conjugate is purified by size-exclusion chromatography and adjusted for direct use. No reconstitution is necessary.
Buffer	PBS, 15 mM Sodium azide and 0.2% (w/v) high-grade protease free BSA
Preservative	15 mM Sodium azide
Stabilizer	0.2% (w/v) high-grade protease free BSA
Storage instruction	Aliquot and store in the dark at 2-8°C. Keep protected from prolonged exposure to light. Avoid repeated freeze/thaw cycles. Suggest spin the vial prior to opening. The antibody solution should be gently mixed before use.

Note

For laboratory research only, not for drug, diagnostic or other use.

Bioinformation

Database links

[GeneID: 3559 Human](#)

[Swiss-port # P01589 Human](#)

Gene Symbol

IL2RA

Gene Full Name

interleukin 2 receptor, alpha

Background

CD25 (IL2Ralpha, Tac) is a ligand-binding alpha subunit of interleukin 2 receptor (IL2R). Together with beta and gamma subunit CD25 constitutes the high affinity IL2R, whereas CD25 alone serves as the low affinity IL2R. CD25 expression rapidly increases upon T cell activation. The 55 kDa CD25 molecule is enzymatically cleaved and shed from the cell surface as a soluble 45 kDa s-Tac, whose concentration in serum can be used as a marker of T cell activation. Expression of CD25 indicates the neoplastic phenotype of mast cells. Humanized anti CD25 antibodies represent a useful tool to reduce the incidence of allograft rejection as well as the severity of graft versus host reaction, and radioimmunoconjugates of anti-CD25 antibodies can be used against CD25 expressing lymphomas.

Function

Receptor for interleukin-2. [UniProt]

Highlight

Related Antibody Duos and Panels:

[ARG30307 Pre-B Cell Marker Antibody Panel \(CD19, CD25, CD38, CD40, CD45\) \(FACS\)](#)

Related products:

[CD25 antibodies](#); [CD25 ELISA Kits](#); [CD25 Duos / Panels](#); [Anti-Mouse IgG secondary antibodies](#);

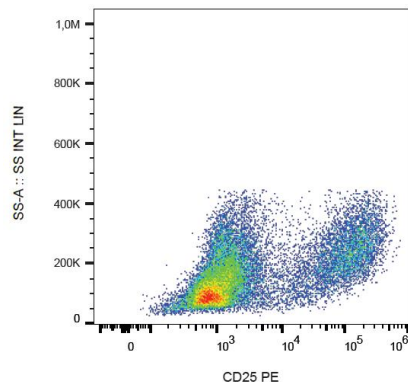
Research Area

Immune System antibody; Pre-B Cell Marker antibody

Calculated Mw

31 kDa

Images



ARG53801 anti-CD25 antibody [MEM-181] (PE) FACS image

Flow Cytometry: PHA-stimulated Human PBMC stained with ARG53801 anti-CD25 antibody [MEM-181] (PE).