

ARG53845 anti-CD40 antibody [HI40a] (PE)

Package: 100 tests
Store at: 4°C

Summary

Product Description	PE-conjugated Mouse Monoclonal antibody [HI40a] recognizes CD40
Tested Reactivity	Hu
Tested Application	FACS
Specificity	The clone HI40a recognizes CD40 (BP50), a 48 kDa type I single chain transmembrane glycoprotein expressed on normal and neoplastic B cells, but not on terminally differentiated plasma cells. CD40 antigen is also present on Hodgkin's and Reed-Sternberg cells, follicular dendritic cells, some macrophages, basal epithelial cells and endothelial cells.
Host	Mouse
Clonality	Monoclonal
Clone	HI40a
Isotype	IgG1
Target Name	CD40
Species	Human
Immunogen	Human CD40a
Conjugation	PE
Alternate Names	CDw40; CD antigen CD40; Tumor necrosis factor receptor superfamily member 5; Bp50; CD40L receptor; CDW40; TNFRSF5; p50; B-cell surface antigen CD40

Application Instructions

Application table	Application	Dilution
	FACS	20 µl / 10 ⁶ cells

Application Note * The dilutions indicate recommended starting dilutions and the optimal dilutions or concentrations should be determined by the scientist.

Properties

Form	Liquid
Purification Note	The purified antibody is conjugated with R-Phycoerythrin (PE) under optimum conditions. The conjugate is purified by size-exclusion chromatography and adjusted for direct use. No reconstitution is necessary.
Buffer	PBS, 15 mM Sodium azide and 0.2% (w/v) high-grade protease free BSA
Preservative	15 mM Sodium azide
Stabilizer	0.2% (w/v) high-grade protease free BSA
Storage instruction	Aliquot and store in the dark at 2-8°C. Keep protected from prolonged exposure to light. Avoid repeated freeze/thaw cycles. Suggest spin the vial prior to opening. The antibody solution should be

gently mixed before use.

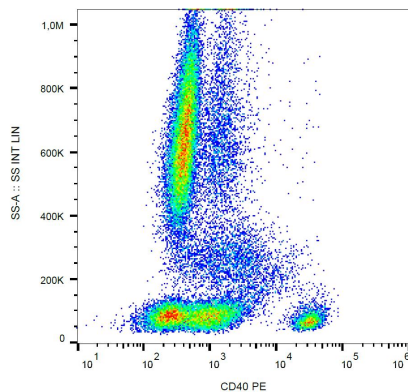
Note

For laboratory research only, not for drug, diagnostic or other use.

Bioinformation

Database links	GeneID: 958 Human Swiss-port # P25942 Human
Gene Symbol	CD40
Gene Full Name	CD40 molecule, TNF receptor superfamily member 5
Background	CD40 is a costimulatory molecule of the TNF receptor superfamily and is expressed on many cell types, such as B cells, monocytes/macrophages, dendritic cells, endothelial cells, fibroblasts or vascular smooth muscle cells. Interaction of CD40 and its ligand CD154 (CD40L) is required for the generation of antibody responses to T-dependent antigens as well as for the development of germinal centers and memory B cells. In monocytes/macrophages CD40 engagement induces production of pro-inflammatory cytokines and chemokines. CD40-CD154 interactions are also critical for development of CD4 T cell-dependent effector functions. CD40 links innate and adaptive immune responses to bacterial stimuli and serves as an important regulator affecting functions of other costimulatory molecules.
Function	Receptor for TNFSF5/CD40LG. Transduces TRAF6- and MAP3K8-mediated signals that activate ERK in macrophages and B cells, leading to induction of immunoglobulin secretion. [UniProt]
Research Area	Cell Biology and Cellular Response antibody; Developmental Biology antibody; Immune System antibody; Pro-B Cell Marker antibody; Pre-B Cell Marker antibody
Calculated Mw	31 kDa

Images



ARG53845 anti-CD40 antibody [HI40a] (PE) FACS image

Flow Cytometry: Human peripheral blood cells stained with ARG53845 anti-CD40 antibody [HI40a] (PE).