

## ARG53866 anti-CD48 antibody [MEM-102] (PE)

Package: 100 tests  
Store at: 4°C

### Summary

Product Description	PE-conjugated Mouse Monoclonal antibody [MEM-102] recognizes CD48
Tested Reactivity	Hu, NHuPrm
Tested Application	FACS
Specificity	The clone MEM-102 reacts with CD48 antigen (Blast-1), a 40-47 kDa GPI-anchored membrane protein (immunoglobulin supergene family) widely expressed on hematopoietic cells; it is negative on granulocytes, platelets and erythrocytes. HLDA V; WS Code AS S014
Host	Mouse
Clonality	Monoclonal
Clone	MEM-102
Isotype	IgG1
Target Name	CD48
Species	Human
Immunogen	Raji human Burkitt's lymphoma cell line
Conjugation	PE
Alternate Names	Leukocyte antigen MEM-102; B-lymphocyte activation marker BLAST-1; CD48 antigen; BCM1 surface antigen; CD antigen CD48; TCT.1; BLAST1; BCM1; MEM-102; mCD48; Signaling lymphocytic activation molecule 2; BLAST; hCD48; SLAMF2; SLAM family member 2

### Application Instructions

Application table	Application	Dilution
	FACS	20 µl / 10 <sup>6</sup> cells
Application Note	* The dilutions indicate recommended starting dilutions and the optimal dilutions or concentrations should be determined by the scientist.	

### Properties

Form	Liquid
Purification Note	The purified antibody is conjugated with R-Phycoerythrin (PE) under optimum conditions. The conjugate is purified by size-exclusion chromatography and adjusted for direct use. No reconstitution is necessary.
Buffer	PBS, 15 mM Sodium azide and 0.2% (w/v) high-grade protease free BSA
Preservative	15 mM Sodium azide
Stabilizer	0.2% (w/v) high-grade protease free BSA
Storage instruction	Aliquot and store in the dark at 2-8°C. Keep protected from prolonged exposure to light. Avoid

repeated freeze/thaw cycles. Suggest spin the vial prior to opening. The antibody solution should be gently mixed before use.

Note

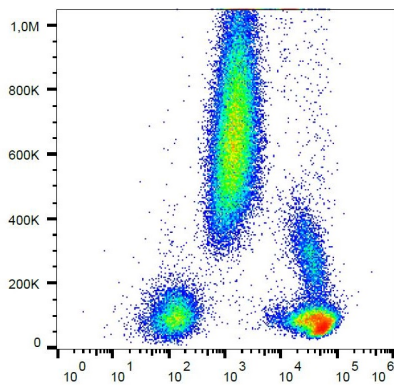
For laboratory research only, not for drug, diagnostic or other use.

## Bioinformation

---

Database links	<a href="#">GeneID: 962 Human</a> <a href="#">Swiss-port # P09326 Human</a>
Gene Symbol	CD48
Gene Full Name	CD48 molecule
Background	CD48 (Blast-1) belongs to the CD2 subset of the Ig superfamily, which includes CD2, CD2F-10, CD58, CD84, CD150, CD229, CD244 and others. These molecules bind to the same or another members of their family, thus mediate homotypic or heterotypic adhesion. CD48 is a GPI-anchored protein broadly expressed on hematopoietic cells and serves as a high affinity ligand for 2B4 and low affinity ligand for CD2. 2B4-CD48 interaction among NK cells and NK-T cells regulates cell proliferation. Signaling through CD48 results in eosinophil activation and CD48 expression is increased in several infectious diseases.
Function	Ligand for CD2. Might facilitate interaction between activated lymphocytes. Probably involved in regulating T-cell activation. [UniProt]
Research Area	Immune System antibody
Calculated Mw	28 kDa

## Images



ARG53866 anti-CD48 antibody [MEM-102] (PE) FACS image

Flow Cytometry: Human peripheral blood stained with ARG53866 anti-CD48 antibody [MEM-102] (PE).