

ARG54874
anti-PFKP antibodyPackage: 100 µl
Store at: -20°C

Summary

Product Description	Rabbit Polyclonal antibody recognizes PFKP
Tested Reactivity	Hu
Tested Application	IHC-P, WB
Host	Rabbit
Clonality	Polyclonal
Isotype	IgG
Target Name	PFKP
Species	Human
Immunogen	KLH-conjugated synthetic peptide corresponding to aa. 754-784 (C-terminus) of Human PFKP.
Conjugation	Un-conjugated
Alternate Names	Phosphohexokinase; PFK-C; EC 2.7.1.11; 6-phosphofructokinase type C; Phosphofructo-1-kinase isozyme C; ATP-PFK; ATP-dependent 6-phosphofructokinase, platelet type; PFK-P; PFKF

Application Instructions

Application table	Application	Dilution
	IHC-P	Assay-dependent
	WB	1:1000
Application Note	* The dilutions indicate recommended starting dilutions and the optimal dilutions or concentrations should be determined by the scientist.	
Positive Control	T47D	

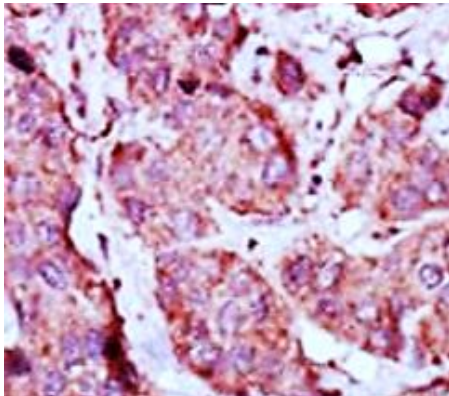
Properties

Form	Liquid
Purification	Purification with Protein G.
Buffer	PBS and 0.09% (W/V) Sodium azide
Preservative	0.09% (W/V) Sodium azide
Storage instruction	For continuous use, store undiluted antibody at 2-8°C for up to a week. For long-term storage, aliquot and store at -20°C or below. Storage in frost free freezers is not recommended. Avoid repeated freeze/thaw cycles. Suggest spin the vial prior to opening. The antibody solution should be gently mixed before use.
Note	For laboratory research only, not for drug, diagnostic or other use.

Bioinformation

Database links	GeneID: 5214 Human Swiss-port # Q01813 Human
Gene Symbol	PFKP
Gene Full Name	phosphofructokinase, platelet
Background	The PFKP gene encodes the platelet isoform of phosphofructokinase (PFK) (ATP:D-fructose-6-phosphate-1-phosphotransferase, EC 2.7.1.11). PFK catalyzes the irreversible conversion of fructose-6-phosphate to fructose-1,6-bisphosphate and is a key regulatory enzyme in glycolysis. The PFKP gene, which maps to chromosome 10p, is also expressed in fibroblasts. See also the muscle (PFKM; MIM 610681) and liver (PFKL; MIM 171860) isoforms of phosphofructokinase, which map to chromosomes 12q13 and 21q22, respectively. Vora (1981) [PubMed 6451249] determined that full tetrameric phosphofructokinase enzyme expressed in platelets can be composed of subunits P4, P3L, and P2L2.[supplied by OMIM, Mar 2008]
Function	Catalyzes the phosphorylation of D-fructose 6-phosphate to fructose 1,6-bisphosphate by ATP, the first committing step of glycolysis. [UniProt]
Highlight	Related products: Anti-Rabbit IgG secondary antibodies; Related news: Vascular development is regulated by FGF-dependent metabolic control
Research Area	Cancer antibody; Metabolism antibody; Signaling Transduction antibody
Calculated Mw	86 kDa
PTM	GlcNAcylation decreases enzyme activity.
Cellular Localization	Cytoplasm {ECO:0000255 HAMAP-Rule:MF_03184}.

Images



ARG54874 anti-PFKP antibody IHC-P image

Immunohistochemistry: Formalin-fixed and paraffin-embedded Human breast carcinoma tissue stained with ARG54874 anti-PFKP antibody.

ARG54874 anti-PFKP antibody WB image

Western blot: 35 µg of T47D cell lysate stained with ARG54874 anti-PFKP antibody.

