

## ARG54960 anti-CD38 antibody

Package: 100 µl  
Store at: -20°C

### Summary

Product Description	Rabbit Polyclonal antibody recognizes CD38
Tested Reactivity	Hu
Predict Reactivity	Mk
Tested Application	FACS, ICC/IF, IHC-P, WB
Host	Rabbit
Clonality	Polyclonal
Isotype	IgG
Target Name	CD38
Species	Human
Immunogen	KLH-conjugated synthetic peptide corresponding to aa. 241-270 (C-terminus) of Human CD38.
Conjugation	Un-conjugated
Alternate Names	cADPr hydrolase 1; ADPRC 1; EC 3.2.2.6; 2'-phospho-ADP-ribosyl cyclase/2'-phospho-cyclic-ADP-ribose transferase; Cyclic ADP-ribose hydrolase 1; ADPRC1; EC 2.4.99.20; ADP-ribosyl cyclase 1; 2'-phospho-cyclic-ADP-ribose transferase; CD antigen CD38; T10; 2'-phospho-ADP-ribosyl cyclase; ADP-ribosyl cyclase/cyclic ADP-ribose hydrolase 1

### Application Instructions

Application table	Application	Dilution
	FACS	1:10 - 1:50
	ICC/IF	1:10 - 1:50
	IHC-P	Assay-dependent
	WB	1:1000
Application Note	* The dilutions indicate recommended starting dilutions and the optimal dilutions or concentrations should be determined by the scientist.	
Positive Control	RPMI8226	

### Properties

Form	Liquid
Purification	This antibody is prepared by Saturated Ammonium Sulfate (SAS) precipitation followed by dialysis against PBS.
Buffer	PBS and 0.09% (W/V) Sodium azide
Preservative	0.09% (W/V) Sodium azide

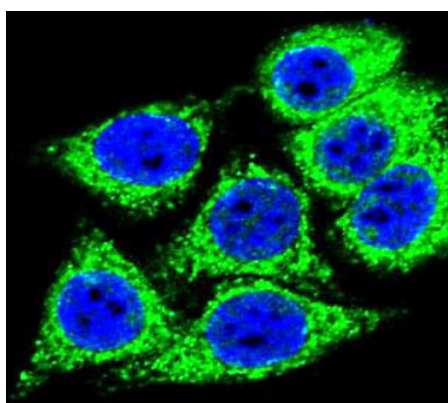
Storage instruction	For continuous use, store undiluted antibody at 2-8°C for up to a week. For long-term storage, aliquot and store at -20°C or below. Storage in frost free freezers is not recommended. Avoid repeated freeze/thaw cycles. Suggest spin the vial prior to opening. The antibody solution should be gently mixed before use.
Note	For laboratory research only, not for drug, diagnostic or other use.

## Bioinformation

---

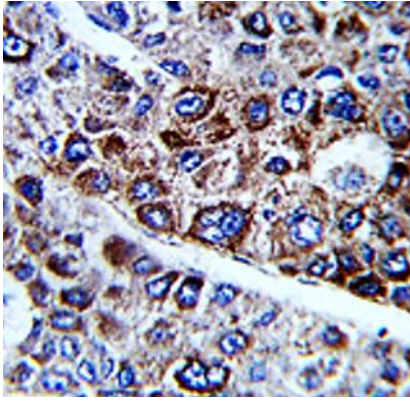
Database links	<a href="#">GeneID: 952 Human</a> <a href="#">Swiss-port # P28907 Human</a>
Gene Symbol	CD38
Gene Full Name	CD38 molecule
Background	CD38 is a novel multifunctional ectoenzyme widely expressed in cells and tissues especially in leukocytes. CD38 also functions in cell adhesion, signal transduction and calcium signaling. [provided by RefSeq, Jul 2008]
Function	Synthesizes the second messengers cyclic ADP-ribose and nicotinate-adenine dinucleotide phosphate, the former a second messenger for glucose-induced insulin secretion. Also has cADPr hydrolase activity. Also moonlights as a receptor in cells of the immune system. [UniProt]
Highlight	Related products: <a href="#">CD38 antibodies</a> ; <a href="#">CD38 Duos / Panels</a> ; <a href="#">Anti-Rabbit IgG secondary antibodies</a> ; Related news: <a href="#">Lymphoma</a>
Research Area	Cancer antibody; Developmental Biology antibody; Immune System antibody; Metabolism antibody; Pro-B Cell Marker antibody; Pre-B Cell Marker antibody
Calculated Mw	34 kDa
Cellular Localization	Membrane; Single-pass type II membrane protein

## Images



ARG54960 anti-CD38 antibody ICC/IF image

Immunofluorescence: HeLa cells stained with ARG54960 anti-CD38 antibody (green). DAPI (blue) for nuclear staining.



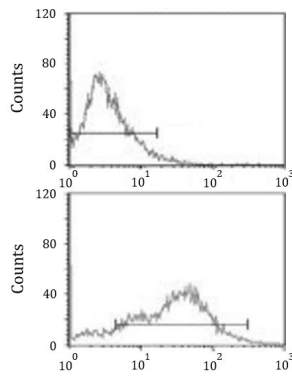
ARG54960 anti-CD38 antibody IHC-P image

Immunohistochemistry: Formalin-fixed and paraffin-embedded Human hepatocarcinoma stained with ARG54960 anti-CD38 antibody.



ARG54960 anti-CD38 antibody WB image

Western blot: 20 µg of RPMI8226 cell lysate stained with ARG54960 anti-CD38 antibody at 1:1000 dilution.



ARG54960 anti-CD38 antibody FACS image

Flow Cytometry: HepG2 cells stained with ARG54960 anti-CD38 antibody (bottom histogram) or without primary antibody control (top histogram), followed by incubation with FITC labelled secondary antibody.