

## ARG55710 anti-IL13 Receptor alpha 1 antibody

Package: 100 µl  
Store at: -20°C

### Summary

Product Description	Rabbit Polyclonal antibody recognizes IL13 Receptor alpha 1
Tested Reactivity	Hu
Tested Application	WB
Host	Rabbit
Clonality	Polyclonal
Isotype	IgG
Target Name	IL13 Receptor alpha 1
Species	Human
Immunogen	KLH-conjugated synthetic peptide corresponding to aa. 207-238 (C-terminus) of Human IL13 Receptor alpha 1.
Conjugation	Un-conjugated
Alternate Names	CD antigen CD213a1; Interleukin-13 receptor subunit alpha-1; CD213A1; IL-13R-alpha-1; CT19; IL-13R subunit alpha-1; IL-13Ra; IL-13 receptor subunit alpha-1; IL-13RA1; Cancer/testis antigen 19; NR4

### Application Instructions

Application table	Application	Dilution
	WB	1:1000
Application Note	* The dilutions indicate recommended starting dilutions and the optimal dilutions or concentrations should be determined by the scientist.	
Positive Control	Raji	

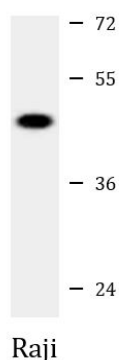
### Properties

Form	Liquid
Purification	Purification with Protein A and immunogen peptide.
Buffer	PBS and 0.09% (W/V) sodium azide.
Preservative	0.09% (W/V) sodium azide.
Storage instruction	For continuous use, store undiluted antibody at 2-8°C for up to a week. For long-term storage, aliquot and store at -20°C or below. Storage in frost free freezers is not recommended. Avoid repeated freeze/thaw cycles. Suggest spin the vial prior to opening. The antibody solution should be gently mixed before use.
Note	For laboratory research only, not for drug, diagnostic or other use.

### Bioinformation

Database links	<a href="#">GeneID: 3597 Human</a> <a href="#">Swiss-port # P78552 Human</a>
Gene Symbol	IL13RA1
Gene Full Name	interleukin 13 receptor, alpha 1
Background	The protein encoded by this gene is a subunit of the interleukin 13 receptor. This subunit forms a receptor complex with IL4 receptor alpha, a subunit shared by IL13 and IL4 receptors. This subunit serves as a primary IL13-binding subunit of the IL13 receptor, and may also be a component of IL4 receptors. This protein has been shown to bind tyrosine kinase TYK2, and thus may mediate the signaling processes that lead to the activation of JAK1, STAT3 and STAT6 induced by IL13 and IL4. [provided by RefSeq, Jul 2008]
Function	Binds with low affinity to interleukin-13 (IL13). Together with IL4RA can form a functional receptor for IL13. Also serves as an alternate accessory protein to the common cytokine receptor gamma chain for interleukin-4 (IL4) signaling, but cannot replace the function of IL2RG in allowing enhanced interleukin-2 (IL2) binding activity. [UniProt]
Calculated Mw	49 kDa
Cellular Localization	Membrane; Single-pass type I membrane protein

## Images



ARG55710 anti-IL13 Receptor alpha 1 antibody WB image

Western blot: 35 µg of Raji cell lysate stained with ARG55710 anti-IL13 Receptor alpha 1 antibody at 1:1000 dilution.