

ARG55932 anti-alpha Fetoprotein antibody [C3]

Package: 50 µg
Store at: -20°C

Summary

Product Description	Mouse Monoclonal antibody [C3] recognizes alpha Fetoprotein
Tested Reactivity	Hu
Species Does Not React With	Ms, Rat, Cat, Cow
Tested Application	IHC-P
Specificity	AFP antibody [C3] is highly specific and shows no cross-reaction with other oncofetal antigens or serum albumin.
Host	Mouse
Clonality	Monoclonal
Clone	C3
Isotype	IgG2a, kappa
Target Name	alpha Fetoprotein
Species	Human
Immunogen	Alpha fetoprotein purified from serum of a hepatoma patient.
Conjugation	Un-conjugated
Alternate Names	Alpha-fetoprotein; HPAFP; FETA; Alpha-fetoglobulin; AFPD; Alpha-1-fetoprotein

Application Instructions

Application table	Application	Dilution
	IHC-P	1 - 2 µg/ml

Application Note * The dilutions indicate recommended starting dilutions and the optimal dilutions or concentrations should be determined by the scientist.

Properties

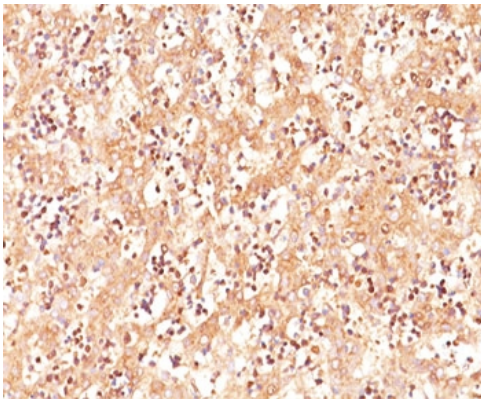
Form	Liquid
Purification	Purification with Protein G.
Buffer	PBS (pH 7.4), 0.05% Sodium azide and 0.1 mg/ml BSA
Preservative	0.05% Sodium azide
Stabilizer	0.1 mg/ml BSA
Concentration	0.2 mg/ml
Storage instruction	For continuous use, store undiluted antibody at 2-8°C for up to a week. For long-term storage, aliquot and store at -20°C or below. Storage in frost free freezers is not recommended. Avoid repeated freeze/thaw cycles. Suggest spin the vial prior to opening. The antibody solution should be gently mixed before use.

Note For laboratory research only, not for drug, diagnostic or other use.

Bioinformation

Database links	GeneID: 174 Human Swiss-port # P02771 Human
Gene Symbol	AFP
Gene Full Name	alpha-fetoprotein
Background	This gene encodes alpha-fetoprotein, a major plasma protein produced by the yolk sac and the liver during fetal life. Alpha-fetoprotein expression in adults is often associated with hepatoma or teratoma. However, hereditary persistence of alpha-fetoprotein may also be found in individuals with no obvious pathology. The protein is thought to be the fetal counterpart of serum albumin, and the alpha-fetoprotein and albumin genes are present in tandem in the same transcriptional orientation on chromosome 4. Alpha-fetoprotein is found in monomeric as well as dimeric and trimeric forms, and binds copper, nickel, fatty acids and bilirubin. The level of alpha-fetoprotein in amniotic fluid is used to measure renal loss of protein to screen for spina bifida and anencephaly. [provided by RefSeq, Jul 2008]
Function	Binds copper, nickel, and fatty acids as well as, and bilirubin less well than, serum albumin. Only a small percentage (less than 2%) of the human AFP shows estrogen-binding properties. [UniProt]
Calculated Mw	69 kDa
PTM	Independent studies suggest heterogeneity of the N-terminal sequence of the mature protein and of the cleavage site of the signal sequence. Sulfated.
Cellular Localization	Cytoplasmic

Images



ARG55932 anti-alpha Fetoprotein antibody [C3] IHC-P image

Immunohistochemistry: Human fetal liver stained with ARG55932 anti-alpha Fetoprotein antibody [C3].