

ARG55949 anti-ECM1 / Secretory Component antibody [SC05]

Package: 50 µg
Store at: -20°C

Summary

Product Description	Mouse Monoclonal antibody [SC05] recognizes ECM1 / Secretory Component
Tested Reactivity	Hu, Rat
Tested Application	FACS, ICC/IF, IHC-P
Host	Mouse
Clonality	Monoclonal
Clone	SC05
Isotype	IgG1, kappa
Target Name	ECM1 / Secretory Component
Species	Human
Immunogen	Secretory component protein isolated from Human colostrum.
Conjugation	Un-conjugated
Alternate Names	URBWD; Extracellular matrix protein 1; Secretory component p85

Application Instructions

Application table	Application	Dilution
	FACS	0.5 - 1 µg/10 ⁶ cells
	ICC/IF	1 - 2 µg/ml
	IHC-P	0.5 - 1 µg/ml
Application Note	IHC-P: Antigen Retrieval: Boil tissue section in 10 mM Citrate buffer (pH 6.0) for 10-20 min, followed by cooling at RT for 20 min. * The dilutions indicate recommended starting dilutions and the optimal dilutions or concentrations should be determined by the scientist.	

Properties

Form	Liquid
Purification	Purification with Protein G.
Buffer	PBS (pH 7.4), 0.05% Sodium azide and 0.1 mg/ml BSA
Preservative	0.05% Sodium azide
Stabilizer	0.1 mg/ml BSA
Concentration	0.2 mg/ml
Storage instruction	For continuous use, store undiluted antibody at 2-8°C for up to a week. For long-term storage, aliquot and store at -20°C or below. Storage in frost free freezers is not recommended. Avoid repeated freeze/thaw cycles. Suggest spin the vial prior to opening. The antibody solution should be gently mixed

before use.

Note

For laboratory research only, not for drug, diagnostic or other use.

Bioinformation

Database links

[GeneID: 116662 Rat](#)

[GeneID: 1893 Human](#)

[Swiss-port # Q16610 Human](#)

[Swiss-port # Q62894 Rat](#)

Gene Symbol

ECM1

Gene Full Name

extracellular matrix protein 1

Background

This gene encodes a soluble protein that is involved in endochondral bone formation, angiogenesis, and tumor biology. It also interacts with a variety of extracellular and structural proteins, contributing to the maintenance of skin integrity and homeostasis. Mutations in this gene are associated with lipoid proteinosis disorder (also known as hyalinosis cutis et mucosae or Urbach-Wiethe disease) that is characterized by generalized thickening of skin, mucosae and certain viscera. Alternatively spliced transcript variants encoding distinct isoforms have been described for this gene. [provided by RefSeq, Feb 2011]

Function

Involved in endochondral bone formation as negative regulator of bone mineralization. Stimulates the proliferation of endothelial cells and promotes angiogenesis. Inhibits MMP9 proteolytic activity. [UniProt]

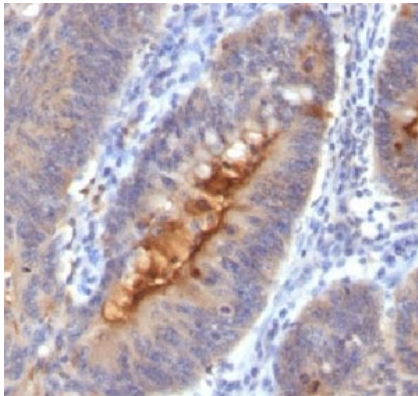
Calculated Mw

61 kDa

Cellular Localization

Cell surface and cytoplasmic

Images



ARG55949 anti-ECM1 / Secretory Component antibody [SC05] IHC-P image

Immunohistochemistry: Human colon carcinoma stained with ARG55949 anti-ECM1 / Secretory Component antibody [SC05].