

ARG56134 anti-alpha Fetoprotein antibody

Package: 50 µg
Store at: -20°C

Summary

Product Description	Rabbit Polyclonal antibody recognizes alpha Fetoprotein
Tested Reactivity	Hu, Ms, Rat
Tested Application	ICC/IF, IHC-P, WB
Host	Rabbit
Clonality	Polyclonal
Isotype	IgG
Target Name	alpha Fetoprotein
Species	Human
Immunogen	Synthetic peptide (14 aa) within aa. 340-390 of Human alpha Fetoprotein.
Conjugation	Un-conjugated
Alternate Names	Alpha-fetoprotein; HPAFP; FETA; Alpha-fetoglobulin; AFPD; Alpha-1-fetoprotein

Application Instructions

Application table	Application	Dilution
	ICC/IF	20 µg/ml
	IHC-P	10 µg/ml
	WB	1 µg/ml
Application Note	* The dilutions indicate recommended starting dilutions and the optimal dilutions or concentrations should be determined by the scientist.	
Positive Control	Human liver tissue lysate	

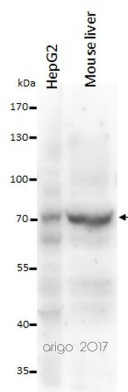
Properties

Form	Liquid
Purification	Affinity purification with immunogen.
Buffer	PBS and 0.02% Sodium azide
Preservative	0.02% Sodium azide
Concentration	1 mg/ml
Storage instruction	For continuous use, store undiluted antibody at 2-8°C for up to a week. For long-term storage, aliquot and store at -20°C or below. Storage in frost free freezers is not recommended. Avoid repeated freeze/thaw cycles. Suggest spin the vial prior to opening. The antibody solution should be gently mixed before use.
Note	For laboratory research only, not for drug, diagnostic or other use.

Bioinformation

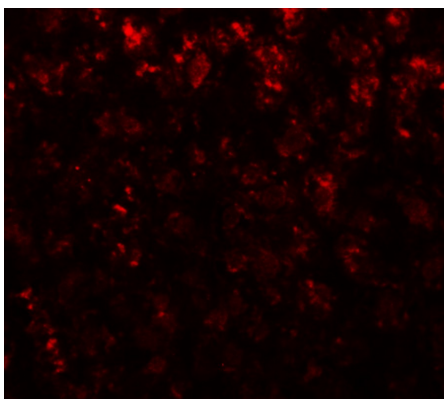
Database links	GeneID: 11576 Mouse GeneID: 174 Human Swiss-port # P02771 Human Swiss-port # P02772 Mouse
Gene Symbol	AFP
Gene Full Name	alpha-fetoprotein
Background	This gene encodes alpha-fetoprotein, a major plasma protein produced by the yolk sac and the liver during fetal life. Alpha-fetoprotein expression in adults is often associated with hepatoma or teratoma. However, hereditary persistence of alpha-fetoprotein may also be found in individuals with no obvious pathology. The protein is thought to be the fetal counterpart of serum albumin, and the alpha-fetoprotein and albumin genes are present in tandem in the same transcriptional orientation on chromosome 4. Alpha-fetoprotein is found in monomeric as well as dimeric and trimeric forms, and binds copper, nickel, fatty acids and bilirubin. The level of alpha-fetoprotein in amniotic fluid is used to measure renal loss of protein to screen for spina bifida and anencephaly. [provided by RefSeq, Jul 2008]
Function	Binds copper, nickel, and fatty acids as well as, and bilirubin less well than, serum albumin. Only a small percentage (less than 2%) of the human AFP shows estrogen-binding properties. [UniProt]
Calculated Mw	69 kDa
PTM	Independent studies suggest heterogeneity of the N-terminal sequence of the mature protein and of the cleavage site of the signal sequence. Sulfated.

Images



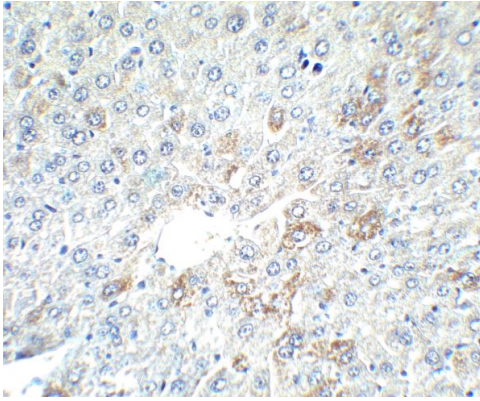
ARG56134 anti-alpha Fetoprotein antibody WB image

Western blot: 20 μ l of HepG2 and Mouse liver lysates stained with ARG56134 anti-alpha Fetoprotein antibody at 1 μ g/ml dilution.



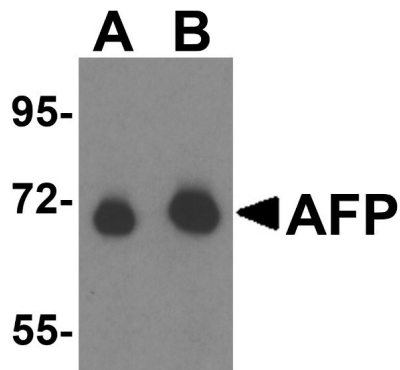
ARG56134 anti-alpha Fetoprotein antibody ICC/IF image

Immunofluorescence: Rat liver tissue stained with ARG56134 anti-alpha Fetoprotein antibody at 20 μ g/ml dilution.



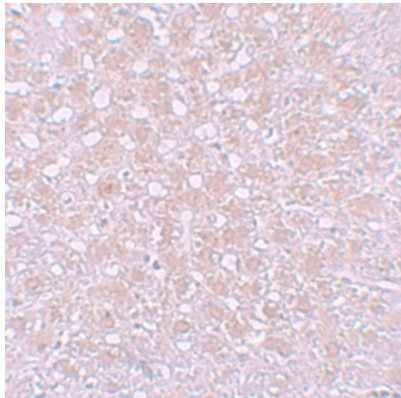
ARG56134 anti-alpha Fetoprotein antibody IHC-P image

Immunohistochemistry: Mouse liver tissue stained with ARG56134 anti-alpha Fetoprotein antibody at 2.5 µg/ml dilution.



ARG56134 anti-alpha Fetoprotein antibody WB image

Western blot: fetal Human liver tissue lysate stained with ARG56134 anti-alpha Fetoprotein antibody at (A) 1 µg/ml and (B) 2 µg/ml dilution.



ARG56134 anti-alpha Fetoprotein antibody IHC-P image

Immunohistochemistry: Rat liver tissue stained with ARG56134 anti-alpha Fetoprotein antibody at 10 µg/ml dilution.