

ARG56241 anti-CALCB antibody

Package: 100 µl, 50 µl
Store at: -20°C

Summary

Product Description	Rabbit Polyclonal antibody recognizes CALCB
Tested Reactivity	Hu, Ms, Rat
Tested Application	IHC-P, WB
Host	Rabbit
Clonality	Polyclonal
Isotype	IgG
Target Name	CALCB
Species	Human
Immunogen	Recombinant protein of Human CALCB
Conjugation	Un-conjugated
Alternate Names	Beta-CGRP; Calcitonin gene-related peptide 2; Calcitonin gene-related peptide II; CALC2; Beta-type CGRP; CGRP-II; CGRP2

Application Instructions

Application table	Application	Dilution
	IHC-P	1:50 - 1:100
	WB	1:500 - 1:2000
Application Note	* The dilutions indicate recommended starting dilutions and the optimal dilutions or concentrations should be determined by the scientist.	

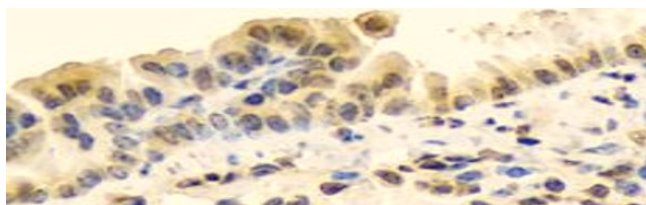
Properties

Form	Liquid
Purification	Affinity purification with immunogen.
Buffer	PBS (pH 7.3), 0.02% Sodium azide and 50% Glycerol.
Preservative	0.02% sodium azide
Stabilizer	50% Glycerol
Storage instruction	For continuous use, store undiluted antibody at 2-8°C for up to a week. For long-term storage, aliquot and store at -20°C. Storage in frost free freezers is not recommended. Avoid repeated freeze/thaw cycles. Suggest spin the vial prior to opening. The antibody solution should be gently mixed before use.
Note	For laboratory research only, not for drug, diagnostic or other use.

Bioinformation

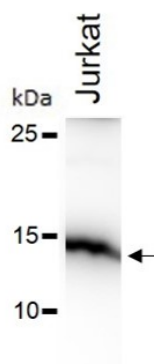
Database links	GeneID: 171519 Rat
	GeneID: 797 Human
	Swiss-port # P10092 Human
	Swiss-port # P10093 Rat
Gene Symbol	CALCB
Gene Full Name	calcitonin-related polypeptide beta
Function	CGRP induces vasodilation. It dilates a variety of vessels including the coronary, cerebral and systemic vasculature. Its abundance in the CNS also points toward a neurotransmitter or neuromodulator role. [UniProt]
Calculated Mw	14 kDa

Images



ARG56241 anti-CALCB antibody IHC-P image

Immunohistochemistry: Paraffin-embedded Mouse lung stained with ARG56241 anti-CALCB antibody at 1:100 dilution



ARG56241 anti-CALCB antibody WB image

Western blot: Jurkat cell lysates stained with ARG56241 anti-CALCB antibody at 1:500 dilution.