

## ARG56317 anti-GLRX3 antibody

Package: 100 µl  
Store at: -20°C

### Summary

Product Description	Rabbit Polyclonal antibody recognizes GLRX3
Tested Reactivity	Hu
Tested Application	IP, WB
Host	Rabbit
Clonality	Polyclonal
Isotype	IgG
Target Name	GLRX3
Species	Human
Immunogen	Recombinant protein of Human GLRX3
Conjugation	Un-conjugated
Alternate Names	GLRX4; TXNL2; Thioredoxin-like protein 2; PKCq-interacting protein; GRX3; TXNL3; PICOT; Glutaredoxin-3; GRX4; PKC-theta-interacting protein; PKC-interacting cousin of thioredoxin

### Application Instructions

Application table	Application	Dilution
	IP	
	WB	1:500 - 1:2000
Application Note	* The dilutions indicate recommended starting dilutions and the optimal dilutions or concentrations should be determined by the scientist.	
Positive Control	HeLa	

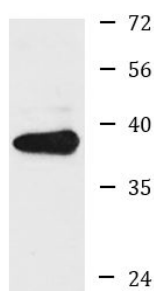
### Properties

Form	Liquid
Purification	Affinity purification with immunogen.
Buffer	PBS (pH 7.3), 0.02% Sodium azide and 50% Glycerol.
Preservative	0.02% Sodium azide
Stabilizer	50% Glycerol
Storage instruction	For continuous use, store undiluted antibody at 2-8°C for up to a week. For long-term storage, aliquot and store at -20°C. Storage in frost free freezers is not recommended. Avoid repeated freeze/thaw cycles. Suggest spin the vial prior to opening. The antibody solution should be gently mixed before use.
Note	For laboratory research only, not for drug, diagnostic or other use.

## Bioinformation

Database links	<a href="#">GeneID: 10539 Human</a> <a href="#">Swiss-port # O76003 Human</a>
Gene Symbol	GLRX3
Gene Full Name	glutaredoxin 3
Background	This gene encodes a member of the glutaredoxin family. Glutaredoxins are oxidoreductase enzymes that reduce a variety of substrates using glutathione as a cofactor. The encoded protein binds to and modulates the function of protein kinase C theta. The encoded protein may also inhibit apoptosis and play a role in cellular growth, and the expression of this gene may be a marker for cancer. Pseudogenes of this gene are located on the short arm of chromosomes 6 and 9. Alternatively spliced transcript variants have been observed for this gene. [provided by RefSeq, Dec 2010]
Function	Critical negative regulator of cardiac hypertrophy and a positive inotropic regulator (By similarity). Crucial regulator of cellular iron homeostasis and hemoglobin maturation. May play a role in regulating the function of the thioredoxin system. Does not posses any thyoredoxin activity since it lacks the conserved motif that is essential for catalytic activity. [UniProt]
Calculated Mw	37 kDa

## Images



HeLa

ARG56317 anti-GLRX3 antibody WB image

Western blot: HeLa cell lysate stained with ARG56317 anti-GLRX3 antibody.