

## ARG56326 anti-BAP1 / UCHL2 antibody

Package: 100 µl  
Store at: -20°C

### Summary

Product Description	Rabbit Polyclonal antibody recognizes BAP1 / UCHL2
Tested Reactivity	Hu, Ms, Rat
Tested Application	ICC/IF, IHC-P, WB
Host	Rabbit
Clonality	Polyclonal
Isotype	IgG
Target Name	BAP1 / UCHL2
Species	Human
Immunogen	Recombinant protein of Human BAP1 / UCHL2
Conjugation	Un-conjugated
Alternate Names	Cerebral protein 6; HUCEP-13; hucep-6; BRCA1-associated protein 1; Ubiquitin carboxyl-terminal hydrolase BAP1; EC 3.4.19.12; UCHL2

### Application Instructions

Application table	Application	Dilution
	ICC/IF	1:50 - 1:200
	IHC-P	1:50 - 1:200
	WB	1:500 - 1:2000
Application Note	* The dilutions indicate recommended starting dilutions and the optimal dilutions or concentrations should be determined by the scientist.	

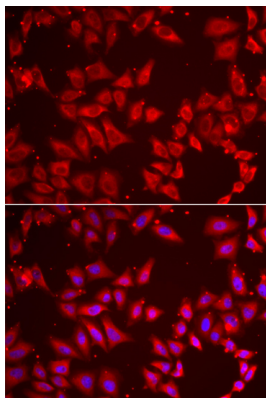
### Properties

Form	Liquid
Purification	Affinity purification with immunogen.
Buffer	PBS (pH 7.3), 0.02% Sodium azide and 50% Glycerol.
Preservative	0.02% Sodium azide
Stabilizer	50% Glycerol
Storage instruction	For continuous use, store undiluted antibody at 2-8°C for up to a week. For long-term storage, aliquot and store at -20°C. Storage in frost free freezers is not recommended. Avoid repeated freeze/thaw cycles. Suggest spin the vial prior to opening. The antibody solution should be gently mixed before use.
Note	For laboratory research only, not for drug, diagnostic or other use.

## Bioinformation

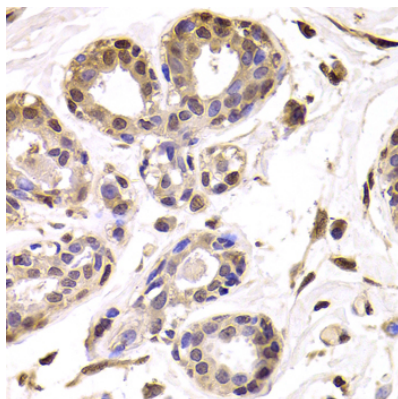
Gene Symbol	BAP1
Gene Full Name	BRCA1 associated protein-1 (ubiquitin carboxy-terminal hydrolase)
Background	This gene belongs to the ubiquitin C-terminal hydrolase subfamily of deubiquitinating enzymes that are involved in the removal of ubiquitin from proteins. The encoded enzyme binds to the breast cancer type 1 susceptibility protein (BRCA1) via the RING finger domain of the latter and acts as a tumor suppressor. In addition, the enzyme may be involved in regulation of transcription, regulation of cell cycle and growth, response to DNA damage and chromatin dynamics. Germline mutations in this gene may be associated with tumor predisposition syndrome (TPDS), which involves increased risk of cancers including malignant mesothelioma, uveal melanoma and cutaneous melanoma. [provided by RefSeq, May 2013]
Function	Deubiquitinating enzyme that plays a key role in chromatin by mediating deubiquitination of histone H2A and HCFC1. Catalytic component of the PR-DUB complex, a complex that specifically mediates deubiquitination of histone H2A monoubiquitinated at 'Lys-119' (H2AK119ub1). Does not deubiquitinate monoubiquitinated histone H2B. Acts as a regulator of cell growth by mediating deubiquitination of HCFC1 N-terminal and C-terminal chains, with some specificity toward 'Lys-48'-linked polyubiquitin chains compared to 'Lys-63'-linked polyubiquitin chains. Deubiquitination of HCFC1 does not lead to increase stability of HCFC1. Interferes with the BRCA1 and BARD1 heterodimer activity by inhibiting their ability to mediate ubiquitination and autoubiquitination. It however does not mediate deubiquitination of BRCA1 and BARD1. Able to mediate autodeubiquitination via intramolecular interactions to counteract monoubiquitination at the nuclear localization signal (NLS), thereby protecting it from cytoplasmic sequestration. Acts as a tumor suppressor. [UniProt]
Calculated Mw	80 kDa
PTM	Ubiquitinated: monoubiquitinated at multiple site of its nuclear localization signal (NLS) BY UBE2O, leading to cytoplasmic retention. Able to mediate autodeubiquitination via intramolecular interactions to counteract cytoplasmic retention.

## Images



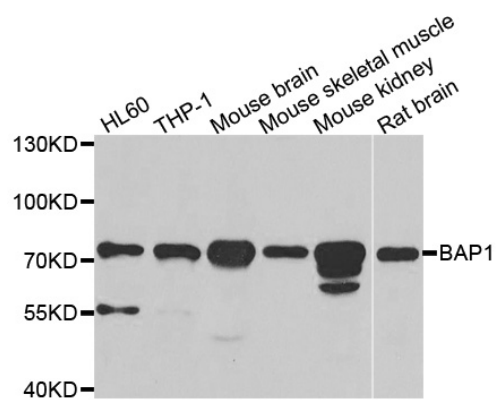
ARG56326 anti-BAP1 / UCHL2 antibody ICC/IF image

Immunofluorescence: HeLa cells stained with ARG56326 anti-BAP1 / UCHL2 antibody. Blue: DAPI for nuclear staining.



ARG56326 anti-BAP1 / UCHL2 antibody IHC-P image

Immunohistochemistry: Paraffin-embedded Human mammary gland stained with ARG56326 anti-BAP1 / UCHL2 antibody at 1:100 dilution (400x lens).



ARG56326 anti-BAP1 / UCHL2 antibody WB image

Western blot: HL60, THP-1, Mouse brain, Mouse skeletal muscle, Mouse kidney and Rat brain lysates stained with ARG56326 anti-BAP1 / UCHL2 antibody.