

ARG56634 anti-CCL21 / Exodus 2 antibody

Package: 50 µg
Store at: -20°C

Summary

Product Description	Rabbit Polyclonal antibody recognizes CCL21 / Exodus 2
Tested Reactivity	Hu
Tested Application	ELISA, Neut, WB
Host	Rabbit
Clonality	Polyclonal
Isotype	IgG
Target Name	CCL21 / Exodus 2
Species	Human
Immunogen	E.coli derived Recombinant Human Exodus2. (SDGGAQDCCL KYSQRKIPAK VVRSYRKQEP SLGCSIPAIL FLPRKRSQAE LCADPKELWV QQLMQHLDKT PSPQKPAQGC RKDRGASKTG KKGKGSKGCR KTERSQTPKG P)
Conjugation	Un-conjugated
Alternate Names	TCA4; Small-inducible cytokine A21; Beta-chemokine exodus-2; ECL; SCYA21; Secondary lymphoid-tissue chemokine; CKb9; 6Ckine; C-C motif chemokine 21; SLC

Application Instructions

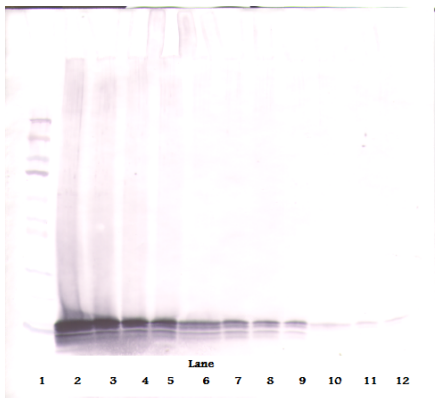
Application table	Application	Dilution
	ELISA	Sandwich: 0.5 - 2.0 µg/ml with ARG56744 as a detection antibody
	Neut	6.0 - 8.0 µg/ml (To yield [ND50] of the biological activity of hExodus - 2 (100.0 ng/ml))
	WB	0.1 - 0.2 µg/ml
Application Note	* The dilutions indicate recommended starting dilutions and the optimal dilutions or concentrations should be determined by the scientist.	

Properties

Form	Liquid
Purification	Affinity purification with immunogen.
Buffer	PBS (pH 7.2)
Concentration	1 mg/ml
Storage instruction	For continuous use, store undiluted antibody at 2-8°C for up to a week. For long-term storage, aliquot and store at -20°C or below. Storage in frost free freezers is not recommended. Avoid repeated freeze/thaw cycles. Suggest spin the vial prior to opening. The antibody solution should be gently mixed before use.
Note	For laboratory research only, not for drug, diagnostic or other use.

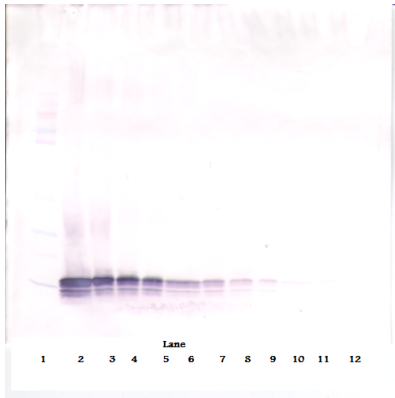
Database links	GeneID: 6366 Human Swiss-port # O00585 Human
Gene Symbol	CCL21
Gene Full Name	chemokine (C-C motif) ligand 21
Background	This antimicrobial gene is one of several CC cytokine genes clustered on the p-arm of chromosome 9. Cytokines are a family of secreted proteins involved in immunoregulatory and inflammatory processes. The CC cytokines are proteins characterized by two adjacent cysteines. Similar to other chemokines the protein encoded by this gene inhibits hemopoiesis and stimulates chemotaxis. This protein is chemotactic in vitro for thymocytes and activated T cells, but not for B cells, macrophages, or neutrophils. The cytokine encoded by this gene may also play a role in mediating homing of lymphocytes to secondary lymphoid organs. It is a high affinity functional ligand for chemokine receptor 7 that is expressed on T and B lymphocytes and a known receptor for another member of the cytokine family (small inducible cytokine A19). [provided by RefSeq, Sep 2014]
Function	Inhibits hemopoiesis and stimulates chemotaxis. Chemotactic in vitro for thymocytes and activated T-cells, but not for B-cells, macrophages, or neutrophils. Shows preferential activity towards naive T-cells. May play a role in mediating homing of lymphocytes to secondary lymphoid organs. Binds to atypical chemokine receptor ACKR4 and mediates the recruitment of beta-arrestin (ARRB1/2) to ACKR4. [UniProt]
Calculated Mw	15 kDa

Images



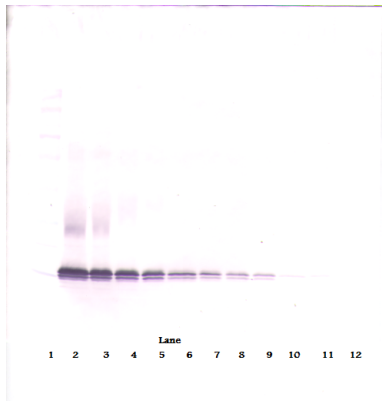
ARG56634 anti-CCL21 / Exodus 2 antibody WB image

Western blot: 250 - 0.24 ng of Human Exodus-2 stained with ARG56634 anti-CCL21 / Exodus 2 antibody, under reducing conditions.



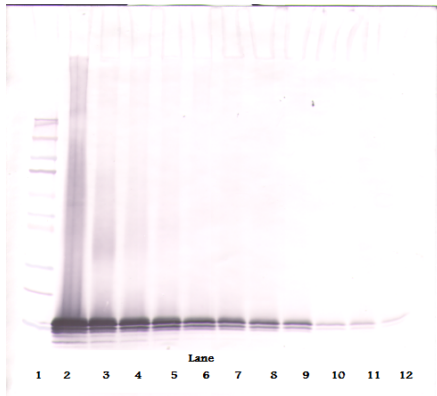
ARG56634 anti-CCL21 / Exodus 2 antibody WB image

Western blot: 250 - 0.24 ng of Human Exodus-2 stained with ARG56634 anti-CCL21 / Exodus 2 antibody, under reducing conditions.



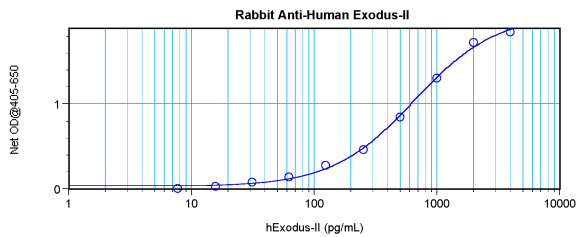
ARG56634 anti-CCL21 / Exodus 2 antibody WB image

Western blot: 250 - 0.24 ng of Human Exodus-2 stained with ARG56634 anti-CCL21 / Exodus 2 antibody, under non-reducing conditions.



ARG56634 anti-CCL21 / Exodus 2 antibody WB image

Western blot: 250 - 0.24 ng of Human Exodus-2 stained with ARG56634 anti-CCL21 / Exodus 2 antibody, under non-reducing conditions.



ARG56634 anti-CCL21 / Exodus 2 antibody standard curve image

Sandwich ELISA: ARG56634 anti-CCL21 / Exodus 2 antibody as a capture antibody at 0.5 - 2.0 $\mu\text{g}/\text{ml}$ combined with ARG56744 anti-CCL21 / Exodus2 antibody (Biotin) as a detection antibody. Results of a typical standard run with optical density.