

ARG56696 anti-IL13 antibody

Package: 50 µg
Store at: -20°C

Summary

Product Description	Rabbit Polyclonal antibody recognizes IL13
Tested Reactivity	Rat
Tested Application	ELISA, Neut, WB
Host	Rabbit
Clonality	Polyclonal
Isotype	IgG
Target Name	IL13
Species	Rat
Immunogen	E.coli derived Recombinant Rat IL-13 (113 aa). (TPGPVRRSTS PPVALRELIE ELSNITQDQK TSLCNSSIVW SVDLTAGGFC AALESLTNIS SCNAIHRTQR ILNGLCNQKA SDVASSPPDT KIEVAQFISK LLNYSKQLFR YGH)
Conjugation	Un-conjugated
Alternate Names	Interleukin-13; P600; IL-13

Application Instructions

Application table	Application	Dilution
	ELISA	Sandwich: 0.5 - 2.0 µg/ml with ARG56805 as a detection antibody
	Neut	0.55 - 0.83 µg/ml (To yield [ND50] of the biological activity of Rat IL - 13 (0.5 ng/ml))
	WB	0.1 - 0.2 µg/ml

Application Note * The dilutions indicate recommended starting dilutions and the optimal dilutions or concentrations should be determined by the scientist.

Properties

Form	Liquid
Purification	Affinity purification with immunogen.
Buffer	PBS (pH 7.2)
Concentration	1 mg/ml
Storage instruction	For continuous use, store undiluted antibody at 2-8°C for up to a week. For long-term storage, aliquot and store at -20°C or below. Storage in frost free freezers is not recommended. Avoid repeated freeze/thaw cycles. Suggest spin the vial prior to opening. The antibody solution should be gently mixed before use.
Note	For laboratory research only, not for drug, diagnostic or other use.

Bioinformation

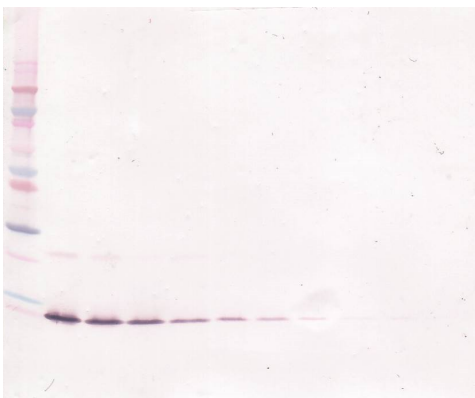
Database links	GeneID: 116553 Rat Swiss-port # P42203 Rat
Gene Symbol	Il13
Gene Full Name	interleukin 13
Background	This gene encodes an immunoregulatory cytokine produced primarily by activated Th2 cells. This cytokine is involved in several stages of B-cell maturation and differentiation. It up-regulates CD23 and MHC class II expression, and promotes IgE isotype switching of B cells. This cytokine down-regulates macrophage activity, thereby inhibits the production of pro-inflammatory cytokines and chemokines. This cytokine is found to be critical to the pathogenesis of allergen-induced asthma but operates through mechanisms independent of IgE and eosinophils. This gene, IL3, IL5, IL4, and CSF2 form a cytokine gene cluster on chromosome 5q, with this gene particularly close to IL4. [provided by RefSeq, Jul 2008]
Function	Cytokine. Inhibits inflammatory cytokine production. Synergizes with IL2 in regulating interferon-gamma synthesis. May be critical in regulating inflammatory and immune responses. [UniProt]
Calculated Mw	16 kDa

Images



ARG56696 anti-IL13 antibody WB image

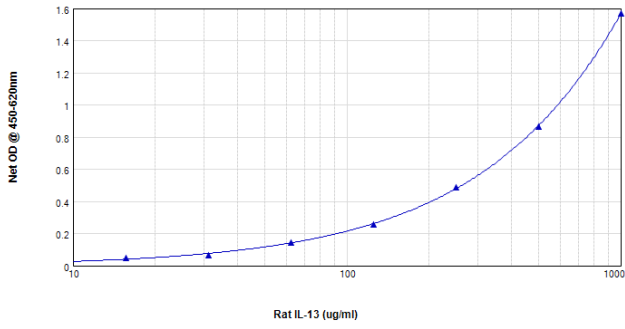
Western blot: 250 - 0.24 ng of Rat IL-13 stained with ARG56696 anti-IL13 antibody, under reducing conditions.



ARG56696 anti-IL13 antibody WB image

Western blot: 250 - 0.24 ng of Rat IL-13 stained with ARG56696 anti-IL13 antibody, under non-reducing conditions.

Rabbit Anti-Rat IL-13



ARG56696 anti-IL13 antibody standard curve image

Sandwich ELISA: ARG56696 anti-IL13 antibody as a capture antibody at 0.5 - 2.0 µg/ml combined with ARG56805 anti-IL13 antibody (Biotin) as a detection antibody. Results of a typical standard run with optical density.