

ARG56705 anti-PDGF BB antibody

Package: 50 µg
Store at: -20°C

Summary

Product Description	Rabbit Polyclonal antibody recognizes PDGF BB
Tested Reactivity	Hu
Tested Application	ELISA, IHC-P, Neut, WB
Host	Rabbit
Clonality	Polyclonal
Isotype	IgG
Target Name	PDGF BB
Species	Human
Immunogen	E.coli derived Recombinant Human PDGF-BB. (SLGSLTIAEP AMIAECKTRT EVFEISRRLI DRTNANFLVW PPCVEVQRCS GCCNNRNVQC RPTQVQLRPV QVRKIEIVRK KPIFKKATVT LEDHLACKCE TVAAARPV)
Conjugation	Un-conjugated
Alternate Names	SIS; Becaplermin; Platelet-derived growth factor subunit B; IBGC5; PDGF subunit B; c-sis; SSV; PDGF-2; Proto-oncogene c-Sis; Platelet-derived growth factor beta polypeptide; PDGF2; Platelet-derived growth factor B chain

Application Instructions

Application table	Application	Dilution
	ELISA	Sandwich: 0.5 - 2.0 µg/ml with ARG56814 as a detection antibody
	IHC-P	1.0 µg/ml
	Neut	0.03 - 0.04 µg/ml (To yield [ND50] of the biological activity of hPDGF - BB (2.5 ng/ml))
	WB	0.1 - 0.2 µg/ml
Application Note	* The dilutions indicate recommended starting dilutions and the optimal dilutions or concentrations should be determined by the scientist.	

Properties

Form	Liquid
Purification	Affinity purification with immunogen.
Buffer	PBS (pH 7.2)
Concentration	1 mg/ml
Storage instruction	For continuous use, store undiluted antibody at 2-8°C for up to a week. For long-term storage, aliquot and store at -20°C or below. Storage in frost free freezers is not recommended. Avoid repeated freeze/thaw cycles. Suggest spin the vial prior to opening. The antibody solution should be gently mixed

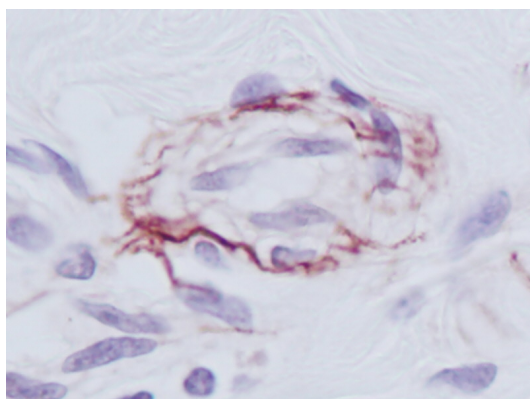
before use.

Note For laboratory research only, not for drug, diagnostic or other use.

Bioinformation

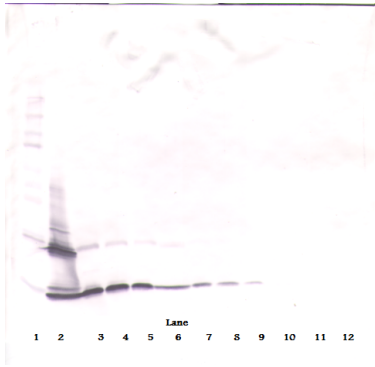
Database links	GeneID: 5155 Human Swiss-port # P01127 Human
Gene Symbol	PDGFB
Gene Full Name	platelet-derived growth factor beta polypeptide
Background	The protein encoded by this gene is a member of the platelet-derived growth factor family. The four members of this family are mitogenic factors for cells of mesenchymal origin and are characterized by a motif of eight cysteines. This gene product can exist either as a homodimer (PDGF-BB) or as a heterodimer with the platelet-derived growth factor alpha polypeptide (PDGF-AB), where the dimers are connected by disulfide bonds. Mutations in this gene are associated with meningioma. Reciprocal translocations between chromosomes 22 and 17, at sites where this gene and that for collagen type 1, alpha 1 are located, are associated with a particular type of skin tumor called dermatofibrosarcoma protuberans resulting from unregulated expression of growth factor. Two alternatively spliced transcript variants encoding different isoforms have been identified for this gene. [provided by RefSeq, Feb 2013]
Function	Growth factor that plays an essential role in the regulation of embryonic development, cell proliferation, cell migration, survival and chemotaxis. Potent mitogen for cells of mesenchymal origin. Required for normal proliferation and recruitment of pericytes and vascular smooth muscle cells in the central nervous system, skin, lung, heart and placenta. Required for normal blood vessel development, and for normal development of kidney glomeruli. Plays an important role in wound healing. Signaling is modulated by the formation of heterodimers with PDGFA (By similarity). [UniProt]
Highlight	Related products: PDGF BB antibodies ; PDGF BB ELISA Kits ; Anti-Rabbit IgG secondary antibodies ; Related news: The role of HDGF in tumor angiogenesis
Calculated Mw	27 kDa

Images



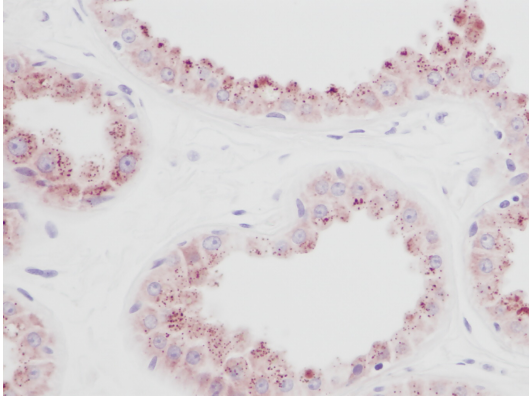
ARG56705 anti-PDGF BB antibody IHC-P image

Immunohistochemistry: Formalin-fixed and paraffin-embedded sections of normal Human skin. The recommended ARG56705 anti-PDGF BB antibody concentration is 1.0 µg/ml overnight at 4°C. An HRP-labeled polymer detection system was used with a non-alcohol soluble AEC chromogen. Antigen Retrieval: Incubate tissue section in a buffer (proteinase K) at RT for 10 min.



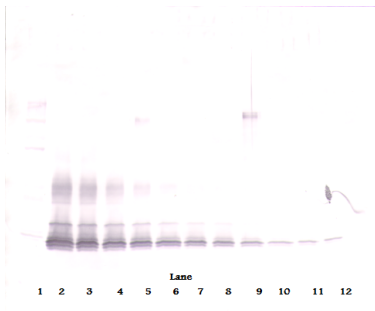
ARG56705 anti-PDGF BB antibody WB image

Western blot: 250 - 0.24 ng of Human PDGF-BB stained with ARG56705 anti-PDGF BB antibody, under reducing conditions.



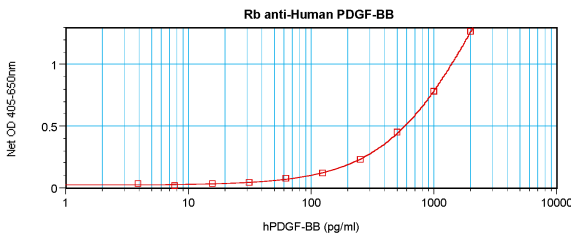
ARG56705 anti-PDGF BB antibody IHC-P image

Immunohistochemistry: Formalin-fixed and paraffin-embedded sections of normal Human skin. The recommended ARG56705 anti-PDGF BB antibody concentration is 1.0 µg/ml overnight at 4°C. An HRP-labeled polymer detection system was used with a non-alcohol soluble AEC chromogen. Antigen Retrieval: Incubate tissue section in a buffer (proteinase K) at RT for 10 min.



ARG56705 anti-PDGF BB antibody WB image

Western blot: 250 - 0.24 ng of Human PDGF-BB stained with ARG56705 anti-PDGF BB antibody, under non-reducing conditions.



ARG56705 anti-PDGF BB antibody standard curve image

Sandwich ELISA: ARG56705 anti-PDGF BB antibody as a capture antibody at 0.5 - 2.0 µg/ml combined with ARG56814 anti-PDGF-BB antibody (Biotin) as a detection antibody. Results of a typical standard run with optical density.