

## ARG56726 anti-IL4 antibody (Biotin)

Package: 50 µg  
Store at: 4°C

### Summary

Product Description	Biotin-conjugated Rabbit Polyclonal antibody recognizes IL4
Tested Reactivity	Rat
Tested Application	ELISA, WB
Host	Rabbit
Clonality	Polyclonal
Isotype	IgG
Target Name	IL4
Species	Rat
Immunogen	E.coli derived Recombinant Rat IL-4. (MHGCNDSPLR EIINTLNQVT EKGTPCTEMF VPDVLTATRN TTENELICRA SRVLRKFYFP RDVPPCLKNK SGVLGELRKL CRGVSGLNSL RSCTVNESTL TTLKDFLESL KSILRGKYLQ SCTSMS)
Conjugation	Biotin
Alternate Names	BSF-1; IL-4; B-cell stimulatory factor 1; BCGF1; Lymphocyte stimulatory factor 1; BCGF-1; Interleukin-4; Pitrakinra; Binetrakin; BSF1

### Application Instructions

Application table	Application	Dilution
	ELISA	Direct: 0.25 - 1.0 µg/ml Sandwich: 0.25 - 1.0 µg/ml with ARG56611 as a capture antibody
	WB	0.1 - 0.2 µg/ml
Application Note	* The dilutions indicate recommended starting dilutions and the optimal dilutions or concentrations should be determined by the scientist.	

### Properties

Form	Liquid
Purification	Purified by affinity chromatography.
Buffer	PBS (pH 7.2)
Concentration	1 mg/ml
Storage instruction	Aliquot and store in the dark at 2-8°C. Keep protected from prolonged exposure to light. Avoid repeated freeze/thaw cycles. Suggest spin the vial prior to opening. The antibody solution should be gently mixed before use.
Note	For laboratory research only, not for drug, diagnostic or other use.

## Bioinformation

### Database links

[GeneID: 287287 Rat](#)

[Swiss-port # P20096 Rat](#)

### Gene Symbol

IL4

### Gene Full Name

interleukin 4

### Background

The protein encoded by this gene is a pleiotropic cytokine produced by activated T cells. This cytokine is a ligand for interleukin 4 receptor. The interleukin 4 receptor also binds to IL13, which may contribute to many overlapping functions of this cytokine and IL13. STAT6, a signal transducer and activator of transcription, has been shown to play a central role in mediating the immune regulatory signal of this cytokine. This gene, IL3, IL5, IL13, and CSF2 form a cytokine gene cluster on chromosome 5q, with this gene particularly close to IL13. This gene, IL13 and IL5 are found to be regulated coordinately by several long-range regulatory elements in an over 120 kilobase range on the chromosome. Two alternatively spliced transcript variants of this gene encoding distinct isoforms have been reported. [provided by RefSeq, Jul 2008]

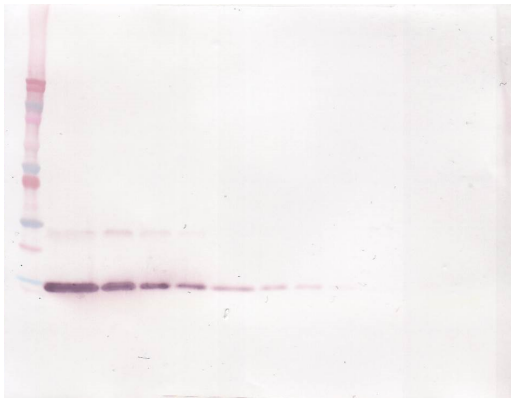
### Function

Participates in at least several B-cell activation processes as well as of other cell types. It is a costimulator of DNA-synthesis. It induces the expression of class II MHC molecules on resting B-cells. It enhances both secretion and cell surface expression of IgE and IgG1. It also regulates the expression of the low affinity Fc receptor for IgE (CD23) on both lymphocytes and monocytes. [UniProt]

### Calculated Mw

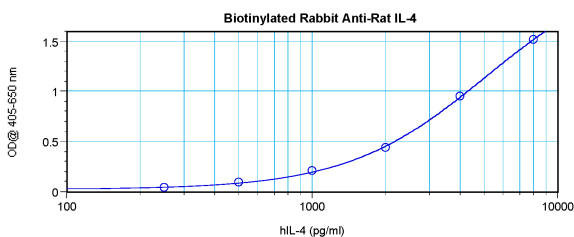
17 kDa

## Images



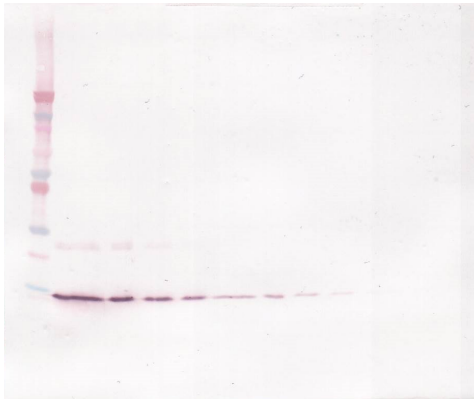
ARG56726 anti-IL4 antibody (Biotin) WB image

Western blot: 250 - 0.24 ng of Rat IL-4 stained with ARG56726 anti-IL4 antibody (Biotin), under reducing conditions.



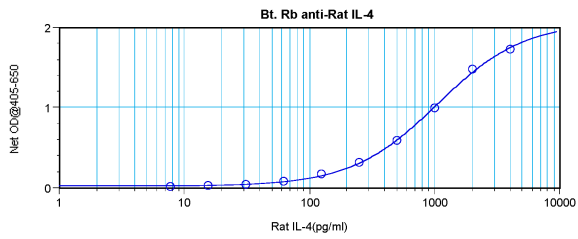
ARG56726 anti-IL4 antibody (Biotin) standard curve image

Direct ELISA: ARG56726 anti-IL4 antibody (Biotin) at 0.25 - 1.0 µg/ml results of a typical standard run with optical density.



ARG56726 anti-IL4 antibody (Biotin) WB image

Western blot: 250 - 0.24 ng of Rat IL-4 stained with ARG56726 anti-IL4 antibody (Biotin), under non-reducing conditions.



ARG56726 anti-IL4 antibody (Biotin) standard curve image

Sandwich ELISA: ARG56726 anti-IL4 antibody (Biotin) as a detection antibody at 0.25 - 1.0  $\mu\text{g}/\text{ml}$  combined with ARG56611 anti-IL4 antibody as a capture antibody. Results of a typical standard run with optical density.