

**ARG56729**  
anti-CXCL10 / IP10 antibody (Biotin)Package: 50 µg  
Store at: 4°C

### Summary

Product Description	Biotin-conjugated Rabbit Polyclonal antibody recognizes CXCL10 / IP10
Tested Reactivity	Ms
Tested Application	ELISA, WB
Host	Rabbit
Clonality	Polyclonal
Isotype	IgG
Target Name	CXCL10 / IP10
Species	Mouse
Immunogen	E.coli derived Recombinant Mouse IP10 (CXCL10). (IPLARTVRCN CIHIDDGPVR MRAIGKLEII PASLSCPVE IATMKNDE QRCLNPESKT IKNLMKAFSQ KRKRAP)
Conjugation	Biotin
Alternate Names	gIP-10; INP10; 10 kDa interferon gamma-induced protein; IP-10; C-X-C motif chemokine 10; 1-73; Small-inducible cytokine B10; IFI10; Gamma-IP10; SCYB10; crg-2; C7; mob-1

### Application Instructions

Application table	Application	Dilution
	ELISA	Direct: 0.25 - 1.0 µg/ml Sandwich: 0.25 - 1.0 µg/ml with ARG56615 as a capture antibody
	WB	0.1 - 0.2 µg/ml
Application Note	* The dilutions indicate recommended starting dilutions and the optimal dilutions or concentrations should be determined by the scientist.	

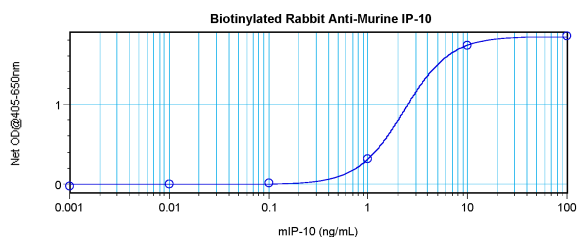
### Properties

Form	Liquid
Purification	Purified by affinity chromatography.
Buffer	PBS (pH 7.2)
Concentration	1 mg/ml
Storage instruction	Aliquot and store in the dark at 2-8°C. Keep protected from prolonged exposure to light. Avoid repeated freeze/thaw cycles. Suggest spin the vial prior to opening. The antibody solution should be gently mixed before use.
Note	For laboratory research only, not for drug, diagnostic or other use.

### Bioinformation

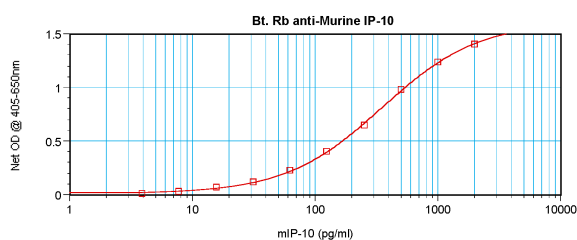
Database links	<a href="#">GeneID: 15945 Mouse</a> <a href="#">Swiss-port # P17515 Mouse</a>
Gene Symbol	Cxcl10
Gene Full Name	chemokine (C-X-C motif) ligand 10
Background	This antimicrobial gene encodes a chemokine of the CXC subfamily and ligand for the receptor CXCR3. Binding of this protein to CXCR3 results in pleiotropic effects, including stimulation of monocytes, natural killer and T-cell migration, and modulation of adhesion molecule expression. [provided by RefSeq, Sep 2014]
Function	Chemotactic for monocytes and T-lymphocytes. Binds to CXCR3. [UniProt]
Highlight	Related products: <a href="#">CXCL10 antibodies</a> ; <a href="#">CXCL10 ELISA Kits</a> ; <a href="#">CXCL10 recombinant proteins</a> ; <a href="#">Anti-Rabbit IgG secondary antibodies</a> ; Related news: <a href="#">circNDUFB2, a circular RNA (circRNA), activates anti-tumor immunity</a>
Calculated Mw	11 kDa
PTM	CXCL10(1-73) is produced by proteolytic cleavage after secretion from keratinocytes.

## Images



ARG56729 anti-CXCL10 / IP10 antibody (Biotin) standard curve image

Direct ELISA: ARG56729 anti-CXCL10 / IP10 antibody (Biotin) at 0.25 - 1.0 µg/ml results of a typical standard run with optical density.



ARG56729 anti-CXCL10 / IP10 antibody (Biotin) standard curve image

Sandwich ELISA: ARG56729 anti-CXCL10 / IP10 antibody (Biotin) as a detection antibody at 0.25 - 1.0 µg/ml combined with ARG56615 anti-CXCL10 / IP10 antibody as a capture antibody. Results of a typical standard run with optical density.