

## ARG57101 anti-LDHA / Lactate Dehydrogenase antibody [1A4]

Package: 50 µl  
Store at: -20°C

### Summary

Product Description	Mouse Monoclonal antibody [1A4] recognizes LDHA / Lactate Dehydrogenase
Tested Reactivity	Hu
Tested Application	FACS, ICC/IF, WB
Host	Mouse
Clonality	Monoclonal
Clone	1A4
Isotype	IgG2b, kappa
Target Name	LDHA / Lactate Dehydrogenase
Species	Human
Immunogen	Recombinant fragment around aa. 1-332 of Human LDHA
Conjugation	Un-conjugated
Alternate Names	PIG19; Cell proliferation-inducing gene 19 protein; LDH muscle subunit; Renal carcinoma antigen NY-REN-59; HEL-S-133P; L-lactate dehydrogenase A chain; GSD11; LDHM; EC 1.1.1.27; LDH-M; LDH-A

### Application Instructions

Application table	Application	Dilution
	FACS	Assay-dependent
	ICC/IF	Assay-dependent
	WB	1:500 - 1:8000
Application Note	* The dilutions indicate recommended starting dilutions and the optimal dilutions or concentrations should be determined by the scientist.	

### Properties

Form	Liquid
Purification	Purification with Protein G.
Buffer	PBS (pH 7.4), 0.02% Sodium azide and 10% Glycerol.
Preservative	0.02% Sodium azide
Stabilizer	10% Glycerol
Concentration	1 mg/ml
Storage instruction	For continuous use, store undiluted antibody at 2-8°C for up to a week. For long-term storage, aliquot and store at -20°C. Storage in frost free freezers is not recommended. Avoid repeated freeze/thaw cycles. Suggest spin the vial prior to opening. The antibody solution should be gently mixed before use.

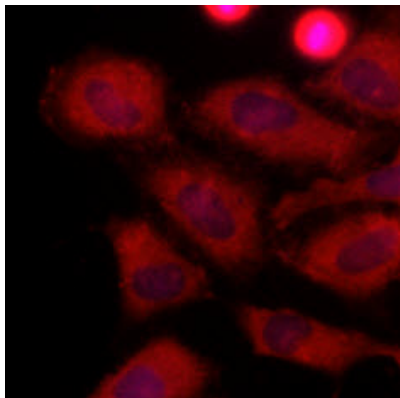
Note

For laboratory research only, not for drug, diagnostic or other use.

## Bioinformation

Database links	<a href="#">GeneID: 3939 Human</a> <a href="#">Swiss-port # P00338 Human</a>
Gene Symbol	LDHA
Gene Full Name	lactate dehydrogenase A
Background	The protein encoded by this gene catalyzes the conversion of L-lactate and NAD to pyruvate and NADH in the final step of anaerobic glycolysis. The protein is found predominantly in muscle tissue and belongs to the lactate dehydrogenase family. Mutations in this gene have been linked to exertional myoglobinuria. Multiple transcript variants encoding different isoforms have been found for this gene. The human genome contains several non-transcribed pseudogenes of this gene. [provided by RefSeq, Sep 2008]
Research Area	Cancer antibody; Metabolism antibody; Signaling Transduction antibody; Lactate dehydrogenase antibody; Warburg Effect signaling pathway antibody
Calculated Mw	37 kDa
PTM	ISGylated.

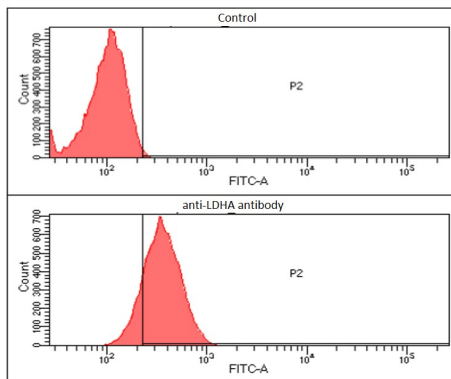
## Images



ARG57101 anti-LDHA / Lactate Dehydrogenase antibody [1A4] ICC/IF image

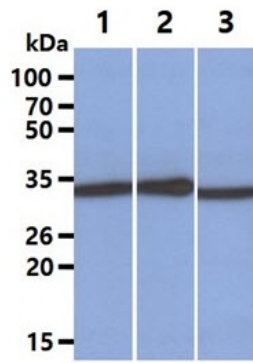
Immunofluorescence: HeLa cells stained with ARG57101 anti-LDHA / Lactate Dehydrogenase antibody [1A4] at 1:500 (Red).

Hoechst 3342 (Blue) for nucleus staining.



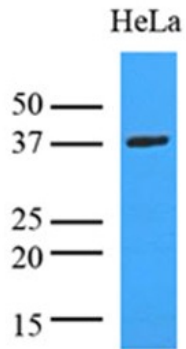
ARG57101 anti-LDHA / Lactate Dehydrogenase antibody [1A4] FACS image

Flow Cytometry: HeLa cell line stained with ARG57101 anti-LDHA / Lactate Dehydrogenase antibody [1A4] at 2-5  $\mu\text{g}$  for  $1 \times 10^6$  cells. Secondary antibody: Goat anti-Mouse IgG Alexa fluor 488 conjugate.



ARG57101 anti-LDHA / Lactate Dehydrogenase antibody [1A4] WB image

Western blot: 40  $\mu$ g of 1) Jurkat, 2) 293T, and 3) A431 cell lysates stained with ARG57101 anti-LDHA / Lactate Dehydrogenase antibody [1A4] at 1:1000.



ARG57101 anti-LDHA / Lactate Dehydrogenase antibody [1A4] WB image

Western blot: 35  $\mu$ g of HeLa cell lysate stained with ARG57101 anti-LDHA / Lactate Dehydrogenase antibody [1A4] at 1:8000.