

ARG57504 anti-TOMM20 antibody [1B2]

Package: 50 µl
Store at: -20°C

Summary

Product Description	Mouse Monoclonal antibody [1B2] recognizes TOMM20
Tested Reactivity	Hu
Tested Application	FACS, ICC/IF, WB
Host	Mouse
Clonality	Monoclonal
Clone	1B2
Isotype	IgG1, kappa
Target Name	TOMM20
Species	Human
Immunogen	Recombinant Human TOMM20 (aa. 25-145) purified from E. coli.
Conjugation	Un-conjugated
Alternate Names	Outer mitochondrial membrane receptor Tom20; MAS20; Mitochondrial 20 kDa outer membrane protein; MOM19; Mitochondrial import receptor subunit TOM20 homolog; TOM20

Application Instructions

Application table	Application	Dilution
	FACS	2 - 5 µg/10 ⁶ cells
	ICC/IF	1:100
	WB	1:1000

Application Note * The dilutions indicate recommended starting dilutions and the optimal dilutions or concentrations should be determined by the scientist.

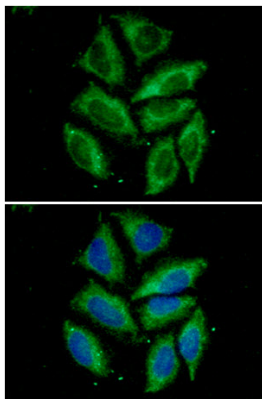
Properties

Form	Liquid
Purification	Purification with Protein A.
Buffer	PBS (pH 7.4), 0.02% Sodium azide and 10% Glycerol.
Preservative	0.02% Sodium azide
Stabilizer	10% Glycerol
Concentration	1 mg/ml
Storage instruction	For continuous use, store undiluted antibody at 2-8°C for up to a week. For long-term storage, aliquot and store at -20°C. Storage in frost free freezers is not recommended. Avoid repeated freeze/thaw cycles. Suggest spin the vial prior to opening. The antibody solution should be gently mixed before use.

Bioinformation

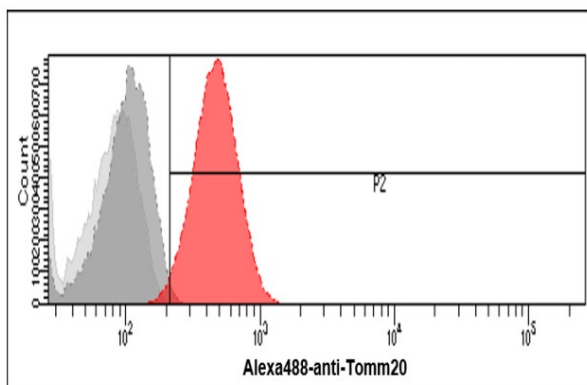
Gene Symbol	TOMM20
Gene Full Name	translocase of outer mitochondrial membrane 20 homolog (yeast)
Function	Central component of the receptor complex responsible for the recognition and translocation of cytosolically synthesized mitochondrial preproteins. Together with TOM22 functions as the transit peptide receptor at the surface of the mitochondrion outer membrane and facilitates the movement of preproteins into the TOM40 translocation pore (By similarity). [UniProt]
Calculated Mw	16 kDa
PTM	Ubiquitinated by PRKN during mitophagy, leading to its degradation and enhancement of mitophagy. Deubiquitinated by USP30.

Images



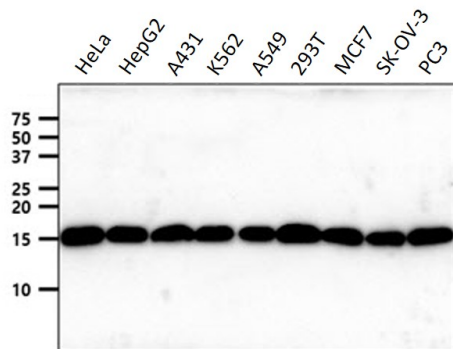
ARG57504 anti-TOMM20 antibody [1B2] ICC/IF image

Immunofluorescence: HeLa cells stained with ARG57504 anti-TOMM20 antibody [1B2] at 1:100 dilution. The secondary antibody (green) was used Alexa Fluor 488. DAPI was stained the cell nucleus (blue).



ARG57504 anti-TOMM20 antibody [1B2] FACS image

Flow Cytometry: HeLa cells stained with ARG57504 anti-TOMM20 antibody [1B2] at 2 - 5 $\mu\text{g}/10^6$ cells (red). Goat-anti Mouse IgG (Alexa fluor 488) was used as the secondary antibody. Mouse monoclonal IgG was used as the isotype control (dark gray), cells without incubation with primary and secondary antibody was used as the negative control (light gray).



ARG57504 anti-TOMM20 antibody [1B2] WB image

Western blot: 40 µg of HeLa, HepG2, A431, K562, A549, 293T, MCF7, SK-OV-3 and PC3 cell lysates stained with ARG57504 anti-TOMM20 antibody [1B2] at 1:1000 dilution.