

## ARG57601 anti-CD49b / Integrin alpha 2 antibody

Package: 100 µl  
Store at: -20°C

### Summary

Product Description	Rabbit Polyclonal antibody recognizes CD49b / Integrin alpha 2
Tested Reactivity	Hu, Ms, Rat
Tested Application	FACS, ICC/IF, IHC-P, IP, WB
Host	Rabbit
Clonality	Polyclonal
Isotype	IgG
Target Name	CD49b / Integrin alpha 2
Species	Human
Immunogen	Synthetic peptide derived from Human Integrin alpha 2.
Conjugation	Un-conjugated
Alternate Names	Collagen receptor; VLA-2 subunit alpha; HPA-5; CD49B; CD49 antigen-like family member B; GPIa; VLA-2; CD antigen CD49b; BR; VLAA2; Platelet membrane glycoprotein Ia; Integrin alpha-2

### Application Instructions

Application table	Application	Dilution
	FACS	1:100
	ICC/IF	1:50 - 1:200
	IHC-P	1:100
	IP	1:100
	WB	1:1000 - 1:2000

**Application Note** IHC-P: Antigen Retrieval: Microwave (8 min, twice) tissue section in Sodium citrate buffer (pH 6.0).  
\* The dilutions indicate recommended starting dilutions and the optimal dilutions or concentrations should be determined by the scientist.

### Properties

Form	Liquid
Purification	Affinity purified.
Buffer	PBS (pH 7.4), 150mM NaCl, 0.02% Sodium azide and 50% Glycerol.
Preservative	0.02% Sodium azide
Stabilizer	50% Glycerol
Storage instruction	For continuous use, store undiluted antibody at 2-8°C for up to a week. For long-term storage, aliquot and store at -20°C. Storage in frost free freezers is not recommended. Avoid repeated freeze/thaw cycles. Suggest spin the vial prior to opening. The antibody solution should be gently mixed before use.

**Note**

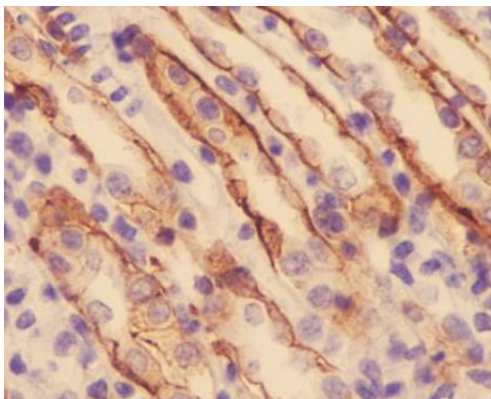
For laboratory research only, not for drug, diagnostic or other use.

## Bioinformation

---

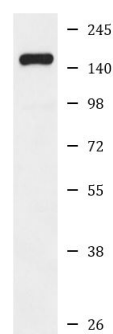
Gene Symbol	ITGA2
Gene Full Name	integrin, alpha 2 (CD49B, alpha 2 subunit of VLA-2 receptor)
Background	This gene encodes the alpha subunit of a transmembrane receptor for collagens and related proteins. The encoded protein forms a heterodimer with a beta subunit and mediates the adhesion of platelets and other cell types to the extracellular matrix. Loss of the encoded protein is associated with bleeding disorder platelet-type 9. Antibodies against this protein are found in several immune disorders, including neonatal alloimmune thrombocytopenia. This gene is located adjacent to a related alpha subunit gene. Alternative splicing results in multiple transcript variants. [provided by RefSeq, Aug 2012]
Function	Integrin alpha-2/beta-1 is a receptor for laminin, collagen, collagen C-propeptides, fibronectin and E-cadherin. It recognizes the proline-hydroxylated sequence G-F-P-G-E-R in collagen. It is responsible for adhesion of platelets and other cells to collagens, modulation of collagen and collagenase gene expression, force generation and organization of newly synthesized extracellular matrix. [UniProt]
Calculated Mw	129 kDa
Cellular Localization	Cytoplasm

## Images



ARG57601 anti-CD49b / Integrin alpha 2 antibody IHC-P image

Immunohistochemistry: Paraffin-embedded Mouse kidney tissue. Antigen Retrieval: Tissue section in Sodium citrate buffer (pH 6.0) heated in 900W for 8 min and heated again for 8 min at 750W. The tissue section was stained with ARG57601 anti-CD49b / Integrin alpha 2 antibody at 1:50 dilution, overnight at 4°C.



A431

ARG57601 anti-CD49b / Integrin alpha 2 antibody WB image

Western blot: A431 cell lysate stained with ARG57601 anti-CD49b / Integrin alpha 2 antibody.