

ARG57916
anti-PSA antibodyPackage: 100 µl
Store at: -20°C

Summary

Product Description	Rabbit Polyclonal antibody recognizes PSA
Tested Reactivity	Hu
Tested Application	IHC-P, WB
Host	Rabbit
Clonality	Polyclonal
Isotype	IgG
Target Name	PSA
Species	Human
Immunogen	Synthetic peptide derived from Human PSA.
Conjugation	Un-conjugated
Alternate Names	Prostate-specific antigen; Gamma-seminoprotein; APS; PSA; EC 3.4.21.77; Kallikrein-3; P-30 antigen; Semenogelase; hK3; Semin; KLK2A1

Application Instructions

Application table	Application	Dilution
	IHC-P	1:50 - 1:200
	WB	1:5000 - 1:20000
Application Note	* The dilutions indicate recommended starting dilutions and the optimal dilutions or concentrations should be determined by the scientist.	
Positive Control	Human prostate carcinoma	
Observed Size	~ 33 kDa	

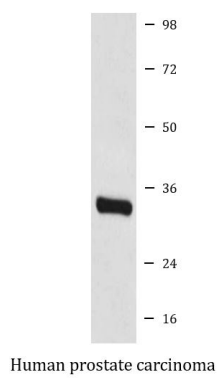
Properties

Form	Liquid
Purification	Affinity purified.
Buffer	PBS (pH 7.4), 0.02% Sodium azide and 50% Glycerol.
Preservative	0.02% Sodium azide
Stabilizer	50% Glycerol
Storage instruction	For continuous use, store undiluted antibody at 2-8°C for up to a week. For long-term storage, aliquot and store at -20°C. Storage in frost free freezers is not recommended. Avoid repeated freeze/thaw cycles. Suggest spin the vial prior to opening. The antibody solution should be gently mixed before use.
Note	For laboratory research only, not for drug, diagnostic or other use.

Bioinformation

Gene Symbol	KLK3
Gene Full Name	kallikrein-related peptidase 3
Background	Kallikreins are a subgroup of serine proteases having diverse physiological functions. Growing evidence suggests that many kallikreins are implicated in carcinogenesis and some have potential as novel cancer and other disease biomarkers. This gene is one of the fifteen kallikrein subfamily members located in a cluster on chromosome 19. Its protein product is a protease present in seminal plasma. It is thought to function normally in the liquefaction of seminal coagulum, presumably by hydrolysis of the high molecular mass seminal vesicle protein. Serum level of this protein, called PSA in the clinical setting, is useful in the diagnosis and monitoring of prostatic carcinoma. Alternate splicing of this gene generates several transcript variants encoding different isoforms. [provided by RefSeq, Jul 2008]
Function	Hydrolyzes semenogelin-1 thus leading to the liquefaction of the seminal coagulum. [UniProt]
Calculated Mw	29 kDa
Cellular Localization	Secreted. [UniProt]

Images



ARG57916 anti-PSA antibody WB image

Western blot: Human prostate carcinoma tissue lysate stained with ARG57916 anti-PSA antibody.