

ARG58374 anti-C4BPB antibody

Package: 50 µl
Store at: -20°C

Summary

Product Description	Rabbit Polyclonal antibody recognizes C4BPB
Tested Reactivity	Hu
Predict Reactivity	Dog, Pig
Tested Application	IHC-P
Host	Rabbit
Clonality	Polyclonal
Isotype	IgG
Target Name	C4BPB
Species	Human
Immunogen	Synthetic peptide around the N-terminal region of Human C4BPB. (within the following sequence: CCLMVAWRVSASDAEHCPDPPVDNSIFVAKEVEGQILGTYYVCIKGYHLV)
Conjugation	Un-conjugated
Alternate Names	C4b-binding protein beta chain; C4BP

Application Instructions

Predict Reactivity Note	Predicted homology based on immunogen sequence: Dog: 86%; Pig: 93%				
Application table	<table> <tr> <th>Application</th><th>Dilution</th></tr> <tr> <td>IHC-P</td><td>Assay-dependent</td></tr> </table>	Application	Dilution	IHC-P	Assay-dependent
Application	Dilution				
IHC-P	Assay-dependent				
Application Note	* The dilutions indicate recommended starting dilutions and the optimal dilutions or concentrations should be determined by the scientist.				
Positive Control	Human liver				

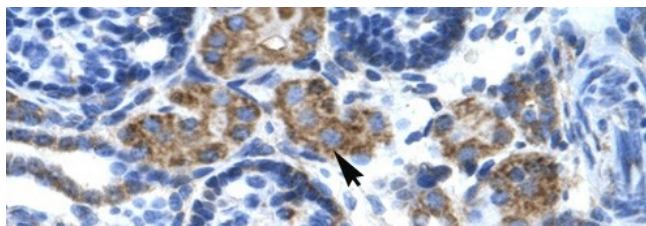
Properties

Form	Liquid
Purification	Affinity purified.
Buffer	PBS, 0.09% (w/v) Sodium azide and 2% Sucrose.
Preservative	0.09% (w/v) Sodium azide
Stabilizer	2% Sucrose
Concentration	Batch dependent: 0.5 - 1 mg/ml
Storage instruction	For continuous use, store undiluted antibody at 2-8°C for up to a week. For long-term storage, aliquot and store at -20°C or below. Storage in frost free freezers is not recommended. Avoid repeated freeze/thaw cycles. Suggest spin the vial prior to opening. The antibody solution should be gently mixed before use.

Bioinformation

Gene Symbol	C4BPB
Gene Full Name	complement component 4 binding protein, beta
Background	<p>This gene encodes a member of a superfamily of proteins composed predominantly of tandemly arrayed short consensus repeats of approximately 60 amino acids. A single, unique beta-chain encoded by this gene assembles with seven identical alpha-chains into the predominant isoform of C4b-binding protein, a multimeric protein that controls activation of the complement cascade through the classical pathway. C4b-binding protein has a regulatory role in the coagulation system also, mediated through the beta-chain binding of protein S, a vitamin K-dependent protein that serves as a cofactor of activated protein C. The genes encoding both alpha and beta chains are located adjacent to each other on human chromosome 1 in the regulator of complement activation gene cluster. Alternative splicing gives rise to multiple transcript variants. [provided by RefSeq, Jul 2008]</p>
Function	<p>Controls the classical pathway of complement activation. It binds as a cofactor to C3b/C4b inactivator (C3bINA), which then hydrolyzes the complement fragment C4b. It also accelerates the degradation of the C4bC2a complex (C3 convertase) by dissociating the complement fragment C2a. It also interacts with anticoagulant protein S and with serum amyloid P component. The beta chain binds protein S. [UniProt]</p>
Calculated Mw	28 kDa

Images



ARG58374 anti-C4BPB antibody IHC-P image

Immunohistochemistry: Paraffin-embedded Human kidney stained with ARG58374 anti-C4BPB antibody.