

ARG58731 anti-Galactosylceramidase antibody

Package: 100 µl
Store at: -20°C

Summary

Product Description	Rabbit Polyclonal antibody recognizes Galactosylceramidase
Tested Reactivity	Hu, Ms, Rat
Tested Application	ICC/IF, IHC-P, WB
Host	Rabbit
Clonality	Polyclonal
Isotype	IgG
Target Name	Galactosylceramidase
Species	Human
Immunogen	Recombinant fusion protein corresponding to aa. 40-300 of Human Galactosylceramidase (NP_000144.2).
Conjugation	Un-conjugated
Alternate Names	Galactocerebroside beta-galactosidase; Galactosylceramidase; Galactocerebrosidase; Galactosylceramide beta-galactosidase; GALCERase; EC 3.2.1.46

Application Instructions

Application table	Application	Dilution
	ICC/IF	1:50 - 1:200
	IHC-P	1:50 - 1:200
	WB	1:500 - 1:2000
Application Note	* The dilutions indicate recommended starting dilutions and the optimal dilutions or concentrations should be determined by the scientist.	
Positive Control	293T	
Observed Size	77 kDa	

Properties

Form	Liquid
Purification	Affinity purified.
Buffer	PBS (pH 7.3), 0.02% Sodium azide and 50% Glycerol.
Preservative	0.02% Sodium azide
Stabilizer	50% Glycerol
Storage instruction	For continuous use, store undiluted antibody at 2-8°C for up to a week. For long-term storage, aliquot and store at -20°C. Storage in frost free freezers is not recommended. Avoid repeated freeze/thaw cycles. Suggest spin the vial prior to opening. The antibody solution should be gently mixed before use.

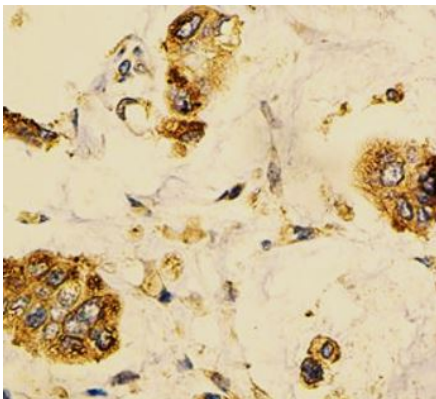
Note

For laboratory research only, not for drug, diagnostic or other use.

Bioinformation

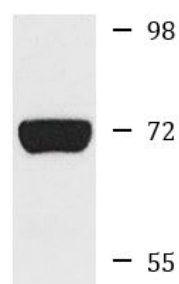
Gene Symbol	GALC
Gene Full Name	galactosylceramidase
Background	This gene encodes a lysosomal protein which hydrolyzes the galactose ester bonds of galactosylceramide, galactosylsphingosine, lactosylceramide, and monogalactosyldiglyceride. Mutations in this gene have been associated with Krabbe disease, also known as globoid cell leukodystrophy. Alternate transcriptional splice variants, encoding different isoforms, have been characterized. [provided by RefSeq, Jul 2008]
Function	Hydrolyzes the galactose ester bonds of galactosylceramide, galactosylsphingosine, lactosylceramide, and monogalactosyldiglyceride. Enzyme with very low activity responsible for the lysosomal catabolism of galactosylceramide, a major lipid in myelin, kidney and epithelial cells of small intestine and colon. [UniProt]
Calculated Mw	77 kDa
Cellular Localization	Lysosome. [UniProt]

Images



ARG58731 anti-Galactosylceramidase antibody IHC-P image

Immunohistochemistry: Paraffin-embedded Human gastric cancer stained with ARG58731 anti-Galactosylceramidase antibody at 1:100 dilution.



293T

ARG58731 anti-Galactosylceramidase antibody WB image

Western blot: 25 µg of 293T cell lysate stained with ARG58731 anti-Galactosylceramidase antibody at 1:1000 dilution.