

ARG59546 anti-SFTP1 antibody

Package: 50 µg
Store at: -20°C

Summary

Product Description	Rabbit Polyclonal antibody recognizes SFTP1
Tested Reactivity	Ms, Rat
Predict Reactivity	Hm
Tested Application	IHC-P, WB
Host	Rabbit
Clonality	Polyclonal
Isotype	IgG
Target Name	SFTP1
Species	Mouse
Immunogen	Synthetic peptide corresponding to aa. 233-248 of Mouse SFTP1. (WNDKGCLQYRLAICEF)
Conjugation	Un-conjugated
Alternate Names	SFTP1B; SP-A; COLEC4; Pulmonary surfactant-associated protein A1; PSAP; PSPA; 35 kDa pulmonary surfactant-associated protein; SFTP1; PSP-A; SPA; SPA1; Alveolar proteinosis protein; SP-A1; Collectin-4

Application Instructions

Application table	Application	Dilution
	IHC-P	0.5 - 1 µg/ml
	WB	0.1 - 0.5 µg/ml
Application Note	IHC-P: Antigen Retrieval: Heat mediation was performed in Citrate buffer (pH 6.0) for 20 min. * The dilutions indicate recommended starting dilutions and the optimal dilutions or concentrations should be determined by the scientist.	

Properties

Form	Liquid
Purification	Affinity purification with immunogen.
Buffer	0.9% NaCl, 0.2% Na ₂ HPO ₄ , 0.05% Thimerosal, 0.05% Sodium azide and 5% BSA.
Preservative	0.05% Thimerosal and 0.05% Sodium azide
Stabilizer	5% BSA
Concentration	0.5 mg/ml
Storage instruction	For continuous use, store undiluted antibody at 2-8°C for up to a week. For long-term storage, aliquot and store at -20°C or below. Storage in frost free freezers is not recommended. Avoid repeated freeze/thaw cycles. Suggest spin the vial prior to opening. The antibody solution should be gently mixed before use.

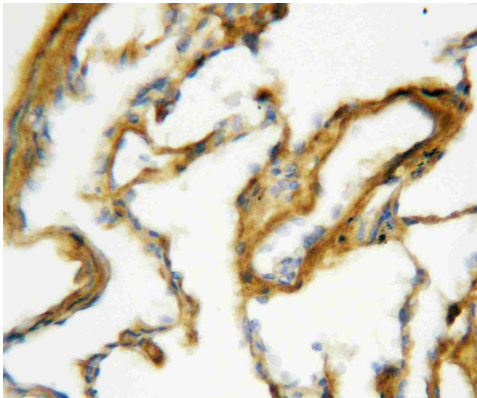
Note

For laboratory research only, not for drug, diagnostic or other use.

Bioinformation

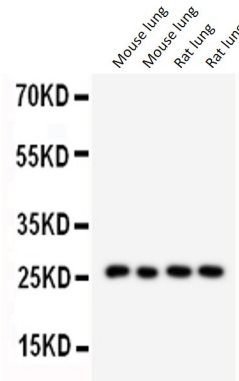
Gene Symbol	SFTPA1
Gene Full Name	surfactant protein A1
Background	This gene encodes a lung surfactant protein that is a member of a subfamily of C-type lectins called collectins. The encoded protein binds specific carbohydrate moieties found on lipids and on the surface of microorganisms. This protein plays an essential role in surfactant homeostasis and in the defense against respiratory pathogens. Mutations in this gene are associated with idiopathic pulmonary fibrosis. Alternate splicing results in multiple transcript variants. [provided by RefSeq, May 2010]
Function	In presence of calcium ions, it binds to surfactant phospholipids and contributes to lower the surface tension at the air-liquid interface in the alveoli of the mammalian lung and is essential for normal respiration. [UniProt]
Calculated Mw	26 kDa
PTM	N-acetylated. [UniProt]
Cellular Localization	Secreted, extracellular space, extracellular matrix. Secreted, extracellular space, surface film. [UniProt]

Images



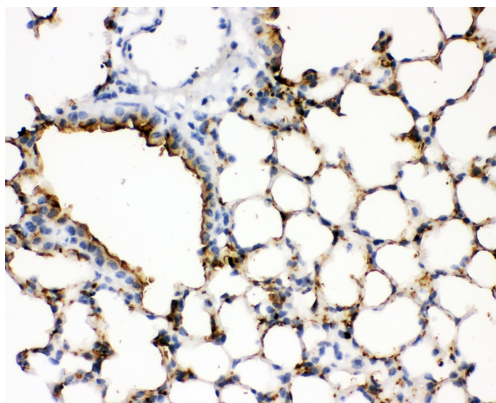
ARG59546 anti-SFTPA1 antibody IHC-P image

Immunohistochemistry: Paraffin-embedded Rat lung tissues. Antigen Retrieval: Heat mediation was performed in Citrate buffer (pH 6.0, epitope retrieval solution) for 20 min. The tissue section was blocked with 10% goat serum. The tissue section was then stained with ARG59546 anti-SFTPA1 antibody at 1 µg/ml, overnight at 4°C.



ARG59546 anti-SFTPA1 antibody WB image

Western blot: 50 µg of samples under reducing conditions. Mouse lung lysates (Lane 1, 2) and Rat lung lysates (Lane 3, 4) stained with ARG59546 anti-SFTPA1 antibody at 0.5 µg/ml, overnight at 4°C.



ARG59546 anti-SFTP1 antibody IHC-P image

Immunohistochemistry: Paraffin-embedded Mouse lung tissues.
Antigen Retrieval: Heat mediation was performed in Citrate buffer (pH 6.0, epitope retrieval solution) for 20 min. The tissue section was blocked with 10% goat serum. The tissue section was then stained with ARG59546 anti-SFTP1 antibody at 1 µg/ml, overnight at 4°C.