

ARG59748 anti-IL27RA / WSX1 antibody

Package: 50 µg
Store at: -20°C

Summary

Product Description	Rabbit Polyclonal antibody recognizes IL27RA / WSX1
Tested Reactivity	Hu
Tested Application	ICC/IF, IHC-P, WB
Host	Rabbit
Clonality	Polyclonal
Isotype	IgG
Target Name	IL27RA / WSX1
Species	Human
Immunogen	Synthetic peptide within the last 50 amino acids of Human IL27RA.
Conjugation	Un-conjugated
Alternate Names	IL27R; CRL1; Cytokine receptor-like 1; zcytor1; IL-27R subunit alpha; TCCR; IL-27R-alpha; Interleukin-27 receptor subunit alpha; ZcytoR1; Type I T-cell cytokine receptor; IL-27 receptor subunit alpha; WSX1; IL-27RA; Cytokine receptor WSX-1

Application Instructions

Application table	Application	Dilution
	ICC/IF	20 µg/ml
	IHC-P	5 µg/ml
	WB	1 µg/ml
Application Note	* The dilutions indicate recommended starting dilutions and the optimal dilutions or concentrations should be determined by the scientist.	
Positive Control	Human spleen	

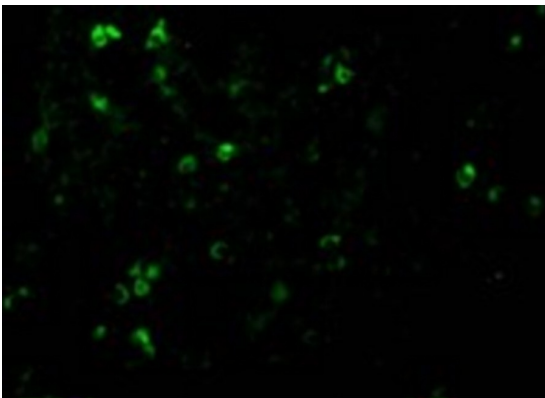
Properties

Form	Liquid
Purification	Affinity purification with immunogen.
Buffer	PBS and 0.02% Sodium azide
Preservative	0.02% Sodium azide
Storage instruction	For continuous use, store undiluted antibody at 2-8°C for up to a week. For long-term storage, aliquot and store at -20°C or below. Storage in frost free freezers is not recommended. Avoid repeated freeze/thaw cycles. Suggest spin the vial prior to opening. The antibody solution should be gently mixed before use.
Note	For laboratory research only, not for drug, diagnostic or other use.

Bioinformation

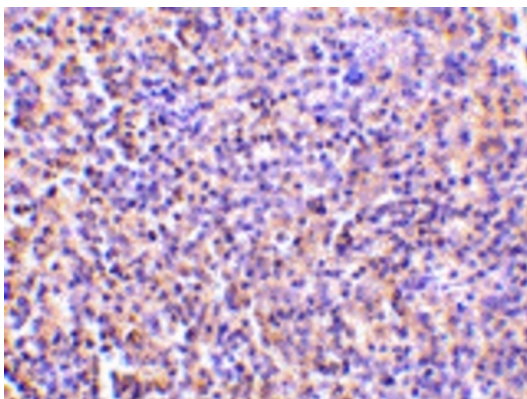
Gene Symbol	IL27RA
Gene Full Name	interleukin 27 receptor, alpha
Background	In mice, CD4+ helper T-cells differentiate into type 1 (Th1) cells, which are critical for cell-mediated immunity, predominantly under the influence of IL12. Also, IL4 influences their differentiation into type 2 (Th2) cells, which are critical for most antibody responses. Mice deficient in these cytokines, their receptors, or associated transcription factors have impaired, but are not absent of, Th1 or Th2 immune responses. This gene encodes a protein which is similar to the mouse T-cell cytokine receptor Tccr at the amino acid level, and is predicted to be a glycosylated transmembrane protein. [provided by RefSeq, Jul 2008]
Function	Receptor for IL27. Requires IL6ST/gp130 to mediate signal transduction in response to IL27. This signaling system acts through STAT3 and STAT1. Involved in the regulation of Th1-type immune responses. Also appears to be involved in innate defense mechanisms. [UniProt]
Calculated Mw	69 kDa
Cellular Localization	Membrane; Single-pass type I membrane protein. [UniProt]

Images



ARG59748 anti-IL27RA / WSX1 antibody ICC/IF image

Immunofluorescence: Human spleen cells stained with ARG59748 anti-IL27RA / WSX1 antibody at 20 µg/ml dilution.

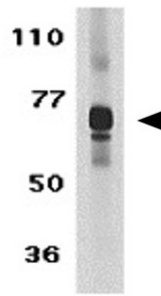


ARG59748 anti-IL27RA / WSX1 antibody IHC-P image

Immunohistochemistry: Paraffin-embedded Human spleen stained with ARG59748 anti-IL27RA / WSX1 antibody at 5 µg/ml dilution.

ARG59748 anti-IL27RA / WSX1 antibody WB image

Human spleen



Western blot: Human spleen lysate stained with ARG59748 anti-IL27RA / WSX1 antibody at 1 µg/ml dilution.