

ARG59879 anti-CD26 / DPP4 antibody

Package: 100 µl
Store at: -20°C

Summary

Product Description	Rabbit Polyclonal antibody recognizes CD26 / DPP4
Tested Reactivity	Hu, Ms, Rat
Tested Application	IHC-P, WB
Host	Rabbit
Clonality	Polyclonal
Isotype	IgG
Target Name	CD26 / DPP4
Species	Human
Immunogen	Recombinant fusion protein corresponding to aa. 29-280 of Human CD26 / DPP4 (NP_001926.2).
Conjugation	Un-conjugated
Alternate Names	T-cell activation antigen CD26; ADCP2; ADCP-2; DPP IV; Adenosine deaminase complexing protein 2; CD26; EC 3.4.14.5; ADABP; Dipeptidyl peptidase IV soluble form; Dipeptidyl peptidase IV; Dipeptidyl peptidase 4; Dipeptidyl peptidase IV membrane form; TP103; DPPIV; CD antigen CD26

Application Instructions

Application table	Application	Dilution
	IHC-P	1:50 - 1:200
	WB	1:500 - 1:2000
Application Note	* The dilutions indicate recommended starting dilutions and the optimal dilutions or concentrations should be determined by the scientist.	
Positive Control	Rat kidney, Mouse liver and HeLa	
Observed Size	110 kDa	

Properties

Form	Liquid
Purification	Affinity purified.
Buffer	PBS (pH 7.3), 0.02% Sodium azide and 50% Glycerol.
Preservative	0.02% Sodium azide
Stabilizer	50% Glycerol
Storage instruction	For continuous use, store undiluted antibody at 2-8°C for up to a week. For long-term storage, aliquot and store at -20°C. Storage in frost free freezers is not recommended. Avoid repeated freeze/thaw cycles. Suggest spin the vial prior to opening. The antibody solution should be gently mixed before use.

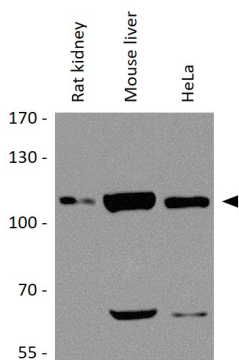
Note

For laboratory research only, not for drug, diagnostic or other use.

Bioinformation

Gene Symbol	DPP4
Gene Full Name	dipeptidyl-peptidase 4
Background	The protein encoded by this gene is identical to adenosine deaminase complexing protein-2, and to the T-cell activation antigen CD26. It is an intrinsic membrane glycoprotein and a serine exopeptidase that cleaves X-proline dipeptides from the N-terminus of polypeptides. [provided by RefSeq, Jul 2008]
Function	Cell surface glycoprotein receptor involved in the costimulatory signal essential for T-cell receptor (TCR)-mediated T-cell activation. Acts as a positive regulator of T-cell coactivation, by binding at least ADA, CAV1, IGF2R, and PTPRC. Its binding to CAV1 and CARD11 induces T-cell proliferation and NF-kappa-B activation in a T-cell receptor/CD3-dependent manner. Its interaction with ADA also regulates lymphocyte-epithelial cell adhesion. In association with FAP is involved in the pericellular proteolysis of the extracellular matrix (ECM), the migration and invasion of endothelial cells into the ECM. May be involved in the promotion of lymphatic endothelial cells adhesion, migration and tube formation. When overexpressed, enhanced cell proliferation, a process inhibited by GPC3. Acts also as a serine exopeptidase with a dipeptidyl peptidase activity that regulates various physiological processes by cleaving peptides in the circulation, including many chemokines, mitogenic growth factors, neuropeptides and peptide hormones. Removes N-terminal dipeptides sequentially from polypeptides having unsubstituted N-termini provided that the penultimate residue is proline. [UniProt]
Calculated Mw	88 kDa
PTM	The soluble form (Dipeptidyl peptidase 4 soluble form also named SDPP) derives from the membrane form (Dipeptidyl peptidase 4 membrane form also named MDPP) by proteolytic processing. N- and O-Glycosylated. Phosphorylated. Mannose 6-phosphate residues in the carbohydrate moiety are necessary for interaction with IGF2R in activated T-cells. Mannose 6-phosphorylation is induced during T-cell activation. [UniProt]
Cellular Localization	Secreted, Cell membrane, Single-pass type II membrane protein, Apical cell membrane, Cell projection, invadopodium membrane, lamellipodium membrane, Cell junction, Membrane raft. [UniProt]

Images



ARG59879 anti-CD26 / DPP4 antibody WB image

Western blot: 25 ug of Rat kidney, Mouse liver and HeLa cell lysates stained with ARG59879 anti-CD26 / DPP4 antibody at 1:1000 dilution.