

ARG62757
anti-CD18 / LFA1 beta antibody [M18 / 2]Package: 100 µg
Store at: -20°C

Summary

Product Description	Rat Monoclonal antibody [M18/2] recognizes CD18 / LFA1 beta
Tested Reactivity	Ms
Species Does Not React With	Dog
Tested Application	FACS, FuncSt, IHC-Fr, IHC-P, IP, WB
Specificity	The clone M18/2 recognizes CD18 antigen (integrin beta2 subunit; beta2 integrin), a 95 kDa type I transmembrane protein expressed on all leukocytes.
Host	Rat
Clonality	Monoclonal
Clone	M18/2
Isotype	IgG2a
Target Name	CD18 / LFA1 beta
Species	Mouse
Immunogen	Murine cytotoxic T cell glycoproteins
Conjugation	Un-conjugated
Alternate Names	MF17; LAD; CD antigen CD18; MFI7; MAC-1; Cell surface adhesion glycoproteins LFA-1/CR3/p150,95 subunit beta; LCAMB; Integrin beta-2; Complement receptor C3 subunit beta; LFA-1; CD18

Application Instructions

Application table	Application	Dilution
	FACS	1 µg/ml
	FuncSt	Assay-dependent
	IHC-Fr	Assay-dependent
	IHC-P	Assay-dependent
	IP	Assay-dependent
	WB	Assay-dependent
Application Note	Functional studies: Blocking or stimulation. * The dilutions indicate recommended starting dilutions and the optimal dilutions or concentrations should be determined by the scientist.	

Properties

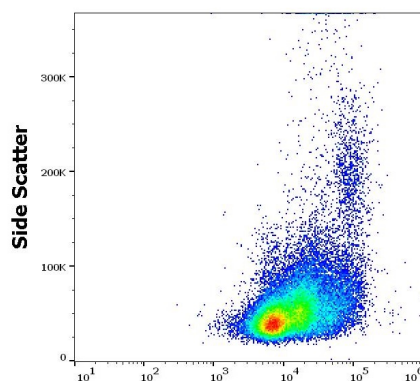
Form	Liquid
Purification	Purified by protein A

Purity	> 95% (by SDS-PAGE)
Buffer	PBS (pH 7.4) and 15 mM Sodium azide
Preservative	15 mM Sodium azide
Concentration	1 mg/ml
Storage instruction	For continuous use, store undiluted antibody at 2-8°C for up to a week. For long-term storage, aliquot and store at -20°C or below. Storage in frost free freezers is not recommended. Avoid repeated freeze/thaw cycles. Suggest spin the vial prior to opening. The antibody solution should be gently mixed before use.
Note	For laboratory research only, not for drug, diagnostic or other use.

Bioinformation

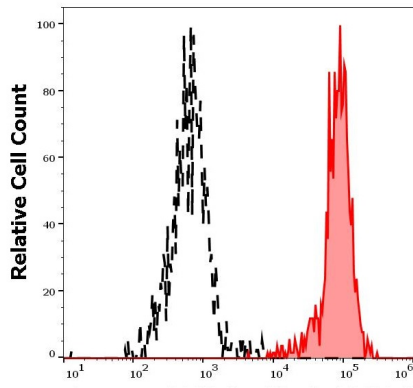
Database links	GeneID: 16414 Mouse Swiss-port # P11835 Mouse
Gene Symbol	Itgb2
Gene Full Name	integrin beta 2
Background	CD18, integrin beta2 subunit, forms heterodimers with four types of CD11 molecule to constitute leukocyte (beta2) integrins: alphaLbeta2 (CD11a/CD18, LFA-1), alphaMbeta2 (CD11b/CD18, Mac-1, CR3), alphaXbeta2 (CD11c/CD18) and alphaDbeta2 (CD11d/CD18). In most cases, the response mediated by the integrin is a composite of the functions of its individual subunits. These integrins are essential for proper leukocyte migration, mediating intercellular contacts.
Function	Integrin alpha-L/beta-2 is a receptor for ICAM1, ICAM2, ICAM3 and ICAM4. Integrins alpha-M/beta-2 and alpha-X/beta-2 are receptors for the iC3b fragment of the third complement component and for fibrinogen. Integrin alpha-X/beta-2 recognizes the sequence G-P-R in fibrinogen alpha-chain. Integrin alpha-M/beta-2 recognizes P1 and P2 peptides of fibrinogen gamma chain. Integrin alpha-M/beta-2 is also a receptor for factor X. Integrin alpha-D/beta-2 is a receptor for ICAM3 and VCAM1. Triggers neutrophil transmigration during lung injury through PTK2B/PYK2-mediated activation. [UniProt]
Research Area	Developmental Biology antibody; Immune System antibody; Signaling Transduction antibody
Calculated Mw	85 kDa
PTM	Both Ser-745 and Ser-756 become phosphorylated when T-cells are exposed to phorbol esters (PubMed:11700305). Phosphorylation on Thr-758 (but not on Ser-756) allows interaction with 14-3-3 proteins (PubMed:11700305, PubMed:16301335).

Images



ARG62757 anti-CD18 / LFA1 beta antibody [M18 / 2] FACS image

Flow Cytometry: Murine splenocytes stained with ARG62757 anti-CD18 / LFA1 beta antibody [M18 / 2] at 16 µg/ml dilution, followed by APC-conjugated Donkey anti-Rat antibody.



ARG62757 anti-CD18 / LFA1 beta antibody [M18 / 2] FACS image

Flow Cytometry: Separation of unstained (black-dashed) and stained (red-filled) murine myeloid cells from murine splenocyte suspension. Cells were stained with ARG62757 anti-CD18 / LFA1 beta antibody [M18 / 2] at 16 µg/ml dilution, followed by APC-conjugated Donkey anti-Rat antibody.