

ARG62811 anti-CD300a + CD300c antibody [MEM-260]

Package: 100 µg
Store at: -20°C

Summary

Product Description	Mouse Monoclonal antibody [MEM-260] recognizes CD300a + CD300c
Tested Reactivity	Hu
Tested Application	FACS, WB
Specificity	The clone MEM-260 reacts with CD300a, a 60 kDa leukocyte transmembrane glycoprotein expressed on human granulocytes, monocytes, neutrophils, NK cells, mast cells and dendritic cells, 25% of circulating T cells and 15% of circulating B cells.
Host	Mouse
Clonality	Monoclonal
Clone	MEM-260
Isotype	IgG1
Target Name	CD300a + CD300c
Species	Human
Immunogen	HPB human acute lymphoid leukemia cell line
Conjugation	Un-conjugated
Alternate Names	CMRF-35-H9; Inhibitory receptor protein 60; NK inhibitory receptor; CMRF35-H; CMRF35H9; CD antigen CD300a; IRC1/IRC2; IGSF12; CMRF35H; IRp60; IgSF12; CMRF35-like molecule 8; CMRF35-H9; CMRF-35H; CD300 antigen-like family member A; CLM-8; IRC1; IRC2; Immunoglobulin superfamily member 12

Application Instructions

Application table	Application	Dilution
	FACS	2 µg/ml
	WB	Assay-dependent
Application Note	WB: Sample preparation: Resuspend approx. 50 mil. cells in 1 ml cold Lysis buffer (1% laurylmaltoside in 20 mM Tris/Cl, 100 mM NaCl pH 8.2, 50 mM NaF including Protease inhibitor Cocktail). Incubate 60 min on ice. Centrifuge to remove cell debris. Mix lysate with non-reducing SDS-PAGE sample buffer. Application note: Non-reducing condition. * The dilutions indicate recommended starting dilutions and the optimal dilutions or concentrations should be determined by the scientist.	
Positive Control	WB: Positive control: HPB. Negative control: Jurkat and Raji.	

Properties

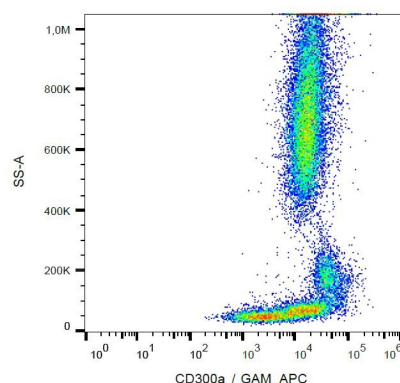
Form	Liquid
Purification	Purified from hybridoma culture supernatant by protein-A affinity chromatography.

Purity	> 95% (by SDS-PAGE)
Buffer	PBS (pH 7.4) and 15 mM Sodium azide
Preservative	15 mM Sodium azide
Concentration	1 mg/ml
Storage instruction	For continuous use, store undiluted antibody at 2-8°C for up to a week. For long-term storage, aliquot and store at -20°C or below. Storage in frost free freezers is not recommended. Avoid repeated freeze/thaw cycles. Suggest spin the vial prior to opening. The antibody solution should be gently mixed before use.
Note	For laboratory research only, not for drug, diagnostic or other use.

Bioinformation

Database links	GeneID: 11314 Human Swiss-port # Q9UGN4 Human
Gene Symbol	CD300A
Gene Full Name	CD300a molecule
Background	CD300a (CMRF-35H, IRp60) is a non-MHC-specific inhibitory receptor of immunoglobulin superfamily, which contains three immunoreceptor tyrosine-based inhibitory motifs (ITIMs) that associate with SH2-containing phosphatases SHP-1 and SHP-2. CD300a is expressed on many cell types including T cells, NK cells, neutrophils, eosinophils or mast cells. Its triggering inhibits activating signals such as those of IL5, GM-CSF or eotaxin, as well as supresses mast cell degranulation or NK cell cytotoxic activity.
Function	Inhibitory receptor which may contribute to the down-regulation of cytolytic activity in natural killer (NK) cells, and to the down-regulation of mast cell degranulation. [UniProt]
Research Area	Immune System antibody
Calculated Mw	33 kDa
PTM	Phosphorylated on tyrosine. N-glycosylated.

Images



ARG62811 anti-CD300a + CD300c antibody [MEM-260] FACS image

Flow Cytometry: Human peripheral blood cells stained with ARG62811 anti-CD300a + CD300c antibody [MEM-260], followed by incubation with APC labelled Goat anti-Mouse secondary antibody.