

## ARG62839 anti-CD40 antibody [HI40a] (FITC)

Package: 100 tests, 50 tests  
Store at: 4°C

### Summary

Product Description	FITC-conjugated Mouse Monoclonal antibody [HI40a] recognizes CD40
Tested Reactivity	Hu
Tested Application	FACS
Specificity	The clone HI40a recognizes CD40 (BP50), a 48 kDa type I single chain transmembrane glycoprotein expressed on normal and neoplastic B cells, but not on terminally differentiated plasma cells. CD40 antigen is also present on Hodgkin's and Reed-Sternberg cells, follicular dendritic cells, some macrophages, basal epithelial cells and endothelial cells.
Host	Mouse
Clonality	Monoclonal
Clone	HI40a
Isotype	IgG1
Target Name	CD40
Species	Human
Immunogen	Human CD40a
Conjugation	FITC
Alternate Names	CDw40; CD antigen CD40; Tumor necrosis factor receptor superfamily member 5; Bp50; CD40L receptor; CDW40; TNFRSF5; p50; B-cell surface antigen CD40

### Application Instructions

Application table	Application	Dilution
	FACS	20 µl / 10 <sup>6</sup> cells
Application Note	* The dilutions indicate recommended starting dilutions and the optimal dilutions or concentrations should be determined by the scientist.	

### Properties

Form	Liquid
Purification Note	The purified antibody is conjugated with Fluorescein isothiocyanate (FITC) under optimum conditions. The reagent is free of unconjugated FITC and adjusted for direct use. No reconstitution is necessary.
Buffer	PBS, 15 mM Sodium azide and 0.2% (w/v) high-grade protease free BSA
Preservative	15 mM Sodium azide
Stabilizer	0.2% (w/v) high-grade protease free BSA
Storage instruction	Aliquot and store in the dark at 2-8°C. Keep protected from prolonged exposure to light. Avoid repeated freeze/thaw cycles. Suggest spin the vial prior to opening. The antibody solution should be gently mixed before use.

Note

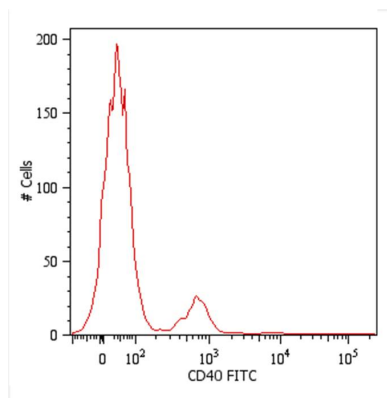
For laboratory research only, not for drug, diagnostic or other use.

## Bioinformation

---

Database links	<a href="#">GeneID: 958 Human</a> <a href="#">Swiss-port # P25942 Human</a>
Gene Symbol	CD40
Gene Full Name	CD40 molecule, TNF receptor superfamily member 5
Background	CD40 is a costimulatory molecule of the TNF receptor superfamily and is expressed on many cell types, such as B cells, monocytes/macrophages, dendritic cells, endothelial cells, fibroblasts or vascular smooth muscle cells. Interaction of CD40 and its ligand CD154 (CD40L) is required for the generation of antibody responses to T-dependent antigens as well as for the development of germinal centers and memory B cells. In monocytes/macrophages CD40 engagement induces production of pro-inflammatory cytokines and chemokines. CD40-CD154 interactions are also critical for development of CD4 T cell-dependent effector functions. CD40 links innate and adaptive immune responses to bacterial stimuli and serves as an important regulator affecting functions of other costimulatory molecules.
Function	Receptor for TNFSF5/CD40LG. Transduces TRAF6- and MAP3K8-mediated signals that activate ERK in macrophages and B cells, leading to induction of immunoglobulin secretion. [UniProt]
Highlight	Related Antibody Duos and Panels: <a href="#">ARG30306 Pro-B Cell Marker Antibody panel (CD19, CD34, CD38, CD40, CD45) (FACS)</a> <a href="#">ARG30307 Pre-B Cell Marker Antibody Panel (CD19, CD25, CD38, CD40, CD45) (FACS)</a> Related products: <a href="#">CD40 antibodies</a> ; <a href="#">CD40 ELISA Kits</a> ; <a href="#">CD40 Duos / Panels</a> ; <a href="#">Anti-Mouse IgG secondary antibodies</a> ;
Research Area	Cell Biology and Cellular Response antibody; Developmental Biology antibody; Immune System antibody; Pro-B Cell Marker antibody; Pre-B Cell Marker antibody
Calculated Mw	31 kDa

## Images



ARG62839 anti-CD40 antibody [HI40a] (FITC) FACS image

Flow Cytometry: Human peripheral blood cells stained with ARG62839 anti-CD40 antibody [HI40a] (FITC). Cells in the lymphocyte gate were used for analysis.