

## ARG62873 anti-CD48 antibody [MEM-102] (Biotin)

Package: 100 µg  
Store at: 4°C

### Summary

Product Description	Biotin-conjugated Mouse Monoclonal antibody [MEM-102] recognizes CD48
Tested Reactivity	Hu, NHuPrm
Tested Application	FACS
Specificity	The clone MEM-102 reacts with CD48 antigen (Blast-1), a 40-47 kDa GPI-anchored membrane protein (immunoglobulin supergene family) widely expressed on hematopoietic cells; it is negative on granulocytes, platelets and erythrocytes. HLDA V; WS Code AS S014
Host	Mouse
Clonality	Monoclonal
Clone	MEM-102
Isotype	IgG1
Target Name	CD48
Species	Human
Immunogen	Raji human Burkitt's lymphoma cell line
Conjugation	Biotin
Alternate Names	Leukocyte antigen MEM-102; B-lymphocyte activation marker BLAST-1; CD48 antigen; BCM1 surface antigen; CD antigen CD48; TCT.1; BLAST1; BCM1; MEM-102; mCD48; Signaling lymphocytic activation molecule 2; BLAST; hCD48; SLAMF2; SLAM family member 2

### Application Instructions

Application table	<table><thead><tr><th>Application</th><th>Dilution</th></tr></thead><tbody><tr><td>FACS</td><td>1 - 2 µg/ml</td></tr></tbody></table>	Application	Dilution	FACS	1 - 2 µg/ml
Application	Dilution				
FACS	1 - 2 µg/ml				
Application Note	* The dilutions indicate recommended starting dilutions and the optimal dilutions or concentrations should be determined by the scientist.				

### Properties

Form	Liquid
Purification Note	The purified antibody is conjugated with Biotin-LC-NHS under optimum conditions. The reagent is free of unconjugated biotin.
Buffer	PBS (pH 7.4) and 15 mM Sodium azide
Preservative	15 mM Sodium azide
Concentration	1 mg/ml
Storage instruction	Aliquot and store in the dark at 2-8°C. Keep protected from prolonged exposure to light. Avoid repeated freeze/thaw cycles. Suggest spin the vial prior to opening. The antibody solution should be

gently mixed before use.

Note

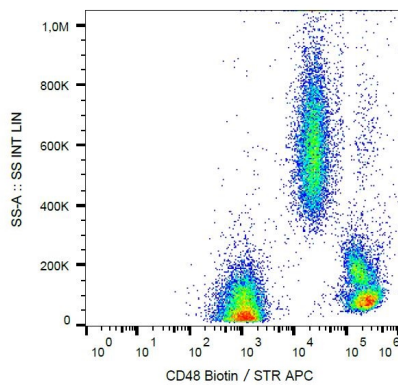
For laboratory research only, not for drug, diagnostic or other use.

## Bioinformation

---

Database links	<a href="#">GeneID: 962 Human</a> <a href="#">Swiss-port # P09326 Human</a>
Gene Symbol	CD48
Gene Full Name	CD48 molecule
Background	CD48 (Blast-1) belongs to the CD2 subset of the Ig superfamily, which includes CD2, CD2F-10, CD58, CD84, CD150, CD229, CD244 and others. These molecules bind to the same or another members of their family, thus mediate homotypic or heterotypic adhesion. CD48 is a GPI-anchored protein broadly expressed on hematopoietic cells and serves as a high affinity ligand for 2B4 and low affinity ligand for CD2. 2B4-CD48 interaction among NK cells and NK-T cells regulates cell proliferation. Signaling through CD48 results in eosinophil activation and CD48 expression is increased in several infectious diseases.
Function	Ligand for CD2. Might facilitate interaction between activated lymphocytes. Probably involved in regulating T-cell activation. [UniProt]
Research Area	Immune System antibody
Calculated Mw	28 kDa

## Images



ARG62873 anti-CD48 antibody [MEM-102] (Biotin) FACS image

Flow Cytometry: Human peripheral blood stained with ARG62873 anti-CD48 antibody [MEM-102] (Biotin), followed by Streptavidin (APC).