

ARG62875 anti-CD48 antibody [MEM-102] (FITC)

Package: 100 tests
Store at: 4°C

Summary

Product Description	FITC-conjugated Mouse Monoclonal antibody [MEM-102] recognizes CD48
Tested Reactivity	Hu, NHuPrm
Tested Application	FACS
Specificity	The clone MEM-102 reacts with CD48 antigen (Blast-1), a 40-47 kDa GPI-anchored membrane protein (immunoglobulin supergene family) widely expressed on hematopoietic cells; it is negative on granulocytes, platelets and erythrocytes. HLDA V; WS Code AS S014
Host	Mouse
Clonality	Monoclonal
Clone	MEM-102
Isotype	IgG1
Target Name	CD48
Species	Human
Immunogen	Raji human Burkitt's lymphoma cell line
Conjugation	FITC
Alternate Names	Leukocyte antigen MEM-102; B-lymphocyte activation marker BLAST-1; CD48 antigen; BCM1 surface antigen; CD antigen CD48; TCT.1; BLAST1; BCM1; MEM-102; mCD48; Signaling lymphocytic activation molecule 2; BLAST; hCD48; SLAMF2; SLAM family member 2

Application Instructions

Application table	<table><thead><tr><th>Application</th><th>Dilution</th></tr></thead><tbody><tr><td>FACS</td><td>20 µl / 10⁶ cells</td></tr></tbody></table>	Application	Dilution	FACS	20 µl / 10 ⁶ cells
Application	Dilution				
FACS	20 µl / 10 ⁶ cells				
Application Note	* The dilutions indicate recommended starting dilutions and the optimal dilutions or concentrations should be determined by the scientist.				

Properties

Form	Liquid
Purification Note	The purified antibody is conjugated with Fluorescein isothiocyanate (FITC) under optimum conditions. The reagent is free of unconjugated FITC and adjusted for direct use. No reconstitution is necessary.
Buffer	PBS, 15 mM Sodium azide and 0.2% (w/v) high-grade protease free BSA
Preservative	15 mM Sodium azide
Stabilizer	0.2% (w/v) high-grade protease free BSA
Storage instruction	Aliquot and store in the dark at 2-8°C. Keep protected from prolonged exposure to light. Avoid repeated freeze/thaw cycles. Suggest spin the vial prior to opening. The antibody solution should be

gently mixed before use.

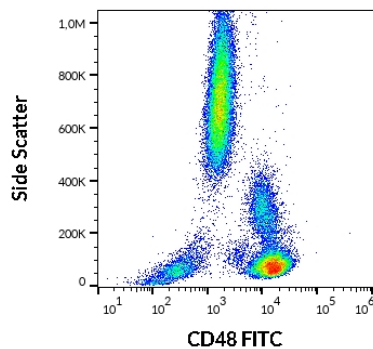
Note

For laboratory research only, not for drug, diagnostic or other use.

Bioinformation

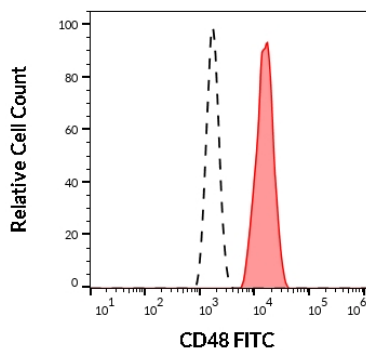
Database links	GeneID: 962 Human Swiss-port # P09326 Human
Gene Symbol	CD48
Gene Full Name	CD48 molecule
Background	CD48 (Blast-1) belongs to the CD2 subset of the Ig superfamily, which includes CD2, CD2F-10, CD58, CD84, CD150, CD229, CD244 and others. These molecules bind to the same or another members of their family, thus mediate homotypic or heterotypic adhesion. CD48 is a GPI-anchored protein broadly expressed on hematopoietic cells and serves as a high affinity ligand for 2B4 and low affinity ligand for CD2. 2B4-CD48 interaction among NK cells and NK-T cells regulates cell proliferation. Signaling through CD48 results in eosinophil activation and CD48 expression is increased in several infectious diseases.
Function	Ligand for CD2. Might facilitate interaction between activated lymphocytes. Probably involved in regulating T-cell activation. [UniProt]
Research Area	Immune System antibody
Calculated Mw	28 kDa

Images



ARG62875 anti-CD48 antibody [MEM-102] (FITC) FACS image

Flow Cytometry: Human peripheral whole blood stained with ARG62875 anti-CD48 antibody [MEM-102] (FITC) (20 µl reagent / 100 µl of peripheral whole blood).



ARG62875 anti-CD48 antibody [MEM-102] (FITC) FACS image

Flow Cytometry: Separation of Human CD48 positive Lymphocytes (red) from Human CD48 negative Neutrophil Granulocytes (black-dashed). Human peripheral whole blood stained with ARG62875 anti-CD48 antibody [MEM-102] (FITC) (20 µl reagent / 100 µl of peripheral whole blood).