

ARG63639 anti-SORL1 / SorLA antibody

Package: 100 µg
Store at: -20°C

Summary

Product Description	Goat Polyclonal antibody recognizes SORL1 / SorLA
Tested Reactivity	Hu
Predict Reactivity	Ms, Rat, Cow, Dog
Tested Application	ICC/IF
Host	Goat
Clonality	Polyclonal
Isotype	IgG
Target Name	SORL1 / SorLA
Species	Human
Immunogen	C-TGFSDDVPMVIA
Conjugation	Un-conjugated
Alternate Names	SorLA-1; SorLA; LRP9; LR11; C11orf32; SORLA; gp250; Sorting protein-related receptor containing LDLR class A repeats; LDLR relative with 11 ligand-binding repeats; Sortilin-related receptor; Low-density lipoprotein receptor relative with 11 ligand-binding repeats

Application Instructions

Application table	<table><thead><tr><th>Application</th><th>Dilution</th></tr></thead><tbody><tr><td>ICC/IF</td><td>10 µg/ml</td></tr></tbody></table>	Application	Dilution	ICC/IF	10 µg/ml
Application	Dilution				
ICC/IF	10 µg/ml				
Application Note	* The dilutions indicate recommended starting dilutions and the optimal dilutions or concentrations should be determined by the scientist.				

Properties

Form	Liquid
Purification	Purified from goat serum by antigen affinity chromatography.
Buffer	Tris saline (pH 7.3), 0.02% Sodium azide and 0.5% BSA.
Preservative	0.02% Sodium azide
Stabilizer	0.5% BSA
Concentration	0.5 mg/ml
Storage instruction	For continuous use, store undiluted antibody at 2-8°C for up to a week. For long-term storage, aliquot and store at -20°C or below. Storage in frost free freezers is not recommended. Avoid repeated freeze/thaw cycles. Suggest spin the vial prior to opening. The antibody solution should be gently mixed before use.
Note	For laboratory research only, not for drug, diagnostic or other use.

Bioinformation

Database links

[GeneID: 6653 Human](#)

[Swiss-port # Q92673 Human](#)

Background

This gene encodes a mosaic protein that belongs to at least two families: the vacuolar protein sorting 10 (VPS10) domain-containing receptor family, and the low density lipoprotein receptor (LDLR) family. The encoded protein also contains fibronectin type III repeats and an epidermal growth factor repeat. The encoded protein is translated as a preproprotein and likely plays roles in endocytosis and sorting. There may be an association between expression of this locus and Alzheimer's Disease.[provided by RefSeq, Sep 2010]

Research Area

Neuroscience antibody; Signaling Transduction antibody

Calculated Mw

248 kDa

PTM

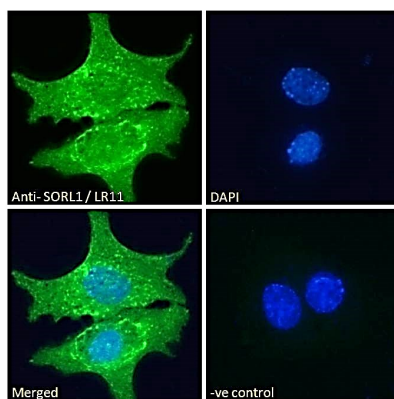
The propeptide removed in the N-terminus may be cleaved by furin or homologous proteases.

Images



ARG63639 anti-SORL1 / SorLA antibody ICC/IF image

Immunofluorescence: Paraformaldehyde fixed A431 cells permeabilized with 0.15% Triton. Cells were stained with ARG63639 anti-SORL1 / SorLA antibody (green) at 10 µg/ml dilution for 1 hour. DAPI (blue) for nuclear staining. Negative control: Unimmunized goat IgG (green) at 10 µg/ml dilution.



ARG63639 anti-SORL1 / SorLA antibody ICC/IF image

Immunofluorescence: Paraformaldehyde fixed HepG2 cells permeabilized with 0.15% Triton. Cells were stained with ARG63639 anti-SORL1 / SorLA antibody (green) at 10 µg/ml dilution for 1 hour. DAPI (blue) for nuclear staining. Negative control: Unimmunized goat IgG (green) at 10 µg/ml dilution.