

## ARG63828 anti-Ghrelin preproprotein antibody

Package: 100 µg  
Store at: -20°C

### Summary

Product Description	Goat Polyclonal antibody recognizes Ghrelin preproprotein
Tested Reactivity	Hu, Rat
Tested Application	IHC-P
Specificity	This antibody is expected to recognise all reported isoforms.
Host	Goat
Clonality	Polyclonal
Isotype	IgG
Target Name	Ghrelin preproprotein
Species	Human
Immunogen	C-QDILWEEAKEAPADK
Conjugation	Un-conjugated
Alternate Names	Motilin-related peptide; Appetite-regulating hormone; Growth hormone secretagogue; Growth hormone-releasing peptide; MTLRP; Ghrelin; Protein M46

### Application Instructions

Application table	Application	Dilution
	IHC-P	2 - 5 µg/ml

**Application Note**  
IHC-P: Antigen Retrieval: Steam tissue section in Citrate buffer (pH 6.0).  
\* The dilutions indicate recommended starting dilutions and the optimal dilutions or concentrations should be determined by the scientist.

### Properties

Form	Liquid
Purification	Purified from goat serum by antigen affinity chromatography.
Buffer	Tris saline (pH 7.3), 0.02% Sodium azide and 0.5% BSA.
Preservative	0.02% Sodium azide
Stabilizer	0.5% BSA
Concentration	0.5 mg/ml
Storage instruction	For continuous use, store undiluted antibody at 2-8°C for up to a week. For long-term storage, aliquot and store at -20°C or below. Storage in frost free freezers is not recommended. Avoid repeated freeze/thaw cycles. Suggest spin the vial prior to opening. The antibody solution should be gently mixed before use.
Note	For laboratory research only, not for drug, diagnostic or other use.

## Bioinformation

### Database links

[GeneID: 51738 Human](#)

[GeneID: 59301 Rat](#)

[Swiss-port # Q9QYH7 Rat](#)

[Swiss-port # Q9UBU3 Human](#)

### Background

This gene encodes ghrelin-obestatin preproprotein, which generates ghrelin and obestatin. Ghrelin is an endogenous ligand for the growth hormone secretagogue receptor and is involved in regulating growth hormone release. Obestatin was initially reported to be an endogenous ligand for the orphan G protein-coupled receptor GPR39 and was involved in satiety and decreased food intake; however, these findings are controversial. Recent reports show that obestatin is involved in inhibiting thirst and anxiety, improving memory, regulating sleep, affecting cell proliferation, and increasing the secretion of pancreatic juice enzymes. Alternative promoters and alternative splicing result in multiple transcript variants, some of which encode different protein isoforms and some of which do not encode a protein but may regulate the ghrelin-obestatin preproprotein expression. In addition, antisense transcripts for this gene have been identified and may also function in regulation of the ghrelin-obestatin preproprotein expression. [provided by RefSeq, Oct 2008]

### Highlight

Related products:

[Anti-Goat IgG secondary antibodies:](#)

Related news:

[Wnt / beta-catenin signaling for gastric fundus specification](#)

### Research Area

Cell Biology and Cellular Response antibody; Metabolism antibody; Neuroscience antibody; Signaling Transduction antibody

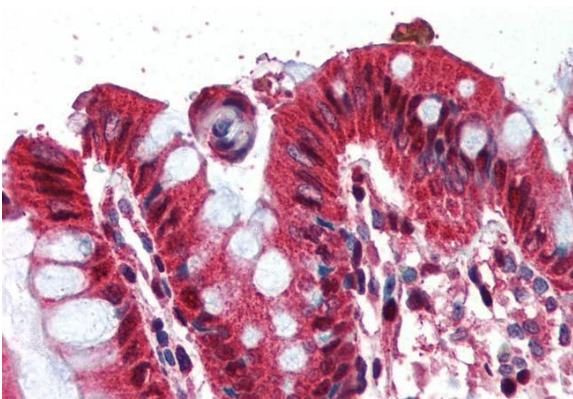
### Calculated Mw

13 kDa

### PTM

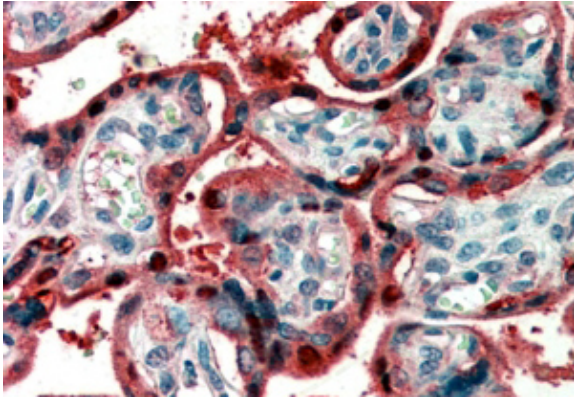
O-octanoylation or O-decanoylation is essential for ghrelin activity. The O-decanoylated forms Ghrelin-27-C10 and Ghrelin-28-C10 differ in the length of the carbon backbone of the carboxylic acid bound to Ser-26. A small fraction of ghrelin, ghrelin-28-C10:1, may be modified with a singly unsaturated carboxylic acid (PubMed:10604470). Amidation of Leu-98 is essential for obestatin activity.

## Images



ARG63828 anti-Ghrelin preproprotein antibody IHC-P image

Immunohistochemistry: Paraffin-embedded Human colon tissue. Antigen Retrieval: Steam tissue section in Citrate buffer (pH 6.0). The tissue section was stained with ARG63828 anti-Ghrelin preproprotein antibody at 2 µg/ml dilution followed by AP-staining.



ARG63828 anti-Ghrelin preproprotein antibody IHC-P image

Immunohistochemistry: paraffin embedded Human Placenta. (Steamed antigen retrieval with citrate buffer pH 6) stained with ARG63828 anti-Ghrelin preproprotein antibody at 2  $\mu$ g/ml dilution followed by AP-staining.